

CLOVERLEAF

Connecting OUR Communities



August - September 2023

**SUMMER
FUN**



**SUMMER
FUN**

Barleymow's

FARM SHOP & RESTAURANT

Saturday 23 July - Sunday 4 September Family Fun Activities & Maize Maze

Open every day: 9.30am - 5pm (last entry 4pm)

- Get lost in the Amazing Maize Maze.
- Climb the great Straw Mountain.
- Bounce on the Trampolines.
- Beat the Ball Games.
- Take a trip on the Quad Barrel Train.
- Pet the Animals.
- Ride-on Tractors, Go Karts, Trikes.
- Free parking.

Contact us for more details and to book your table

Tel: 01460 62130 www.barleymowsfarmshop.co.uk



Half mile west of Chard on the A30

**POST
OFFICE**

The Village Shop & Post Office

Combe St Nicholas



Newspapers and magazines
delivered daily in Combe.

Order yours now!

Wide range of Groceries ●

Confectionery ● Beer & Wine ●

Household products ● Fresh Fruit & Vegetables ●

Local Milk from Gudenham Farm ● Logs & Kindling...

PLUS, Amazon Pick Up and
access to full Post Office and banking facilities!

SUPPORT YOUR LOCAL SHOP



Opening Every Day

Mon-Fri 7.30am to 6.00pm Sat: 7.30am to 5pm Sun 8.00am to 1.00pm

Tel: 01460 62138

Overview

How time flies! It really doesn't seem 5 minutes since I was putting the last magazine together. After the earlier Spring heatwave we seem to be back to generally unsettled conditions - at least the grass appreciates that.

Combe Film Nights have proved to be very popular and there are two more being promoted in this issue - see page 5.

After a gap of four years it's great to be welcoming the return of the Combe St. Nicholas Show. August 5th will see the opening of the 47th show. A lot of things have changed over those years but the organisers hope everyone will come together to make this a bumper event by entering a class or going along to support on the day. And, if you fancy some more outside entertainment you could go along to Yarcombe Terrier Races later on that day.

A small community like ours relies heavily on volunteers to organise clubs, societies, events and opportunities. Some may charge for classes, but they still have to put in a lot of work and commitment to make life interesting and rewarding for others. Here are just a few that might attract your attention:

Singing for Fun - turn to page 5 to find out more

World Circle Dance - lots of information on page 15

Combe Art Group - details on page 25

Coffee Morning at Combe Church - page 6

There's plenty happening in Whitestaunton too. You'll find details of a Summer Concert, Songs of Praise and a Craft Fair on page 17!

On page 22, John Phillips gives us part 2 of his account of the Monmouth Rebellion which led to the Battle of Sedgemoor. He mentions Judge Jefferies, who held courts in Chard - in the upper rooms of the fine building which now houses West Country Meats!

Finally, on page 29 there are invitations to visit The Blackdown Food and Craft Fayre on August 27th and Derek Northfield and Gill Wright, who are opening their ceramics studio at Lucas Corner as part of Somerset Open Studios.

Lesley Cole

Editor

What can I do about climate change in my garden?

However small or large your garden is, there's lots you can do to help combat the causes and effects of climate breakdown. Gardens are great for human health and wellbeing, they can help maintain biodiversity and they can even remove carbon dioxide emissions from the atmosphere. As the impacts of climate change make themselves ever more apparent, the positive impacts of gardens will become ever more important. Here are ways you can maximise the benefits.

Green up your outside space: Trees and plants help tackle climate change by removing carbon dioxide (CO₂) from the atmosphere. They can reduce the risk of flooding by slowing down rainwater runoff.

Plant a diverse range of plants in your garden: Growing a range of different plants in your garden is great for building resilience. If extreme weather such as flooding or drought damages some plants, others will be fine. As weather patterns shift, some insects that depend on particular flowers might suffer, so plant a diverse variety of pollinator friendly plants with different flowering times.

Be water-wise: Water butts are a brilliant solution to some of the problems being created by climate change. They help prevent flooding by reducing the load on drains during rainstorms, and help conserve water during droughts. Look for water butts with a larger than standard capacity to ensure a sufficient water supply over the summer. Select plants and design strategies better suited to your local conditions.

Avoid peat-based composts: Peatlands store huge amounts of carbon. Harvesting the peat to use for composts is an environmental disaster, both for the biodiversity of the area which is harvested and on a global climate scale. Look, ask for and use peat-free composts.

Compost your garden and kitchen waste: Compost as much garden and kitchen waste as you can. Adding home-made compost to your soil improves its structure and provides excellent nutrients for the garden.

Reduce - Reuse - Recycle - Reinvest: Adopt the 4R's. Reduce – the use of resources in your garden wherever possible, Reuse – household materials and seasonal items year on year, Recycle – your garden waste, plastic, glass and metals and Reinvest – help stimulate demand for recycled products by buying recycled items.

Village Hall

Our Hallmark inspection took place on 13th June and we're delighted to report that we passed again with flying colours. As well as approval of our management, record keeping and financial controls, the inspectors commented on how clean and tidy the hall is and on the good working relations with the many groups that use it. They concluded that "this is a popular and attractive Village Hall, well managed by a capable, enthusiastic and forward-looking committee, and we have no hesitation in recommending renewal of its Hallmark 1 status".

The roof work is still on schedule to start at the end of July. Donations towards the cost if this have now reached £4503.84. Many thanks to all who have contributed.

Please see separate articles about the forthcoming films and the recent concert success.

Village Hall Committee

Sunday School Wood

Recent activity has principally consisted of general mowing and strimming. This includes two or three graves that had become overgrown, and Green Lane, to maintain accessibility.

Brian's patch has not been the riot of colour we had



Bird's foot trefoil

hoped for, but there has been a lot of toadflax, and bird's foot trefoil is apparent. We also have poppies, and some small blue flowers a bit like forget-me-nots, so maybe we are being a bit impatient.



Toad flax

By the time you read this, there will be a new seat in memory of Audrey and Ken Miller. This will replace the old one which had become unsafe to sit on, despite repair work having been carried out by team members. Eventually, wood rot gained the upper hand, so it is great to see this new one. It will be an excellent addition to the Wood. A plaque has also been added to the other recent seat in memory of Ken and Doris Wheadon.

Frank Warriner

BOB DUNN

CHARDSTOCK JOINERY

Quality Purpose Made Joinery

Windows

Stairs

Doors

- Over 45 years experience
- Supply or supply & install
- Listed building work

Tel: 07875 067092

Email: chardstockjoinery@hotmail.co.uk

Alexander

THE GRATE



01460 613220

Chimney Sweep

APICS member & HETAS registered.

Fully Insured, Certificate Issued.

Friendly, Clean, Professional Service:
Brush & Vacuum; Power Sweeping.

www.gratechimneysweep.co.uk

Email: a.gratesweep@gmail.com

1 Old Orchard, Forton, Chard, TA20 2LX



WILLIAM YOUNG

PIANOS

- Tuning
- Repairs
- Restoration
- Cabinet work
- French polishing
- Sales

From a sticky note to a full rebuild

Over 20 years' experience inc
Steinway, Bluthner, Bechstein

Tel: 01884 906313

Tuning: 07714 993171

hq@wypianos.co.uk

www.wypianos.co.uk

Oven Spa

South Somerset's independent,
environmentally friendly, oven
cleaning service.

No fumes, no fuss, just a super shiny
oven that looks as good as new.

£55 for a single oven, £65 for a
double. Hobs & extractors from £10.

See ovenspa.com or call Mick
George on:

07843 99 88 96

DIRTBUSTERS
OVEN CLEANING NETWORK

Singing for Fun

Led by music tutors:
Jane Harris and Rachael Forsyth
www.rachaelforsyth.co.uk

Sunday 17 September 2023

10am to 12 noon with a break for tea and coffee
at Combe St Nicholas Village Hall

A relaxed, friendly and accessible workshop for people 18+ and for all ability levels who either enjoy group harmony singing or would like to learn. Singing songs from a variety of cultures and styles by ear, so there is no need to read music.

We will just be having fun with our voices!

For further information and to book tickets contact
Jane Harris: janeharris334@gmail.com or 01460 239113

Early Bird Tickets (Book before the workshop): £10.00
Pay On the Day: £12.00 (Cash only)

Film Nights for June & July

August 4th: A Man Called Otto.

The latest Tom Hanks film in which he plays Otto; a grump who's given up on life following the loss of his wife and wants to end it all. When a young family moves in nearby, he meets his match in quick-witted Marisol, leading to a friendship that will turn his world around.



September 1st: Death At A Funeral

Directed by Frank Oz, chaos ensues in this black comedy when a man tries to expose a dark secret regarding a recently deceased patriarch of a dysfunctional British family.

Our Village Hall Film Shows are not to be missed

Doors open at 6:30pm with ice-creams on sale and the film starts at 7pm.

It Started With A Bang!

Picture the scene, it's a Saturday evening in early June, it's a hot sultry night, the village hall is almost bursting at the seams with a capacity crowd, the audience is seated, but not quite sure what to expect!

On stage is the Ilminster Ukulele Club, their leader starts to explain that we might be playing some Brahms or Chopin, perhaps some light jazz, when someone shouts out 1 2 3 4 GO!

And the Ukuleles spring into action with a loud rendition of the 60's group The Monkeys and their song, I Thought Love Was All About Fairy Tales. BANG, BANG, BANG, go the groups feet and a load "OI" ring's out!

The audience is taken aghast, this is not George Formby leaning on a lamp-post as so many of us suspected, oh no this is your modern Ukulele Club sound, and that is how the night started, the audience clapped and cheered and the songs kept on coming. After the interval we had The Merchant Men, 5 young good-looking lads who could certainly sing a sea shanty or two and charm the ladies in the audience as well, and so the night went on, brilliant, just brilliant.

£734 was raised that night for the VH Roof Appeal, a great sum from a great evening. Since then, we have lots of requests asking if we will be doing it again, I think it's safe to say "YES". We will be doing it again, and sometime later next year. A big thank you to all who worked so hard to make this great evening happen, it simply would not have been possible without your help and support, you know who you are, so a very big, **THANK YOU!**

Ian Croucher.

St Nicholas Church

Coffee Mornings

Saturday 12th August 2023

& Saturday 9th September 2023

10 am – 12.00 noon

Table top sale, produce, raffle

Come have some cake, a cuppa, and pick up a bargain!

Everyone welcome





YARCOMBE TERRIER RACING

SATURDAY 5TH AUGUST 2023

Gates Open 4.00pm | First Race 4.30pm

Plus bar, BBQ, local crafts, dog agility and plenty of games for the family.

ENTRY £5

(ACCOMPANIED CHILDREN FREE)

PLEASE BRING CHANGE OR CASH, LIMITED CARD MACHINES ON SITE

Dog entries to yarcombe.racing@gmail.com

MAIN SPONSOR



Free parking at EX14 9BN, signposted
from the A30 in Yarcombe.

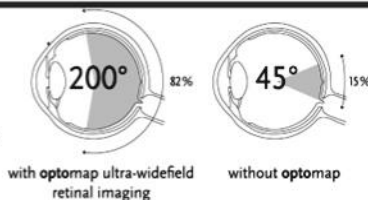


ROBERT FRITH OPTOMETRISTS

Experienced optometrists delivering outstanding eye care
in a relaxed and friendly environment.

A wide range of products and services including tailor-made
spectacle frames and lenses, emergency eye care and the
latest in 3D eye scanning technology.

Introducing the New **optomap**
ultra-wide field retinal imaging
technology, giving us a comprehensive
view of your eye health



18 Fore Street, Chard

01460 67771

We are happy to collect any unwanted glasses for us to use in our eye testing work in Kenya.

HOBBS **Electrical Contractors Ltd**



*Commercial * Domestic * Industrial*

Electrical Installation
Rewires, new builds & renovations
Maintenance & Repairs
Inspection & Testing, Portable Appliance Testing

01460 712320

Est 1987

Kathy Arnold Therapies
REFLEXOLOGY, INDIAN HEAD
MASSAGE, AROMATHERAPY
MASSAGE, HOPI EAR CANDLES

Now available in Buckland St. Mary
Please call Kathy on 01460 234693
for information or appointment or visit
www.kathyarnoldtherapies.co.uk



TGF **PLASTERING**

Call us on **07717 413239**

Quick, Clean and Professional Service

All Aspects Undertaken



Find us on Facebook

Loads of Logs

*Local Sustainable Firewood Logs
generated from fellings & thinnings
from the Cotley Estate.*



- Seasoned dry wood ready to burn.
- Trailer and bucket loads delivered (locally) to you.
- Bags of kindling & firewood available now.
- Active replanting programme.
- Active management of woods to promote biodiversity.

Please ring Tom on 01460 239390

Underway Meade

Our Silver Anniversary picnic on Saturday 24th June was a great success, with perfect weather, picnicking families of all ages, musical entertainment, visiting sheep and tea and cakes! During the afternoon we dedicated a new bench to commemorate 25 years of Underway Meade as a local amenity and it now sits proudly in the picnic area, just outside the Wild Play area, with a plaque encouraging everyone to "Relax and Enjoy". Here's to the next 25 years!

The event would not have been such a success though without the loan of the marquee from the Gala Association, all the helpers who prepared the site, put up and took down the marquee, baked cakes, played music, helped us to clear up afterwards and of course, all who attended. Thanks everyone!

Whilst regular maintenance by our trustees and local volunteers will continue



Music at the Meade



Enjoying the new Silver Anniversary bench

through the summer, in late August we will be pleased to welcome back again a team from Wessex Water. They are all staff who are given time each year to volunteer to help out in the local community and choose to come here so we feel very fortunate.

By the end of August, we will also be looking forward to the return of our friendly sheep. This summer they have had 7 lambs between them so we may see some new faces when they arrive for the autumn to do their usual job of munching through the grass on the mound. It is largely down to them that the mound has had a good array of wildflowers which in turn has encouraged the butterflies, including small skippers, marbled whites and meadow browns.

Have a great summer everyone and do spend some time in the Meade, whether sitting peacefully watching the wildlife, playing in the Wild Play area or walking the dog and if you enjoy yourselves and are not already a Friend of the Meade, please consider joining (forms at the Symes Gate or from the Combe website <https://combestnicholas.org.uk/underway-meade/>) and help us to maintain this special place.

Lynn Osborne, Chair, Combe St. Nicholas Parochial Trust.
Tel: 01460 62015 Email: lynnosborne99@gmail.com



AYLOR SWEEPS

Chimney Sweep and Stove Installer
07814 594 421



All types of chimneys and flues swept
OFTEC registered stove installer
Certificates issued
Creosote removal treatment service

Maintenance/Service work completed
CCTV inspections
Birds nests removed
Cows supplied & fitted

Web: taylorsweeps.co.uk
Email: achimneysweep@mail.com

Ben's Carpet and Upholstery Cleaning

Trading Standards approved.
Professional,
courteous, reliable.
Discount for OAPs.



Please call
01460 239837
or
07729 365846

benscarpetcleaning@hotmail.com

Combe Dingle Plant Nursery

We invite you to come
and take a look...

**Interesting herbaceous
perennials
Vegetable plants and
Bedding**

Opening Hours:
Weekdays 9am - 4.30pm
CLOSED WEDNESDAYS
Sunday 10am - 1pm

**Combe Dingle Farm,
Street Ash**

Tel: 01460 234660



Village Hall Latest Winners!

With the 2 draws taking place recently, the Village Hall Lottery is very pleased to announce the following prize winners:

June 2023

1st Place was Collette Boyle. (72)
2nd place was Jackie Nicholls. (16)
3rd place was Jackie Tovey. (27)

July 2023

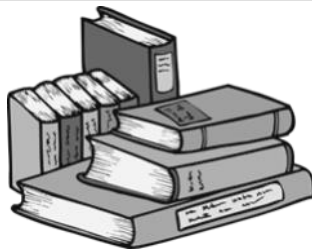
1st Place was 45. (Jackie Walker)
2nd place was 103. (Ian Croucher)
3rd place was 54. (Mel Cook)

A very big congratulations to them and an even bigger THANK YOU for your support.

If you haven't joined to help raise money for your village hall, then please call Ian on **01460 64098** or email **csnvillagehall@hotmail.com** to get your application form and start joining in the fun and you could become a WINNER! as well.

Wadeford Charity Book Club

The July Book Sale was the quietest we've had for some time. There were plenty of fresh donations, thank you for those, but possibly fewer people attending overall? Remember, if you want us to continue providing regular book sales, whereby you can acquire your reading material for a mere fifty pence per volume, then we need your support.



The next two sales are scheduled for Sundays **September 3rd** and **November 5th** – yes, that's only two book sales left before Christmas. (Sorry about that!)

Our policy "to never say no" to offers of books remains, but if you do have a full Transit load, or need collection, please give us a call on **01460 261950** beforehand.

Free entry, remember, and we are open 2pm – 4pm, with a request you get there by 3.30pm – we still have a lot of tidying up after our visitors have left. Thanks all !!!!!!!

**Keep in touch with the Combe village website
- visit www.combestnicholas.org.uk**



Succulent Interiors

Bespoke succulent arrangements
available & to order.

Plus a stunning range of indoor pots,
planters, vases & plant theme prints,
cards & stationery
for your home & as gifts

Free local delivery
or collection from Combe
Card, cash & BACS payments accepted

Like to view and choose at home?
Contact us for an appointment.

07957 323833

Email: sally@succulentinteriors.co.uk

Website: www.succulentinteriors.co.uk

Instagram & Facebook: Succulent Interiors

Please follow, like & share - we value your support



Pole Rue Farm

Holiday Cottages

With a Llama Landscape
in Combe St. Nicholas

2 beautiful self-catering cottages

★★ Open All Year ★★

www.poleruefarm.co.uk

(01460) 238542

ASHCULME

07815146343
info@ashculme.co.uk

NPTC

Part of the City & Guilds Group

**QUALIFIED
WORKFORCE**

ALL TREE WORK UNDERTAKEN

- *Removals / Crown Reductions & Lifting / Deadwooding & More*

STUMP REMOVAL

GARDEN CLEARANCE WORK

LANDSCAPING

HEDGE REMOVAL & MAINTENANCE

Residential & Commercial
work undertaken by our
fully insured & qualified
workforce

Emergency Call Outs 24/7 - Paul Durman - 07815146343

Combe St. Nicholas 47th Annual Show

This is a reminder that the 47th Annual Show will take place in Combe St. Nicholas Parish Church on Saturday 5th August.

Show Schedules and Entry Forms are available at the Village Shop and Combe Dingle Nursery. They can also be found on the Parish website at <https://combestnicholas.org.uk/combe-st-nicholas-47th-annual-show/>

This will be the first show for four years, so please give us your support. Let's make it a bumper show!

Rob Grimmond 01460 261234

Combe St Nicholas 47th Annual Show

Saturday 5th August

Combe St Nicholas Parish Church

Open to the public from 2.00pm

Refreshments

Weather watch – local rainfall report



Period	2023 Actual	2022 Actual	10 Yr Ave 2003-2012	10 Yr Ave 2013-2022
May	59	71	75	87
June	28	60	69	76
Jan - April	386	234	328	402
TOTAL	473	365	472	565

All measurements in millimetres 25mm = 1" = 45 gallons/sq yard

The rain in May came within a 10 day period, with the rest of the month remaining dry. There were only 5 days when rain fell in June and those were all within the one week. Relatively small amounts on those days, together with the scorched grass, reinforced the notion that we were experiencing drought conditions.

Domestic Electrical & Property Services

All aspects of domestic electrical work undertaken

- Testing and inspection
- Commercial installations
- Part 'P' registered electrician
- Property maintenance
- Mechanical maintenance
- CCTV & Intruder Detection, Installation, Service & Repair

☒ Fully Qualified ☒ Fully Insured ☒ Warranty Available

All work considered throughout the South West

For a Reliable, Honest & Efficient Service

Please Call John on:

07525 782 678

01460 54583

Or e-mail: JohnnyKay@talktalk.net

Special rates as new in business



Stuart Weech Joinery

Bespoke,
made to measure
joinery items.

*Hardwood windows,
doors, gates and all other
joinery items considered.*

For a quote call:

07786061475

Email: swjoinery1@hotmail.com

Lodge House B&B

Buckland St Mary, Chard,
Somerset TA20 3TA

Tel: 01460 455455

www.lodgehousebandbsomerset.co.uk

www.facebook.com/LodgeHouseBandB

Hosted by Neil and Kathy Arnold

Country Fare Catering

Caterers for
celebrations
of all types



Hot & Cold
Buffets or
sit down meals

We use fresh local ingredients

For more information call

01460 66743 or 07450 829169

Or email te.margetts19@gmail.com

Round The World In Dance And Music

Combe World Circle Dance group will be starting its third year in September, and we invite you for a free taster session to find out why we enjoy it so much!

The dances and music come from all over the World. It's an excellent way of keeping our minds and body well whilst making friends and having a laugh in a friendly relaxed group. We also celebrate the seasons and World's events through dance and music. In June we celebrated the King's birthday with a medieval English court dance and a dance to a Bristol folk group.

In September and October we'll be celebrating the harvest – with a dance to Sting's 'Fields of Gold', Neil Young's 'Harvest Moon' and a dance called 'Sow and Reap' played by a Ukrainian band. Then for United Nations Day we'll dance 'Hallelujah to the Whole World', which comes from Finland.

We're lucky to have WORLD CIRCLE DANCE groups in Combe St Nicholas – on Mondays twice a month – 2 classes on offer, either 10am or 2pm. You don't need a partner or any experience, just a bit of a sense of rhythm. The classes are friendly, non-competitive, and the motto is 'there are no mistakes, only variations'.

What do the dancers most enjoy about their classes? "I love the 'no pressure' atmosphere", "Lilly teaches very clearly and makes it all seem so easy" "I forget all my day-to-day cares and problems".

Newcomers (**AGE 50+**) are invited to join the group for a **FREE TRIAL SESSION on either MONDAY September 5th or 18th – choose the best time for you – 10am or 2pm. Combe St Nicholas Village Hall.** For more information or to say you're coming along call **Lilly on 07711 702460** or email: **lilly@newhaven4.co.uk**

Combe St.Nicholas and Wadeford Gala Association

An extra-ordinary AGM of the Gala Association will be held on **Monday 11th September** at 7.30 in the Village Hall. Apart from the annual Christmas Tree on The Green things have been rather quiet from the Gala since Covid interrupted usual events.

Would you like to see other events happening in the Parish for the benefit of the Community – If so please come along and share your views. If not, we need to decide about the future, and where the funds held should go.

The Gala Committee
(ring 61296 if you have any views but can't come to the meeting)

Combe St. Nicholas Parish Council

New volunteers for Speed Watch are nearly at the end of their training, and may be seen shortly at Chardleigh Green. Thanks extended to them.

Some verge cutting for visibility at road junctions has been carried out by local farmers, and the general verge cutting programme should occur in this Parish shortly. Please keep all ditches, drains, etc. free of cuttings or grass clippings.

The telephone box and post box look smart now, thanks to one of our residents. The seats on The Lawns have also been repainted and the play equipment and Victorian lamp-post will be done as weather permits.

The Green gets spoilt though by people who put household waste, dog bags, in the dog bin and still try to put things in when overflowing. Please – if the dog bin is full, take your bag home, double wrap it and put in your black bin. Similarly, any household waste or rubbish from your car. Thank you

Unfortunately, the time old problem of dogs mess is still around. If you own a dog it is your responsibility. Please ensure you clear up after it – it is so unpleasant for other people, especially in children's play areas.

Some footpaths repairs at the bottom of Bonds Hill – Court Mill Lane, Wadeford, will be carried out shortly.

Meetings continue to be held to sort out the problems re possible future flooding, or other emergency situations. More equipment will be purchased soon, but more residents to become Flood Wardens would be very welcome. A lot of work continues to be carried out at Pudleigh creating a flood alleviation area some dredging of the leat.

The next Parish Council meetings will be held on **Thursday** 24th August, (due to Bank Holiday Monday) and Monday 25th September at 7.30pm in the Village Hall.

Anne Hunt – Parish Clerk, Tel. 01460 61296
combestnicholaspg@gmail.com
website – www.combestnicholas.org.uk

Whitestaunton News

New Church Gates at Whitestaunton Church

Whitestaunton Church is delighted to share with you that the new church gates have been installed and look fantastic. We would like to say a huge thank you to Bob Dunn from Chardstock Joinery for making the gates. He made them as a replica of the old gates and used as much of the original iron work as he could. We would also like to say a huge thank you to Tim Parsons from Crickleaze who made us two missing trefoils on the bottom of the gate free of charge. We would also like to say how grateful we are to everyone who helped to pay for the gates by kindly donating money to the Fabric Gate Fund including The Hines Family and Joan White, who opened her garden and held some of her famous cream teas.



Whitestaunton Church What's On All Welcome to Join Us!

Summer Afternoon Concert

Performed by local talented young musicians

Followed by Refreshments and Cake

Sat 12 August 4pm - Whitestaunton Church

Retiring Collection in aid of Whitestaunton Fabric Fund

Summer Evening Songs of Praise

With In Ecclesia Choir and Local Church Choirs

Readings, prayers, songs and favourite hymns

13 August 2023 6pm - Followed by Cake and PIMMS

Craft Fair and Coffee

Sat 23 September - 11am to 3.30pm

At Buckland St Mary Village Hall

Free Entry

Proceeds to go towards Whitestaunton Church Fabric Fund

If you would like to book a stall at the Fair please contact Jane Harris

janeharris334@gmail.com

August

Fri	4	6.30pm	Film Night - Village Hall <i>A Man Called Otto</i>
Sat	5	2.00pm	Combe St Nicholas 47th Show - Combe Church
Sun	6		See Church Services
Wed	9	7pm-9.30pm	Short Mat Bowls - Village Hall
Fri	11	2pm-4pm	Short Mat Bowls - Village Hall
Sun	13		See Church Services
Wed	16	7pm-9.30pm	Short Mat Bowls - Village Hall
Fri	18	2pm-4pm	Short Mat Bowls - Village Hall
Sun	20		See Church Services
Wed	23	7pm-9.30pm	Short Mat Bowls - Village Hall
Thu	24	7.30pm	Combe Parish Council - Village Hall
Fri	25	2pm-4pm	Short Mat Bowls - Village Hall
Sat	26	10am-11am	Combe Duplo & Duplo Club - Methodist Rooms
Sun	27		See Church Services
		12-2pm	Combe Café Sunday Lunches - Village Hall
Wed	30	7pm-9.30pm	Short Mat Bowls - Village Hall

STOP PRESS!

A CONCERT

By THE FAREY FAMILY

SUNDAY SEPTEMBER 3RD

In Combe Church

3.30pm - 4.30pm

Tickets on sale soon - see posters/social media for details

In aid of the church ceiling fund

your diary

September

Fri	1	6.30 for 7.00pm	Film Night - Village Hall <i>Death At A Funeral</i>
Sun	3		See Church Services
		2pm-4pm	Wadeford Charity Book Sale - Village Hall
		Last entry 3.30pm	
Mon	4	10am & 2pm	World Circle Dance - Village Hall FREE taster session for newcomers See p15 for details
Wed	6	7pm-9.30pm	Short Mat Bowls - Village Hall
Thu	7	7.30pm	Combe Folk Dance Club - Village Hall
Fri	8	2pm-4pm	Short Mat Bowls - Village Hall
Sun	10		See Church Services
Mon	11	7.30pm	Combe & Wadeford Gala Assn - Village Hall <i>EAGM</i>
Wed	13	7pm-9.30pm	Short Mat Bowls - Village Hall
Fri	15	2pm-4pm	Short Mat Bowls - Village Hall
Sun	17		See Church Services
Mon	18	10am & 2pm	World Circle Dance - Village Hall FREE taster session for newcomers See p15 for details
		7.30pm	Combe Community Group - Village Hall
Wed	20	2.30pm	Women's Fellowship
		7pm-9.30pm	Short Mat Bowls - Village Hall
Fri	22	2pm-4pm	Short Mat Bowls - Village Hall
Sun	24		See Church Services
		12-2pm	Combe Café Sunday Lunches - Village Hall
Mon	25	7.30pm	Combe Parish Council - Village Hall
Wed	27	7pm-9.30pm	Short Mat Bowls - Village Hall
Thu	28	7.30pm	Combe Folk Dance Club - Village Hall
Fri	29	2pm-4pm	Short Mat Bowls - Village Hall
Sat	30	10 - 11am	Combe Duplo & Lego Club - Methodist Rooms



Auxilia Financial Services

Award winning, trusted and reliable local Mortgage advice based in Broadway, Somerset. With over 50 mortgage lenders including High Street names, we'll find the right mortgage & protection for you and your family.

- | | |
|--|--|
| <input checked="" type="checkbox"/> First Time Buyer | <input checked="" type="checkbox"/> Life Insurance |
| <input checked="" type="checkbox"/> Moving Home | <input checked="" type="checkbox"/> Serious & Critical Illness |
| <input checked="" type="checkbox"/> Remortgaging | <input checked="" type="checkbox"/> Income Protection |
| <input checked="" type="checkbox"/> Buy to Let | <input checked="" type="checkbox"/> Building Insurance |
| <input checked="" type="checkbox"/> Bad Credit Mortgages | <input checked="" type="checkbox"/> Contents Insurance |

☎ 07810 068987 ✉ ben@auxiliafs.com 🌐 www.auxiliafs.com

Your property may be repossessed if you do not keep up repayments on your mortgage or any of other debt secured on it.

Auxilia Financial Services is a trading style of Benjamin Mark Small which is an appointed representative of The Openwork Partnership, a trading style of Openwork Limited which is authorised and regulated by the Financial Conduct Authority



CHIROPODIST PODIATRIST

Christian Grimminger
SRCh DPodM MRCPod

**Professional, Experienced
& Caring**

Essex House Medical Centre, Chard
01460 30114

Tawstock Medical Centre, Chard
01460 30114

The Linenyard Practice, Crewkerne
01460 78068

Home visits: 01460 30114



The Potting Shed Café Open daily for all things nice

**POTS OF COLOUR
HANGING BASKETS AND
COLOURFUL BORDERS**

We are full to bursting with everything you need to make a wonderful display in your garden this summer.

Call in and look around

*Your friendly Local Garden Centre –
that just keeps growing*

**Chard Garden Centre
Cuttifords Door, Chard
01460 63088**



Walkies, playdays or holidays-at-home. Forest and beach walks, plus a secure 1.5 acre paddock on site. Based in Combe St. Nicholas. References available.

Prices from just £15
lornadogzpal@gmail.com

DOGZPAL 01460 929193 or 07703 471911

WAYNE M LEWIS GARDEN SERVICES

01460 54034 / 07968397648



**Painting
Decorating
Timber Window Conservation**

f R. Barrett Decorating Services
Tel: 01460 259744 Mob: 07759 177029
www.timberwindowconservation.co.uk
professional – reliable – efficient

Pest Control Services



**Fast Response
Commercial
Domestic**

☎ 07730561506

Covering Devon/Somerset/Dorset

Smyth Pest Control Services



www.smythpestcontrol.co.uk

Wasps, rodents, birds, moles & insects all covered

***A Moment in Time* with John Phillips: Part 2**

On Sunday July 5th 1685 shortly before midnight the 5,000 men and 500 horses of Monmouth's rebel army left their camp at Castle Fields outside Bridgewater. They marched in complete silence 6 miles by a circuitous route to carry out an audacious surprise attack on the Royal Army camped at Westonzoyland. Within 12 hours over a quarter of these men would be dead killed, in the battle of Sedgemoor. Within 3 months another quarter of these men were sentenced



by "Bloody" Judge Jeffries to be "hung, drawn and quartered" or to be transported to the West Indies.

The rebel army had returned to Bridgewater 2 weeks after leaving it. They were weary and footsore having marched to Bath and retreated via Frome back to Bridgewater. However, they were still a very organised and determined body of men. They outnumbered the royal army by 2:1 but were very weak in trained cavalry and artillery.

Monmouth was informed, that the artillery of the royal army camped 3 miles away at Westonzoyland was some distance from the infantry. If he captured or disabled them victory could be his. It was a high risk but high reward plan. It very nearly paid off. Amazingly none of the royal pickets spotted the silent 2-mile-long column of men and 500 horses until a single musket shot raised the alarm. The royal army was alerted just in time to thwart Monmouth's desperate last throw of the dice.

The Bishop of Winchester, whose nickname was "Old Patch", was at Westonzoyland. He had arrived there with his coach and horses to watch the

“pernicious rebels” get what he felt they richly deserved - utter defeat. On hearing the musket shot he immediately ordered his horses be harnessed to the royal cannon and helped to move them rapidly to where they could fire on the rebels. Once there they soon knocked out the rebel cannon. Then using cannister (grape) shot cut great swathes of death and injury in the ranks of the rebel pikemen and musketeers. Monmouth was defeated and 9 days later beheaded at Tower Hill London.

How many of the 50 or so men from our 3 parishes died in the battle will never be known. All the rebels slain were buried in mass graves, dug by villagers of Westonzoyland and Chedzoy. One might suggest, on the law of averages that 12 were buried in the pits dug by the villagers of Westonzoyland and Chedzoy. But the fortunes of war do not deal in averages.

We do however know the names of the c.1300 men sentenced to be hung, drawn and quartered or transported to the West Indies as virtual slaves. Thus, we know the fate of 8 men from our parishes so sentenced of which more in the next issue.

Historical Blackdowns

A significant proportion of the Blackdown Hills landscape has been identified as Medieval in origin. Key sites of the Medieval period include Castle Neroche, Dunkeswell Abbey and Hemyock Castle. All three sites are Scheduled Ancient Monuments.

Castle Neroche is in a striking location on the northern escarpment overlooking the Vale of Taunton. It is an early Norman earthwork castle built on an earlier Saxon and possibly Iron Age defended site. Hemyock Castle is a good example of a fortified manor house of the later Medieval period.

Dunkeswell Abbey was founded in the 13th century. It is likely to have had a significant influence on the wider landscape through its grange farms and probable involvement in iron production.

The Blackdown Hills Area of Outstanding Natural Beauty is exceptional because of the large number of Medieval houses still intact. Examples include Membury Court, Whitestaunton Manor and Lower Lye at Stockland. Many are Grade II* listed buildings. They contain particularly fine woodwork in the form of screens, ceilings and jetties – evidence of the transition from open hall houses to more modern forms. A particularly large number of Medieval houses can be seen in Broadhembury.

STEPHEN MELLING

Painter & Decorator

Wootton House, Underway,
Combe St Nicholas, Chard
Somerset, TA20 3NY

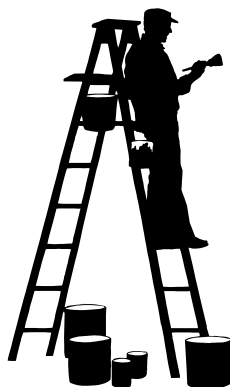
Tel: 01460 64353

40 YEARS EXPERIENCE IN THIS AREA

- Quick Response to Enquiries
- Detailed Estimates, Rapidly Despatched
- High Quality Workmanship and Attention to Detail
- Giving You the Confidence and Security for all your Internal and External Decorative Work

Also

**TILING - GUTTERING - TIMBER REPLACEMENT
GENERAL HOUSEHOLD MAINTENANCE**



Arboricare Ltd

The cutting edge of tree care.

- | | |
|-------------------|-------------------|
| ✓ Surveys/Reports | ✓ Pollarding |
| ✓ Planting | ✓ Crown Reshaping |
| ✓ Pruning | ✓ Thinning |
| ✓ Felling | ✓ Stumpgrinding |
| ✓ Fully Insured | |

Approved Contractor of the Arboricultural Association

- | | |
|------------------|---------------------|
| ✓ 24 Hr Call Out | ✓ Estate Management |
|------------------|---------------------|

Covering The South West

T: 01823 462972 M: 07831 108445

E: arboricare1988@gmail.com W: www.arboricare.co.uk
New Rendy Farm, Oake, Taunton, Somerset TA4 1BB



Clubs and Societies

Combe Art Group.

Since the beginning of the year we have had a variety of interesting ideas to paint or draw. Among many other subjects, we have tackled Trees in Winter, Boats at Sea, My Happy Place, an Aircraft in Flight, Waterfalls and Marine Life. We have had the privilege of practising our life-drawing skills with a very patient sitter as a fully clothed model, and some rather more quirky subject matter such as Creating a Pub Sign and Illustrating a Nursery Rhyme. As usual all subjects were approached with varying degrees of success but always with good humour.

We began our summer break following our purely social meeting on Friday, 19th May and we shall be reconvening on Friday, 15 September, 10.00 am to 12.00. This time may be extended to 12.30 pm if members so wish. We have been sorry to lose two or three members as a result of changed circumstances but we have also welcomed several new members and there are still one or two places for more newcomers.

Although Friday meetings in the village hall ceased in May we have, since then, met on a number of days to sketch out of doors in the local area. This is an enjoyable experience and we hope to continue doing this as long as the weather is suitable.

If you would like to join our friendly group please contact

David Selley, tel: 01460 61527, email brambles7@btinternet.com, or

Ian Whitehead, tel: 01460 64607 email, iandavidwhitehead3@gmail.com.

Audrey Ketcher

WANTED

WANTED

WANTED

YOUR CAR OR VAN

Before you part exchange or sell your car why not give me call for a price ?

Tel Martin on 07515 896095

Email: martin@combevillagecars.co.uk

Combe Village Cars

Buyers and Suppliers of Quality Vehicles

Local Handyman

25 years experience



- * Quality, professional work
- * Trustworthy and reliable
- * All types of home maintenance
- * Tiling
- * Wooden and laminate flooring
- * Kitchen and bathroom fitting
- * References available – DBS checked

**Fair prices and
excellent service guaranteed.**
Call Paul on 07894032119

CHIROPODIST/ PODIATRIST

STEPHEN WAPLINGTON

MSSCh, MBChA
HPC Registered

**EXPERT FOOTCARE
IN YOUR OWN HOME
AT NO EXTRA COST**

*For friendly and professional
treatment please call:*

01308 456724



Rapid-Print

**On the Blackdowns
Nr Chard • TA20 3HX
T: 01460 234 100
E: neil-wells@btconnect.com**

DESIGN, ARTWORK & PRINTING

**Full Colour or One
MAGAZINES • POSTERS
ADVERTISING LEAFLETS
GREETINGS CARDS
BUSINESS CARDS
COMPLIMENT SLIPS
LETTER HEADS
INVOICE/ORDER FORMS
DELIVERY NOTES
MAIL SHOTS • MENUS
JOB SHEETS / CARDS
BROCHURES • STICKERS
RING or EMAIL FOR A
QUOTE**

At Competitive Prices

**We can
Print from your Office
or PDF's Files**

History Group

At an extra A.G.M. held on 5th June it was decided to amalgamate the History Group in with the Combe Community Group in future. It a shame to lose the specific meetings of `just history` but they will still appear in the various programme events of the Community Group.

It was also decided to donate remaining funds to the Combe Community Group and the Village Hall

Thank you to all who have contributed to the Group over the years and enjoyed the various meetings and exhibitions – the latter can still be held as memorabilia and information is not lost!

Combe Community Group

There is no Community Group meeting in August, but we are providing the teas in the afternoon at the Annual Flower Show in the Church on Saturday 5th August. Everyone very welcome to that lovely event

Monday 18th September Aaron Baxter is sharing his experiences in the Navy, including serving on HMS Britannia, and submarines, **7.30pm in the Village Hall £3** entry including refreshments.

Everyone welcome to all meetings.

Ready to ramble?

There are collections of walks around Chard, Hemyock, Stockland and Upottery; walks in the north eastern and south western Blackdown Hills.

We also have a collection of routes for cycling and for horse riding.

Look out for guided walks in our events calendar or pick up an

Explore the Blackdown Hills leaflet, at venues throughout the Blackdowns.

To find out more go to our website:

www.blackdownhillsaonb.org.uk/visit/walks-rides/

GORDON SUGGETT & DAUGHTER

INDUSTRIAL DOMESTIC ELECTRICAL CONTRACTOR



GORDON

07752 239083

LUCY

07885 629884

INSPECTION AND TESTING PAT TESTING
SMALL REPAIRS TO NEW REWIRES
EMERGENCY LIGHTING
DOOR ENTRY CAMERA ALARM SYSTEMS
PRE HOUSE BUYING INSPECTIONS
ESTIMATES FREE



COMBE WOOD COMPUTERS

Computer & Laptop,
Repairs and Upgrades
Website Design & Digital Marketing

☎ 01460359752/07984419755

🌐 www.combewoodcomputers.co.uk



dave@combewoodcomputers.co.uk



F.R. Veale

*Painter
and
Decorator*



Fully insured

**Call Francis
on 01460 68423**



B D E fabrications

Architectural Metalwork Specialists

- ❖ Staircases ❖ Gates & Railings
- ❖ Balustrading ❖ Glass & Stainless
- ❖ Historic & Antique ❖ Structural Steels
- ❖ General Engineering, Welding & Fabrication

Clive Woods

Tel: 07818 033040

Email: info@bdefabs.co.uk

www.bdefabrications.co.uk

D. ELWOOD

Landscaping & Garden Maintenance

- Paving ● Fencing ● Decking
- Walling ● Turfing
- Grass Cutting ● Hedge Cutting

For all enquiries please contact

07849 790519



Yarcombe and District YFC

Summer is finally here and it is nice to see the sunny weather, especially our farmers are enjoying it. During May we were busy meeting up as a club and organising our upcoming summer events and programme of social activities.

Members helped at Yarcombe village Coronation celebrations on Sunday 7th May. This was a well-attended event in which we provided the bar and organised a tug of war competition. The village raised around £700 and we raised around £250 for Hospicare. Thank you to all members who attended and helped out on the day.

On the 10th May we helped Cathy Derryman and her family out for the NSA Sheep South West 2023. Well done to Will who came 3rd in the Overall Shepherd of the Year, Adam who came 3rd in the Student Shepherd of the Year and Andrew who competed to a very high standard.

At the annual Devon County Show this year members entered many classes and as a club. Our club cubicle came a respectable 11th place in a competition of 26 other entries. We also entered a club photo and scrapbook. Well done to Will, Peter, Oliver, Henry, Scott & Rob who participated in the tug of war competition at the show, it is great to see members getting involved. Thank you to those who made up the tag rugby team also. Lots of positive comments from those involved and potential to do even better in the future. Members continue to practice every week for tug of war, where the team will take part at many discos and shows coming up.

Continuing to help fundraise for Hospicare; we hope to raise lots of money at our charity cream tea and auction. We are helping Linda Wyatt at her upcoming event - Pimms, Picnic and Party at the Park with live music. We are helping provide the bar and alcohol for the event, which is in aid of Hospicare. With Hospicare we are also trying to organise a date to do FootGolf on the Exe.

Our upcoming summer water disco is on Friday 28th July. We are also hoping to organise a cider tour at Sheppy's cider and a raft race with Axminster YFC.

If anyone has any further questions and would like to become involved with Young Farmers, please contact our Chairman Will Vining on 07850605542. We have our club meetings every other week in either Yarcombe or Upottery Village Hall, 8pm start.

Natalie Sampson

Eleighwater House Retirement Home

Chard, Somerset.

Wonderful Relaxed Family Care Home.

Offering 8 single en-suite rooms.

First Class Care, Excellent Home Cooked Food

Registered with the CQC

www.eleighwaterhouse.co.uk

www.carehome.co.uk for recommendations

01460 67532

**FABRICS •
CURTAINS • LOOSE
COVERS • UPHOLSTERY**
CUSHION/SRING REPLACEMENT/REPAIR
*Combine your ideas with our
inspiration to create the
professional effect you
desire from our own
workshop in
Chard.*

We come to you for:
**FREE QUOTATION & ADVICE/
PATTERN SELECTION, ETC.**

RED HOUSE FURNISHINGS
CHARD-01460-
220110

E & S COMPUTERS

**Unit 27, Ilton Business Park,
Ilton, Somerset, TA19 9DU**

Desktop/Laptop Repairs & Upgrades
Custom Built PCs
Epson Express Centre

Ink Cartridges & Paper - Keyboards - Mice
Printers - Webcams - Cables - Routers
Wireless Adapters - Internet Security
And much more!



Give us a call on

01460 259999

or come & see us.



Email: enquiries@enscomputers.com

Website: www.enscomputers.com

Online Shop: www.enscomputers.co.uk

Established 2007

'Morpeth'

Comfortable, well-furnished
holiday cottage,
centre of Combe St. Nicholas

Sleeps 6 - available all year

Enquiries/bookings **01367 710445**

Email: rarapacker@gmail.com

www.little-white-house.co.uk

Duncan Pavey *Carpenter & Joiner*

20 yrs Experience

- ❖ Specialist Installer of Kitchens,
Bedrooms & Bathrooms
- ❖ Home Improvements ❖ Tiling
- ❖ Flooring ❖ Domestic Plumbing

T: 01460 63127 M: 07786 374 528

E: duncanpavey@gmail.com

The Blackdown Food & Craft Fayre

Sunday 27th August 2023

12noon - 4pm FREE ENTRY

Churchinford Village Hall & Car Park

Come & see the best the Blackdowns have to offer

Cream Teas from 12noon

Lots of delicious samples for you to try

Face painting and other young people activities

Learn about local food, mixed crafts,

how they're made & produced!

Car parking a short walk away with a drop off
available at the Village Hall for less abled visitors
and disabled parking onsite

In aid of Churchinford & District Community Shop,
Churchinford Preschool & Churchstanton School

Further information Ruth Marshallsay at 01823 601026 or
shopmanager@churchinfordshop.co.uk

Find us on  @BlackdownFoodandCraftFayre

Somerset Open Studios: 16 Sept – 1 Oct 2023

Derek Northfield & Gill Wright

will be opening their ceramics studio

at Lucas Corner, Combe St Nicholas. TA20 3HQ

September 16,17, 21-24, 28-01,10

from 11.00am- 5.00pm

See somersetartworks.org.uk for details.

Bishops Funeral Services

An Independent Family Owned Business
Associated with Local Funerals
for over 130 years

**PRIVATE CHAPEL OF REST
BLACK DAIMLER CORTÈGE**

Proprietor : Deirdre E. Cargen



Tel : 01460 66909 Fax : 01460 66580

**Email : bishops.funeralservices@btconnect.com
CILLERHAYES, OLD TOWN, CHARD, SOMERSET TA20 2AS**

A J Wakely & Sons

A Private Independent Family Funeral Directors
- 24 Hour Service -



Private Chapels of Rest

www.ajwakely.com

Golden Charter
Funeral Plans 



**7 West Street, Ilminster Tel: 01460 52576
45 Holyrood Street, Chard Tel: 01460 67900**

Please contact a member of our dedicated caring team for any advice or guidance.

Cloverleaf Parish Pages

See, I am doing a new thing!

Now it springs up; do you not perceive it?

I am making a way in the wilderness

and streams in the wasteland. (Isaiah 43)

This passage from Isaiah was part of a reading that I asked for in my last service on Sunday. It is one of my favourite passages from the Old Testament, and it is particularly pertinent to me as Mick and I move to Suffolk to begin new ministry and a new life there.

This passage links directly to Paul's words in 2 Corinthians 'So if anyone is in Christ, there is a new creation: everything old has passed away; see, everything has become new! ¹⁸ All this is from God, who reconciled us to himself through Christ'.

God is the God of possibilities and he longs for our hearts to be opened to him. However, it doesn't have to be an outward change such as physically relocating, changing job or moving house. God can work within us and make small changes, in our attitudes, our assumptions or our self-knowledge.

However what we have to do is always be open to God, not to close our minds and hearts and allow God to do his new work in us. We must be prepared to forgive both ourselves and others, we must be prepared to accept others and not insist that our way is the right way, and we must always look for Christ in 'the other'.

Being stuck in our ways, doing things because we've always done them or hiding behind habit and custom is not necessarily a bad thing, but it restricts us and doesn't allow us to live life in all its fulness. Age should not be a barrier to discovering new and surprising things about ourselves and about God.

Also God will often do his best work in us when we are in our own wildernesses, when we are lost or despairing, suffering or in anguish. He will make ways in the wilderness and streams in the desert.

Whatever state of mind we are in we must keep praying, studying scripture, listening to one another and searching for where God is at work in the world and always keep an open mind.

Most of all, we must trust in God and trust that he can always make things new. We can have this trust because of the work he did in Jesus Christ. God raised Christ from the dead so that now there is always the possibility of new beginnings, always the possibility of new birth and hearts made new in any situation.

As we move to Suffolk, we will be trusting in God in this new beginning, this new adventure that he is sending us on. I hope you too will always trust in God and that you will allow him to work new beginnings in you. He might just surprise you!

Rev'd Ann

Church Services across the Benefice

AUGUST	Combe	Wambrook	Whitestunton	Chard	Ham
August. 6th Trinity 9 Transfiguration	10.30 am Family Service	9.15am BCP Morning Prayer		8.00am HC 10.00am Covenant Service at Chard Methodist Church	6.00pm BCP Evensong
August. 13th Trinity 10	10.30 am Holy Communion	9.15am CW Holy Communion	6.00pm Songs of Praise	10.00am HC	
August. 20th Trinity 11	10.30am Service of the Word with the Methodists at the Parish Church	6.00pm No Service	10.30am To join Combe for their Service	8.00am HC 10.00am Morning Worship	6.00pm BCP Evensong
August. 27th Trinity 12	10.00am Benefice Holy Communion at Wambrook				

BCP Communion: 4th Wednesday of the month at 10.30am at Combe

Wambrook Flowers and Cleaning

Altar Flowers

Aug 6 Jacqueline Cosby
 Aug 13 & 20 Sue Wallace
 Sep 3 & 10 Susie Eames
 Sep 17 & Oct 1 Penny Luther

Cleaning

Nicola Nicholls
 Elena Eames
 Caroline Wakefield
 Hilary Owen

Church Services across the Benefice

SEPTEMBER	Combe	Wambrook	Whitestaunton	Chard	Ham
Sept. 3rd Trinity 13	10.30 am Songs of Praise around the Village	9.15am BCP Morning Prayer		8.00am HC 10.00am Morning Worship	6.00pm BCP Evensong
Sept. 10th Trinity 14	10.30am Holy Communion	9.15am CW Holy Communion	6.00pm Creation tide Service	10.00am HC	
Sept. 17th Trinity 15	10.30am HARVEST FESTIVAL at the Method- ist Church	6.00pm BCP Evensong	10.30am Holy Communion	8.00am HC 10.00am Morning Worship	6.00pm BCP HARVEST FESTIVAL Evensong
Sept. 24th Trinity 16	10.00am Benefice Holy Communion at Chard				

FROM THE PARISH REGISTERS

Baptisms:

Eadie Lucinda Dyer

Whitestaunton

Maddison Rhianna Hardie

Combe

We give thanks for the lives of:

Alan Linstead

Combe

Micheal Legg

Combe

For enquiries about Baptisms, Weddings and Funerals please contact the clergy. If you would like us to visit you or just want a chat please do not hesitate to contact me.

Rev Georgina

Cloverleaf Parishes Information

Clergy contact details:

Rector: Rev'd Ann Kember

The Vicarage, Forton Road, Chard TA20 2HJ

Tel: 01460 351521 Email: annkember58@gmail.com

Associate Rev'd Georgina Vye,

Vicar: The Vicarage, 57 Caraway Close, Chard, TA20 1HP

01460 66159 or 07950 989916 Email: g.vye@btinternet.com

Cloverleaf Churchwardens

St Nicholas, Combe:

Penny Croucher (07780 081081)

Keda Horn (07867 300795),

St Mary's, Wambrook:

Graeme Pidgeon (07807 284738)

Visit the Wambrook website

www.wambrookparishchurch.com

St Andrew's, Whitestaunton:

Jane Harris (PCC Secretary - 239113),

COMBE ST NICHOLAS METHODIST CHURCH

Services: 10.30am fortnightly (as per plan on Noticeboard on railings)

Minister: Rev Anna Flindell (01460 261766)

Steward: Arnold Coleman (64892)

Copy date for June/July issue of Cloverleaf

*Items for Cloverleaf should be e-mailed to csnparishmag@btinternet.com or delivered to **The Village Shop & Post Office, Combe** NO LATER THAN 12noon on **TUESDAY 12th September**. Please note: long articles may have to be edited and inclusion cannot always be guaranteed.*

Distributors: August/Sept Magazines will be in Combe Church ready for collection after 2.30pm on Friday 22nd Septembet.

If you would like to advertise please call **01460 61896** or email csnparishmag@btinternet.com for availability of space and rates.

The inclusion of advertisements in this magazine is not a recommendation or endorsement by the magazine of either the advertisers or their goods or services. Readers must satisfy themselves as to the ability of the advertiser to provide the required standard of product or service.

A.G.M.

Axminster Garden Machinery

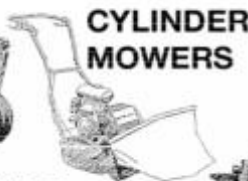
• SALES • SERVICE • SPARES •
Independent Specialists



ALWAYS
GREAT DEALS
AVAILABLE



RIDE ON MOWERS



CYLINDER
MOWERS



BRUSH
CUTTERS



ROTARY
MOWERS

ASK US ABOUT

CHAINSAWS, GENERATORS, ROTAVATORS, HEDGE CUTTERS and other Machines

All Parts Extra and Free Collection within 15 mile radius

CONTACT THE GARDEN MACHINERY SPECIALISTS FOR GREAT DEALS
VISIT OUR LARGE SHOWROOM AND STORES

UNIT 1A, WEYCROFT AVENUE, MILLWEY RISE, AXMINSTER EX13 5HU

TELEPHONE: 01297 631186

www.axminstergardenmachinery.co.uk

B. GIBBS FUNERAL SERVICES LTD.

An independent family business providing
24 hours professional care, personalised planning,
qualified advice and guidance for peace of mind



- Pre-paid Funeral Plans
- Home Visiting Service
- Private Chapel Of Rest

NAFD
Resolve

Chard

The Manse, 28 Fore Street,
Chard, Somerset TA20 1PT

01460 66100

Email: chard@bgibbsfuneralservices.co.uk

Ilminster

25 Silver Street, Ilminster,
Somerset TA19 0DH

01460 929100

Email: ilminster@bgibbsfuneralservices.co.uk

www.bgibbsfuneralservices.co.uk

Proprietor: Mr Barry J. Gibbs Dip FD NAFD

Carrie & Jason welcome you to
HAYMAKER INN

WADEFORD, CHARD, TA20 3AP

01460 64161

**WARMER DAYS?
RELAX IN OUR SPACIOUS
BEER GARDEN**

Great food served every day except Wed lunchtime

Come and enjoy our delicious Sunday Roast

1 course - £9.50, 2 courses - £12.50, 3 courses - £15.50

Booking essential!

N.T.HECTOR

ELECTRICAL SERVICES

**ALL ASPECTS OF DOMESTIC ELECTRICAL
INSTALLATIONS AND MAINTENANCE**

- Local, reliable and efficient service
- Over 30 years experience
- Work guaranteed and insured
- Competitive prices and free estimates

CLOVERLEAF COTTAGE, COMBE ST. NICHOLAS, CHARD

Tel: 01460 64449 or 07759 146172