

CLOVERLEAF

Connecting OUR Communities



April - May 2023



Barleymow's

FARM SHOP & RESTAURANT

Your local Farm Shop supporting local producers,
because it tastes better.

½ mile west of Chard on the A30
Tel: 01460 62130



POST
OFFICE

The Village Shop & Post Office

Combe St Nicholas



Newspapers and magazines
delivered daily in Combe.
Order yours now!

Wide range of Groceries ●
Confectionery ● Beer & Wine ●
Household products ● Fruit &
Vegetables ● Dairy ● Coal and Logs...

PLUS, access to full Post Office and banking facilities!

SUPPORT YOUR LOCAL SHOP



Opening Every Day

Mon-Fri 7.30am to 6.00pm Sat: 7.30am to 5pm Sun 8.00am to 1.00pm
Tel: 01460 62138

Overview

While the UK shivers in Arctic temperatures, thanks to the wonders of modern technology I am currently compiling and editing this magazine from my son's home in Hong Kong, while enjoying a balmy 23° C, looking out over the turquoise South China Sea with a cloudless blue sky above. Although HK is sub-tropical, such warm sunny weather at this time of year is unusual and a change in wind direction could easily turn this idyllic situation into something resembling Combe on a damp day with the persistent mist and constant drizzle. Fingers crossed for the sunshine lasting a bit longer!

The main news in this issue is the state of the Village Hall roof (p 3)! This building is at the heart of village activities in Combe, providing useful space for everyone. Fund raising events are planned (see page 11) so, hopefully, the appeal will produce quick results.

As well as hosting most of our clubs and societies, the Village Hall is also the home of Combe's Film Nights and some great films are coming in April and May - check them out on page 5.

Easter is at the beginning of April this year and full details of all the church services, including Holy Week, are shown on pages 34 and 35.

May looks like being a busy month, with a considerable amount of activity centred around the Coronation on Saturday 6th May - see page 21. There are quite a lot of loose ends to be tied up, so keep an eye on social media or look for posters giving the full details of all Coronation related events in due course.

Whitestaunton's Summer Concert is being held on the following weekend - on Saturday 13th May. This was planned to take place in Whitestaunton Church, but due to problems with the roof, this will now be held at Combe Church. The advertisement on page 22 has more details including where to buy your tickets.

The Combe 10K will take place on this weekend too, on Sunday 14th May. Run by Combe School's PFA, this is a major fund raising event and is very popular with runners as it's so well organised. However, to live up to its well-deserved reputation, the event needs lots of volunteers. So, if you can spare a few hours on that Sunday morning, please do let the organisers know. You'll find contact information on page 13.

Lesley Cole

Editor

*In the Garden..*with Claire Stenhouse at Combe Dingle Nursery

By the time you read this I would have had my annual plug plant spring weekend in the Nursery. I always look forward to this. For one, it is good for me to have a deadline to get myself organised and the Nursery ready to welcome the first of this year's plant deliveries and hopefully lots of people milling about, drinking tea and looking forward to the season ahead. I wonder if it makes my job look too easy. You get your little plants, grow them on and bingo, summer colour. The thing to remember is that most of them need growing on slowly. They will last longer and make stronger plants. Mine are grown on in an unheated polytunnel kept frost free.

The forecast for the weekend is not as cold as it has been, and some rain expected. This will be most welcome after this long cold dry spell. I know many of us have been put off getting much done because of the cold.

In the vegetable garden Kale and Purple Sprouting are going strong and the odd cauliflower. Autumn planted onions, shallots and garlic are looking strong but in need of weeding. The hairy bitter cress has overwintered well and must be removed before it sets seed.

Your first earlies should be on chitting. These are the ones that really benefit from that head start before planting out. I am not sure that it makes much difference to the main crop. We can start sowing some seed in the ground now such as carrots, peas, parsnips. I was reminded today by a dear friend of the benefits of successional sowing to extend cropping times. I aim to be better at this this year.



Remove hairy bittercress now

I have made the most of the dry weather to extend my garden, incorporating a small paddock. This involved taking out a post and rail fence and a dog rose hedge that was no good to man nor beast. I have replaced it with a mixed shrub border under planted with spring bulbs. This will provide feed and cover for wildlife over a longer season and provide me with foliage and stems to extend the cutting season. The grass had been eaten down by sheep to almost bare earth and the moles have provided a nice covering of fine soil. In the next couple of weeks, I will scatter and rake in my very precious Goren Farm wildflower seed. I am not sure that I will appreciate the moles so much when it comes to scything time, but I will cross that bridge when I get to it!

THERE'S A HOLE IN OUR ROOF!

The Village Hall Committee has become very aware that the hall's roof is showing its age. Having consulted professionals, we are advised that our 111-year-old roof needs some serious TLC. We have established that there is no waterproof membrane underneath the tiles, the timber battens are rotten and there is no insulation in the roof area, so much of the heat we produce to keep us warm in the hall is just floating off into the Combe sky; not surprising when you consider the hall was built in 1912.



We have been busy getting estimates as to likely costs involved, the plan being to strip off the roof tiles, install 2 different types of insulation and finally a breathable membrane, then put it all back together again. Along with all this work we have looked at the longer-term sustainability of the hall, and at the likely savings of fitting Solar Panels. The practical common-sense thinking is that, whilst the tiles are off and the scaffolding is in place, it makes perfect economic sense to utilise the cost savings this offers.

What does this all cost? Well, the roof/insulation estimates are working out at around £23,400 + VAT and the cost of 18 Solar Roof Panels fitted is about £10,630 + VAT. This work is estimated to give about a 42% saving on our yearly electricity bill, and if we managed to fund the fitting of a 10kwh battery into the system at a further cost of £8,770 + VAT, the savings really start to get impressive.

As you might expect, we are looking for some help with funding this project. We have managed to build up the VH reserves, the Parish Council have pledged us £5,000 and we have applied for a £12,000 grant from the ACRE Platinum Jubilee Village Hall Fund, but this money is very hard to get and by no means guaranteed. So, we are asking you all directly, both our hall users and the members of our community, if you could possibly make a donation to help us carry out this much needed work in order to give our much-loved little hall a warm and secure future. Please feel free to contact Ian our Treasurer on **01460 64098** or you can email **csnvillagehall@hotmail.com** for more information. Many, many thanks for taking the time to read this plea and for your support.

Ian Croucher

BOB DUNN

CHARDSTOCK JOINERY

Quality Purpose Made Joinery

Windows

Stairs

Doors

- Over 45 years experience
- Supply or supply & install
- Listed building work

Tel: 07875 067092

Email: chardstockjoinery@hotmail.co.uk

Alexander

THE GRATE



01460 613220

Chimney Sweep

APICS member & HETAS registered.
Fully Insured, Certificate Issued.

Friendly, Clean, Professional Service:
Brush & Vacuum; Power Sweeping.

www.gratechimneysweep.co.uk
Email: a.gratesweep@gmail.com
1 Old Orchard, Forton, Chard, TA20 2LX



WILLIAM YOUNG

PIANOS

- Tuning
- Repairs
- Restoration
- Cabinet work
- French polishing
- Sales

From a sticky note to a full rebuild

Over 20 years' experience inc
Steinway, Bluthner, Bechstein

Tel: 01884 906313

Tuning: 07714 993171

hq@wypianos.co.uk
www.wypianos.co.uk

Oven Spa

South Somerset's independent,
environmentally friendly, oven
cleaning service.

No fumes, no fuss, just a super shiny
oven that looks as good as new.

£55 for a single oven, £65 for a
double. Hobs & extractors from £10.

See ovenspa.com or call Mick
George on:

07843 99 88 96

DIRTBUSTERS
OVEN CLEANING NETWORK

Village Hall

Just a brief article about forthcoming events as we have separate news about our roof, though we would like to say a massive thank you to the person (who has asked not to be named) who has donated £1000 to the fund, which will be worth £1250 to us as it has been gift aided. This is a fantastic start and we couldn't be more grateful.

The next film nights will be:

7th April:

The Banshees of Inisherin. Winner of 7 BAFTA Awards, starring Colin Farrell, Brendan Gleeson, Kerry Condon and Barry Keoghan.

5th May:

Fisherman's Friends: One and All. Based on a true story, featuring the famous Fisherman's Friends Sea Shanty Singers.

Village Hall Committee

Wadeford Charity Book Club

Our March sale proved to be another success and we will be sending off cheques once again to our charities, Prostate Cancer and the Coeliac Society. Thanks again to all involved.



The next one is booked for Sunday May 14th and we will be donating all the money taken on this occasion to the Village Hall Roof Repairs Fund. Let's make it the best sale yet!

In some ways we are the victims of our own success in that the generosity of donors sometimes threatens to overwhelm us. There are limits on the amount of stock we can store and so at the end of end sale we need to sort them all out, replacing some of the older books with fresh. The surplus is subsequently passed to other charities; a few end up at the recycling centre. To allow us time to do all this, in future we will be asking attendees to arrive before 3.30pm. Anyone still browsing at that time is welcome to carry on so doing.

Hope to see you again on May 14th.

Underway Meade

February was a busy month following the pond maintenance that took place at the second attempt on 29th January. It looks a bit bare around the pond at the moment, but previous experience has shown that the reeds will be growing and greening up as the weather warms up and then we can expect the moorhens back as they start nesting. It was also interesting to note that a grey heron started visiting the pond regularly after the clearance, perhaps having spied the small fish which were spotted during the silt clearance work?

The wonderful Neroche Conservation Volunteers came along on 1st February and constructed a set of steps from the stile down to the leat path on the mound.

his allows a level walk along to a new bench, which they also made for us, and which gives lovely views across the valley towards Scampton without the need to go "mountaineering" to the top of the mound.

On 10th February, we arranged for George Pidgeon, a member of the Blackdown Hills Hedge Association, to hold a hedge laying training day for 13 local trainees. The team worked hard all day and completed the laying of the hedge alongside the Wild Play area, which now looks splendid. Thanks everyone!

The Ash tree has now been pruned as recommended by the Arboriculture Consultant and we will be using the trimmings for dead hedging and habitat piles.

The snowdrop show has been beautiful again this year and the daffodils have followed, which is a cheerful reminder that spring is on the way. The wrens have



Neroche Volunteers and our new steps

been taking advantage of the various habitat piles to start nesting. See if you can spot any dashing in and out as they choose their nest sites, apparently oblivious to all the human visitors.

Thanks to all our volunteers for helping us keep the Meade maintained for all to enjoy. We are lucky to have such good support from them and of course from the Friends of the Meade, without whom we could not keep going. At some point soon we plan to hold a volunteer session when we hope that people will join us to carry out tasks such as bramble bashing, trimming the inner hedges, spreading chippings, cleaning the signs and clearing the path edges. Watch out for posters in due course.

Dates for your diaries:

Our AGM will be held on **Tuesday 23rd May at 7.30pm** in the Village Hall.
Come along to the Meade on **Saturday 24th June** to celebrate our Silver Anniversary with a picnic and musical entertainment All welcome!

Lynn Osborne, Chair,
Combe St. Nicholas Parochial Trust.
Tel: 01460 6215 Email: lynnosborne99@gmail.com

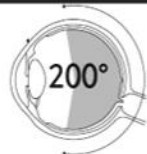


ROBERT FRITH OPTOMETRISTS

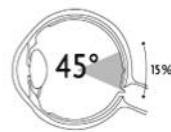
**Experienced optometrists delivering outstanding eye care
in a relaxed and friendly environment.**

**A wide range of products and services including tailor-made
spectacle frames and lenses, emergency eye care and the
latest in 3D eye scanning technology.**

**Introducing the New optomap
ultra-wide field retinal imaging
technology, giving us a comprehensive
view of your eye health**



with optomap ultra-widefield
retinal imaging



without optomap

18 Fore Street, Chard

01460 67771

We are happy to collect any unwanted glasses for us to use in our eye testing work in Kenya.

HOBBS **Electrical Contractors Ltd**



*Commercial * Domestic * Industrial*

Electrical Installation
Rewires, new builds & renovations
Maintenance & Repairs
Inspection & Testing, Portable Appliance Testing

01460 712320

Est 1987

Kathy Arnold Therapies **REFLEXOLOGY, INDIAN HEAD** **MASSAGE, AROMATHERAPY** **MASSAGE, HOPI EAR CANDLES**

Now available in Buckland St. Mary
Please call Kathy on 01460 234693
for information or appointment or visit
www.kathyarnoldtherapies.co.uk



TGF **PLASTERING**

Call us on **07717 413239**

Quick, Clean and Professional Service

All Aspects Undertaken



Find us on Facebook

Loads of Logs

*Local Sustainable Firewood Logs
generated from fellings & thinnings
from the Cotley Estate.*



- Seasoned dry wood ready to burn.
- Trailer and bucket loads delivered (locally) to you.
- Bags of kindling & firewood available now.
- Active replanting programme.
- Active management of woods to promote biodiversity.

Please ring Tom on 01460 239390

Combe St. Nicholas Parish Council

The 2nd **Speed Indicator Device** will hopefully be/has been erected shortly at Chardleigh Green. Even when not visibly showing the speed of vehicles they will still be recording that data. Hopefully the speed of vehicles will be kept down to safer levels. Thanks extended to everyone involved for their help.

The Community Resilience Group is still holding regular Meetings and a plan will be published as soon as is possible so that all residents are aware of what to do should any emergency occur in the Parish and where help can be obtained. Some refillable 'flood bags' have been distributed to premises previously flooded. A grant has been agreed from 'Somerset Prepared' to purchase various items in readiness for any future occasion, but hopefully that will be very rare.

If you notice any drains that are covered in leaves/debris and it is safe to do so, please scoop them off on to the run-off side to help any rain water freely drain away from roads. If too blocked inside then you can report a blocked drain to **www.travelsomerset.co.uk** then click 'Drive' and then 'report road problems' and/or let me know too so info. known. Any overgrown hedges or trees over hanging the highway need to be trimmed back for visibility, and all arisings cleared away - not left in ditches or in a position to block drains.

The Parish Council would like to hear from any painters who would be interested in carrying out a few jobs, i.e. telephone box, Victorian lamp-post on The Green, notice board, etc.

The next Parish Council meetings will be held on Monday 24rd April and 22nd May. 7.30pm in the Village Hall.

Anne Hunt – Parish Clerk, Tel. 01460 61296
combestnicholaspc@gmail.com website – www.combestnicholas.org.uk

Weather watch – local rainfall report



Period	2023 Actual	2022 Actual	10 Yr Ave 2003-2012	10 Yr Ave 2013-2022
January	158	45	112	127
February	6	80	73	125
TOTAL	164	125	185	252

All measurements in millimetres 25mm = 1" = 45 gallons/sq yard

The year started with some very wet weather in contrast to 2022. However, February - historically known in some parts of the UK as 'Filldyke February' - was a much drier month. With rain on only 6 days producing just 6mm, this was the **lowest total** ever recorded in this locality since reporting began in 1987.



AYLOR SWEEPS

Chimney Sweep and Stove Installer
07814 594 421



All types of chimneys and flues swept
OFTEC registered stove installer
Certificates issued
Creosote removal treatment service

Maintenance/Service work completed
CCTV inspections
Birds nests removed
Cows supplied & fitted

Web: taylorsweeps.co.uk
Email: achimneysweep@mail.com

Ben's Carpet and Upholstery Cleaning

Trading Standards approved.
Professional,
courteous, reliable.
Discount for OAPs.



Please call
01460 239837
or
07729 365846

benscarpetcleaning@hotmail.com

Combe Dingle Plant Nursery

We invite you to come
and take a look...

**Interesting herbaceous
perennials
Vegetable plants and
Bedding**

Opening Hours:
Weekdays 9am - 4.30pm
CLOSED WEDNESDAYS
Sunday 10am - 1pm

**Combe Dingle Farm,
Street Ash**

Tel: 01460 234660

The Village Shop - Paper & Magazine Delivery

Over many years the people of Combe have been able to access daily newspaper deliveries through The Village Shop. Not only has this provided a useful service, but also an opportunity to some of our youngsters to bolster their pocket money by doing a paper round.

Unfortunately, numbers have recently dropped on all of our rounds, mainly due to bereavements, and this is putting our service in jeopardy due to costs. Unless we can balance the cost of the paper boys/girls with income from paper and magazine sales (plus the small delivery charge of 30p per day, Mon to Sat and 35p Sunday), then we may have to discontinue our paper delivery service.

Although the shop is in the centre of the village, not everyone can pop in for a paper. Those living in Combe who find it difficult to get around really value this service as it enables them to keep on touch with what's going on in the world, and would feel lost without their favourite daily newspaper.

This is not about making more profit – we simply want to make sure that we deliver enough papers and magazines to cover our costs – and give a small job opportunity those boys and girls who don't mind getting up early and going out in all weathers. So, if you would like the convenience of a daily paper delivery (and help safeguard the pocket money supplement for our valiant youngsters), please come and see us in the shop – or give us a call on **01460 62138**

Ilminster Ukulele Club

performing one of their much-loved shows

on 10th June starting at 7:30pm in Combe Village Hall

PLUS

THE MERCHANT MEN

5 good looking young lads who really can sing a sea shanty.

What a great show it's going to be, so don't miss it!

Ticket info a bit nearer the date but please put it in your diary NOW!

All in aid of the Combe St Nicholas Village Hall Roof Fund



Succulent Interiors

Bespoke succulent arrangements
available & to order.

Plus a stunning range of indoor pots,
planters, vases & plant theme prints,
cards & stationery
for your home & as gifts

Free local delivery
or collection from Combe
Card, cash & BACS payments accepted

Like to view and choose at home?
Contact us for an appointment.

07957 323833

Email: sally@succulentinteriors.co.uk

Website: www.succulentinteriors.co.uk

Instagram & Facebook: Succulent Interiors

Please follow, like & share - we value your support



Pole Rue Farm

Holiday Cottages

With a Llama Landscape
in Combe St. Nicholas

2 beautiful self-catering cottages

★★ Open All Year ★★

www.poleruefarm.co.uk

(01460) 238542

ASHCULME

07815146343
info@ashculme.co.uk

NPTC

Part of the City & Guilds Group

**QUALIFIED
WORKFORCE**

ALL TREE WORK UNDERTAKEN

- *Removals / Crown Reductions & Lifting / Deadwooding & More*

STUMP REMOVAL

GARDEN CLEARANCE WORK

LANDSCAPING

HEDGE REMOVAL & MAINTENANCE

Residential & Commercial
work undertaken by our
fully insured & qualified
workforce

Emergency Call Outs 24/7 - Paul Durman - 07815146343

The future of bell ringing in Combe St Nicholas is in your hands!

Combe has a fine ring of bells, which are currently rung most Sunday mornings and on special occasions such as weddings, but you may have noticed that we rarely manage to ring all 6 bells these days. If the bells are to continue to sound, we need more ringers.

No special skill or strength is required: anyone between about 12 and 70 can learn. It isn't an enormous commitment, either. Many ringers just come to practice nights (1½ hours a week) and ring for Sunday services (½ hour), though enthusiasts always find plenty of opportunities for more, for example outings and ringing at other towers. And unlike most things in life, it's free – we even get paid to ring for weddings!

You will be providing a service to the community by learning and practising this ancient art, and you will also have a lot of fun. Bell ringing is a fantastic hobby. It is also a skill which is recognised by the Duke of Edinburgh Award scheme, and can be used to achieve guiding / scouting badges.

If you are interested in learning to ring, please contact our Tower Captain, Lynne Smith, on **07765 187099** or email **lynnerensmith@me.com**.



Combe St Nichols PFA - Combe 10K

We are running our challenging 10k run alongside the 5km and 2km Fun Run on **14th May** this year. To enter visit our website **www.combe10k.org.uk** or email **combe10k@gmail.com** for more information.



NEW START TIME AND ORDER FOR RACES:

10K - COMMENCING AT 10.15 am

5K - COMMENCING AT 10.20 am

2K - COMMENCING AT 10.25 am

We are looking forward to many entrants, but most importantly we need about 50 volunteers on the day to assist with jobs from marshalling the route, taking the entries and race-timing to helping with catering. If you would like to be involved please get in touch as soon as possible. There's a volunteer list in the school office where you can sign up or email us at **combe10k@gmail.com**. Thank you.



Walkies, playdays or holidays-at-home. Forest and beach walks, plus a secure 1.5 acre paddock on site. Based in Combe St. Nicholas. References available.

Prices from just £15

lornadogzpal@gmail.com

DOGZPAL 01460 929193 or 07703 471911



WAYNE M LEWIS
GARDEN SERVICES
01460 54034 / 07968397648

Pest Control Services



Fast Response
Commercial
Domestic

07730561506
Covering Devon/Somerset/Dorset

Smyth Pest Control Services



www.smythpestcontrol.co.uk

Wasps, rodents, birds, moles & insects all covered



Painting
Decorating
Timber Window Conservation

f R. Barrett Decorating Services

Tel: 01460 259744 Mob: 07759 177029

www.timberwindowconservation.co.uk

professional – reliable – efficient

Combe CofE VA Primary School

This term our school project has been 'World of Work'. There has been lots of science learning and visits from parents and grandparents who have come to talk to the children about the jobs that they do.

The project will culminate with a STEM fair, to which we have invited judges and local schools.

Two members of our school staff are undergoing treatment for serious illnesses. This has been a challenge for them and for the school more widely. We are very grateful for the ways in which our parents and community have offered their support.

We will be celebrating Easter with a service in church at 9.30am on 31st March. Please do join us.

Next term, our project is 'Gardens'. If you are able to support the children in any way for that project, do please get in touch.

Christine Maxwell and the Combe School Team



The children in Foxes, Y1, have all measured string and doweling accurately, used a saw and assembled a pulley to raise a basket. They will draw on this knowledge to create their own models.



We would like to thank Mr Hoare for helping Foxes to learn about levers. The children learned about the effects of the different positioning of the pivot.

Domestic Electrical & Property Services

All aspects of domestic electrical work undertaken

- Testing and inspection
- Commercial installations
- Part 'P' registered electrician
- Property maintenance
- Mechanical maintenance
- CCTV & Intruder Detection, Installation, Service & Repair

☒ Fully Qualified ☒ Fully Insured ☒ Warranty Available

All work considered throughout the South West

For a Reliable, Honest & Efficient Service

Please Call John on:

07525 782 678

01460 54583

Or e-mail: JohnnyKay@talktalk.net

Special rates as new in business



Stuart Weech Joinery

Bespoke,
made to measure
joinery items.

*Hardwood windows,
doors, gates and all other
joinery items considered.*

For a quote call:

07786061475

Email: swjoinery1@hotmail.com

Lodge House B&B

Buckland St Mary, Chard,
Somerset TA20 3TA

Tel: 01460 455455

www.lodgehousebandbsomerset.co.uk

www.facebook.com/LodgeHouseBandB

Hosted by Neil and Kathy Arnold

Country Fare Catering

Caterers for
celebrations
of all types



Hot & Cold
Buffets or
sit down meals

We use fresh local ingredients

For more information call

01460 66743 or 07450 829169

Or email te.margetts19@gmail.com

I'm A WINNER!



The February and March 2023 draws of the new Village Hall Lottery took place during the recent Village Hall Film Nights; we are very pleased to announce the lucky prize winners are:-

Feb 1st Place is Catherine Corfield.

March 1st Place is Patrick Stenning

Feb 2nd Place is Liz Nichols.

March 2nd Place is Ian Croucher

Feb 3rd Place is Sue Millington.

March 3rd Place is Colette Boyle

A very BIG CONGRATULATIONS to our winners and an even bigger THANK YOU for all of you for your support, with over 84 Numbers to be drawn each month now, so the prize pot is going up and up.

If you haven't joined in to help raise money for your village hall, then please call Ian on **01460 64098** or email **csnvillagehall@hotmail.com** to get your application form, then you too can start joining in the fun and you could become a WINNER! as well.

St Nicholas Church Coffee Mornings



Saturday 8th April 2023 & Saturday 13th May 2023

10 am – 12.00 noon

Table top sale, produce, raffle

Why not come have a cuppa and pick up a bargain.

WANTED

WANTED

WANTED

YOUR CAR OR VAN

Before you part exchange or sell your car why not give me call for a price ?

Tel Martin on 07515 896095

Email: martin@combevillagecars.co.uk

Combe Village Cars

Buyers and Suppliers of Quality Vehicles

April

Sun	2		See Church Services
Mon	3	10am & 2pm	World Circle Dance - Village Hall
Wed	5	7pm-9.30pm	Short Mat Bowls - Village Hall
Thu	6	7.30pm	Folk Dance Club - Village Hall
Fri	7	2pm-4pm	Short Mat Bowls - Village Hall
		6.30pm	Film Night - Village Hall
Sat	8	10-12noon	Coffee Morning - Combe Church
Sun	9	Easter Sunday	See Church Services
Mon	10	10am & 2pm	World Circle Dance - Village Hall
Wed	12	7pm-9.30pm	Short Mat Bowls - Village Hall
Fri	14	10.00am	Art Group - Village Hall
		2pm-4pm	Short Mat Bowls - Village Hall
Sun	16		See Church Services
Mon	17	10am & 2pm	World Circle Dance - Village Hall
		7.30pm	Combe Community Group - Village Hall
Wed	19	2.30pm	Women's Fellowship - Methodist Rooms
		7pm-9.30pm	Short Mat Bowls - Village Hall
Thu	20	7.30pm	Combe Folk Dance Club - Village Hall
Fri	21	10.00am	Art Group - Village Hall
		2pm-4pm	Short Mat Bowls - Village Hall
Sun	23		See Church Services
Mon	24	10am & 2pm	World Circle Dance - Village Hall
		7.30pm	Combe Parish Council - Village Hall
Wed	26	7pm-9.30pm	Short Mat Bowls - Village Hall
Fri	28	10.00am	Art Group - Village Hall
		2pm-4pm	Short Mat Bowls - Village Hall
Sat	29	10am-11am	Combe Duplo & Duplo Club - Methodist Rooms
Sun	30		See Church Services
		12-2pm	Combe Café Sunday Lunches - Village Hall

your diary

May

Wed	3	7pm-9.30pm	Short Mat Bowls - Village Hall
Thu	4	7.30pm	Combe Folk Dance Club - Village Hall
Fri	5	10.00am	Art Group - Village Hall
		2pm-4pm	Short Mat Bowls - Village Hall
		6.30 for 7.00pm	Film Night - Village Hall
Sat	6		King Charles III Coronation
Sun	7		See Church Services
			Coronation BIG Lunch
		2pm-4pm	Wadeford Charity Book Sale - Village Hall
			Coronation Concert - Village Hall
Mon	8		The BIG Help
Wed	10	7pm-9.30pm	Short Mat Bowls - Village Hall
Fri	12	10am-12noon	Art Group - Village Hall
		2pm-4pm	Short Mat Bowls - Village Hall
Sat	13	10am-12.30pm & 2-4.30pm	Flower Arranging Workshop - Village Hall
		10-12noon	Coffee Morning - Combe Church
		6.30pm	Oh Love Summer Concert - Combe Church
Sun	14		See Church Services
		10am onwards	Combe 10K, 5K 7 2K Fun Run - Combe School
		2pm-4pm (last entry 3.30)	Wadeford Charity Book Sale - Village Hall
Mon	15	10am & 2pm	World Circle Dance - Village Hall
		7.30pm	Combe Community Group - Village Hall
Wed	17	2.30pm	Women's Fellowship - Methodist Rooms
		7pm-9.30pm	Short Mat Bowls - Village Hall
Thu	18	7.30pm	Combe Folk Dance Club - Village Hall
Fri	19	10.00am	Art Group - Village Hall
		2pm-4pm	Short Mat Bowls - Village Hall
Sun	21		See Church Services
Mon	22	7.30pm	Combe Parish Council - Village Hall
Tue	23	7.30pm	Underway Meade AGM - Village Hall
Wed	24	3-4.00pm	Village Hall AGM - Village Hall
		7pm-9.30pm	Short Mat Bowls - Village Hall
Thu	25	7.30pm	Combe Folk Dance Club - Village Hall
Fri	26	2pm-4pm	Short Mat Bowls - Village Hall
Sat	27	10 - 11am	Combe Duplo & Lego Club - Methodist Rooms
Sun	28		See Church Services
		12-2pm	Combe Café Sunday Lunches - Village Hall
Mon	29	10am & 2pm	World Circle Dance - Village Hall
Wed	31	7pm-9.30pm	Short Mat Bowls - Village Hall

Local Handyman

25 years experience



- * Quality, professional work
- * Trustworthy and reliable
- * All types of home maintenance
- * Tiling
- * Wooden and laminate flooring
- * Kitchen and bathroom fitting
- * References available – DBS checked

**Fair prices and
excellent service guaranteed.**
Call Paul on 07894032119

CHIROPODIST/ PODIATRIST

STEPHEN WAPLINGTON

MSSCh, MBChA
HPC Registered

**EXPERT FOOTCARE
IN YOUR OWN HOME
AT NO EXTRA COST**

*For friendly and professional
treatment please call:*

01308 456724



Rapid-Print

**On the Blackdowns
Nr Chard • TA20 3HX
T: 01460 234 100
E: neil-wells@btconnect.com**

DESIGN, ARTWORK & PRINTING

**Full Colour or One
MAGAZINES • POSTERS
ADVERTISING LEAFLETS
GREETINGS CARDS
BUSINESS CARDS
COMPLIMENT SLIPS
LETTER HEADS
INVOICE/ORDER FORMS
DELIVERY NOTES
MAIL SHOTS • MENUS
JOB SHEETS / CARDS
BROCHURES • STICKERS
RING or EMAIL FOR A
QUOTE**

At Competitive Prices

**We can
Print from your Office
or PDF's Files**

Sunday School Wood

We finally managed to have our bonfire. The weather was fine, although cold, and we had a Northerly wind. The fire went well, and hopefully did not bother anybody. If it did, very sorry, but it will be a long time before we need another.

The snowdrops have been brilliant again, as have the daffodils. The bluebells are looking very promising, and violets are making a good display. Hopefully, the wood anemones and cowslips will do the same. It is too early to see whether the yellow rattle we sowed in the autumn have germinated. They like to have had a good frost to help this (and we have had plenty of that).

The heavy, protracted rain that we had through the winter resulted in a lot of water getting in the shed. Roof beams were saturated. The nearly flat roof, and various sections sagging badly did not help and it does look as though something will need doing to improve the situation.

We have been donated a correctly made bat box that we still need to install. The current one we have does not get used. We still have to spray weedkiller across Brian's patch before we can rotavate it, but we have a volunteer to do the spraying which means we can use a very effective product, but this has to be done by someone with a license. When all that is done, we have a packet of wild flower seed, donated by South Somerset District Council. We had to apply for that, but fortunately we were successful, so here is hoping for great things.

You may have noticed on entry from the churchyard a very fine new seat. This has been installed by the family of Ken Wheadon, in his memory. It provides a good view of the whole area.

Frank Warriner (67407)

King Charles III Coronation

Village Information



Saturday 6th May - Coronation Day

It is proposed to light a Beacon at the top of Stoooper's Hill in the early evening to celebrate the Coronation of our new King, Charles III.

Sunday 7th May - Concert from Windsor:

In the evening we are planning to put on a 2-course supper and show the big Concert from Windsor Palace. This will be in the Village Hall on our wide screen projector system.

Monday 8th May (Bank Holiday Monday):

The BIG – HELP – OUT

More information on all actual activities, times and locations nearer the time.

Oh Love

An evening of song performed by The Blackdown Voices. They will be joined by the talented local soprano **Josephine Cresswell** who, having studied in such institutions as the Royal Birmingham Conservatoire and the Conservatorio Luigi Cherubini in Italy, has performed works such as *Le Nozze de Figaro* and *The Merry Wives of Windsor*.

The choir and Josephine will be performing a range of songs from classical to pop, featuring works by composers such as Billy Joel, John Rutter, Eleonor Hagenburg, Bob Chilcott and many others.

6:30 pm Saturday 13 May 2023

St Nicholas Parish Church, Combe St Nicholas TA20 3NG

Blackdown Voices **Penny Hart Music Director**

Josephine Cresswell **Solo Soprano**

Chris Knight **Accompaniment**

Tickets £10, Children under 12 Free

Available from Barron's of Chard, 2 Holyrood Street, Chard
Churchingford Community Shop, TA3 7DJ

Jane Harris 01460 239113, janeharris334@gmail.com or on the door.

There will be a raffle and wine available with donations towards
the Church Fabric Fund including roof repairs

Better Balance and Posture Classes for seniors

What to expect: Very simple and small exercises performed standing up using a chair to aid balance and safety. Some exercises will also be performed in the chair. The idea is to work with your own gravity and body rather than using equipment as to promote independence.

Where and when:

Chard Methodist Church

Tuesdays at 10am for 40 minutes.

Fore St, Chard TA20 1PT

Broadway Methodist Church

Mondays at 10:30am for 40 minutes.

Pound Rd, Ilminster TA19 9QU

£5 PAYG

Please email for a more in depth understanding on what we are trying to accomplish.

1-1 sessions & small groups of 3 also available online or in person.

E: betterbalanceandposture@gmail.com T: 07470079498

Clubs and Societies

Combe St. Nicholas Women's Fellowship is held in the Methodist Church rooms on the third Wednesday of each month at 2.30 p.m.

The group was started by Mrs Phyllis Pierpoint, who lived at 1 George Barton, in 1970. This group is open to ladies of all faiths and none. No subscription is required.

Each month the fellowship starts with hymns and prayers followed by a speaker on a variety of subjects. Tea and cake and biscuits follow and there is a sales table to raise funds for whichever charity the group decide to support. On the first Wednesday of the month there is a coffee morning from 10.30 to 11.15am open to all where more fellowship takes place. In the June and July months an outing and a garden meeting are arranged.

Sadly during the last year we have lost four of our valued members. So if any lady in the village or locally is interested in joining us please contact one of the Joint Presidents:

Liz Nichols 01460 63498 or Sylvia Hopkins 01460 62153.

Combe Community Group

Yvonne Froehlich gave a very interesting demonstration and talk about Jewellery techniques - what an amazing amount of work involved, but beautiful results.

In March a quick AGM followed by talk and slides by our current Chairman, Lynn Osborne, on her visit to Antarctica, featuring penguins, seals and whales. As this report is being typed prior to the AGM any decisions taken will be in the next Cloverleaf.

Monday 17th April. David Usher, ex head gardener presents an Illustrated talk on Hestercombe Gardens.

If you would like to see the Dawe's Rope and Twine Works at West Coker we have arranged a visit **for Monday 15th May**. Own transport but maybe share lifts where possible. Location – A.30 at West Coker Meet there at 2.15pm The tour takes an hour or maybe two – Teas on site if required. Ross Aitken did give a talk about the Rope Works at a Combe History Group meeting back in 2018 but now we can see the real thing as the renovations of the site are now complete. Cost: it is actually free but donations needed, so we suggest at least £5 each There is a good site on Google if you would like to see more about it.

Everyone welcome, but numbers maybe limited so please contact:-

Lynn (62015) email lynnosborne99@gmail.com

or Anne (61296) email annehunt1909@btinternet.com

STEPHEN MELLING

Painter & Decorator

Wootton House, Underway,
Combe St Nicholas, Chard
Somerset, TA20 3NY

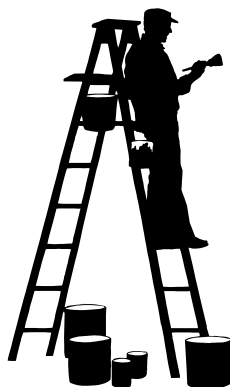
Tel: 01460 64353

40 YEARS EXPERIENCE IN THIS AREA

- Quick Response to Enquiries
- Detailed Estimates, Rapidly Despatched
- High Quality Workmanship and Attention to Detail
- Giving You the Confidence and Security for all your Internal and External Decorative Work

Also

**TILING - GUTTERING - TIMBER REPLACEMENT
GENERAL HOUSEHOLD MAINTENANCE**



Arboricare Ltd

The cutting edge of tree care.

- | | |
|-------------------|-------------------|
| ✓ Surveys/Reports | ✓ Pollarding |
| ✓ Planting | ✓ Crown Reshaping |
| ✓ Pruning | ✓ Thinning |
| ✓ Felling | ✓ Stumpgrinding |
| ✓ Fully Insured | |

Approved Contractor of the Arboricultural Association

- | | |
|------------------|---------------------|
| ✓ 24 Hr Call Out | ✓ Estate Management |
|------------------|---------------------|

Covering The South West

T: 01823 462972 M: 07831 108445

E: arboricare1988@gmail.com W: www.arboricare.co.uk
New Rendy Farm, Oake, Taunton, Somerset TA4 1BB





Yarcombe and District YFC

February has certainly not been a quiet month for the Young Farmers, continuing to have meetings in halls discussing upcoming events.

Also, members have been busy getting organised for the tractor run and other events.

On 31st January members played against Honiton YFC in pub sports taking part in pool, darts and skittles. We won the pool and the darts. More games coming up against other clubs soon.

On Monday 27th February to begin our meeting we had members from Blackdown Farm Vets come to talk to us about 'The changing role of the farm vet'. This was a very informative talk, a massive thank you to them for attending.

We have received a thank you letter from Yarcombe Church thanking our members for helping with the churchyard tidy up on Saturday 18th February. Thank you to Dan and Rob for going to help out. It is very much appreciated.

On Sunday 12th February we had our entertains re-run. A massive well done to all those who took part in the entertains re-run and the extra entertainment Thank you to everyone who helped out on the day serving tea and cakes etc. We have raised £654.76 for our chosen charity, Hospiscare.

Sunday 26th February, we had our charity tractor run. We started and finished at Stopgate by kind permission of the Barnes family. Thank you to everyone that helped out on the day including Complete Meats for supplying the food, Buglers and Hamblys for supplying the Dynos. The event could not have run as smoothly without everyone's help. Over 100 tractors attended. We have raised around £3,159 for Hospiscare, for which we are all very proud - well done Yarcombe YFC!

We have our pub of the month coming up on Friday 17th March at the York inn. Everyone is welcome and it will be great to see lots there. There will also be a live music. Yarcombe YFC have a UV barn disco coming up on Friday 14th April. Some of our over 18 members have been to Weymouth for SWA. Everyone that went the weekend had a great time.

If anyone has any further questions and would like to become involved with Young Farmers, please contact our Chairman Will Vining on 07850 605542. We have our club meetings every other week in either Yarcombe or Upottery Village Hall 8pm start.

Chloe Webber
Press Secretary

**Keep in touch with the NEW Combe village website -
visit www.combestnicholas.org.uk**



Auxilia Financial Services

Award winning, trusted and reliable local Mortgage advice based in Broadway, Somerset. With over 50 mortgage lenders including High Street names, we'll find the right mortgage & protection for you and your family.

- | | |
|----------------------------------------------------------|----------------------------------------------------------------|
| <input checked="" type="checkbox"/> First Time Buyer | <input checked="" type="checkbox"/> Life Insurance |
| <input checked="" type="checkbox"/> Moving Home | <input checked="" type="checkbox"/> Serious & Critical Illness |
| <input checked="" type="checkbox"/> Remortgaging | <input checked="" type="checkbox"/> Income Protection |
| <input checked="" type="checkbox"/> Buy to Let | <input checked="" type="checkbox"/> Building Insurance |
| <input checked="" type="checkbox"/> Bad Credit Mortgages | <input checked="" type="checkbox"/> Contents Insurance |

☎ 07810 068987 ✉ ben@auxiliafs.com 🌐 www.auxiliafs.com

Your property may be repossessed if you do not keep up repayments on your mortgage or any of other debt secured on it.

Auxilia Financial Services is a trading style of Benjamin Mark Small which is an appointed representative of The Openwork Partnership, a trading style of Openwork Limited which is authorised and regulated by the Financial Conduct Authority



CHIROPODIST PODIATRIST

Christian Grimminger
SRCh DPodM MRCPod

**Professional, Experienced
& Caring**

Essex House Medical Centre, Chard
01460 30114

Tawstock Medical Centre, Chard
01460 30114

The Linenyard Practice, Crewkerne
01460 78068

Home visits: 01460 30114



Potting Shed Café

Open daily

**NOW'S THE TIME TO ADD
COLOUR WITH
SUMMER BEDDING**

**RE-FILL POTS &
HANGING BASKETS
OR**

BRING THEM TO US TO RE-FILL

Chard Garden Centre

Cuttifords Door, Chard
01460 63088

*Your local Garden Centre -
that just keeps growing!*

Combe Football Club



The football club has had a very quiet winter with various cancellations due to frozen or waterlogged pitches. With less games than usual being played however, the pitches are now in fine condition for the second half of the season!

The Ladies have actually just finished their season this week, coming third in the Somerset Women's League Division 2 South league. This is a fantastic finish when last season we were struggling for players. With the success of the Lionesses in the Euro 2022 win, women's football has taken great strides across the country, with women in the local area wanting to get more involved and joining us. Regardless of your experience or ability, if you have any interest in trying out something new or being part of a great group, come and see what it's all about!

Off the pitch, we are looking to host you for any upcoming events you may have! I have recently met a few local villagers up the club who have lived in Combe for years, and never visited the club. The resounding response is "wow, I had no idea what a great facility you have here"!

We have a clubhouse with a bar and kitchen, with the best beer garden around! With the upcoming summer months, we could be the place you're looking for to host a summer event. If you have any interest in booking, or any questions, please email combefc@live.co.uk. We hope to see you soon!

Flower Arranging Workshops

A Royal Cottage Garden

Saturday 13 May 2023 10am-12.30pm and 2pm-4.30pm £30

This is so exciting! You are invited to recreate a cottage garden from Highgrove House. Inspired by the private estate of HM The King Charles III, this large and truly magnificent design is pleasing on the eye and in harmony with nature. Don't miss it.

Blooming Lovely

Saturday 10 June 2023 10am-12.30pm and 2pm-4.30pm £30

Foam free and fabulous! Learn how to make two flat-layered country garden bouquets using seasonal flowers, foliage, and foraged materials. Finished with natural fibre bows, this gorgeous duo make perfect gifts and are suitable for any occasion.

All events held at Combe St Nicholas Village Hall. For more workshops and further information contact Jackie Nicholls, Ashville Design on 01460 67795 or 07906 259 683 or email ashvilledesign@outlook.com – www.ashvilledesign.co.uk – www.facebook.com/ashvilledesign

GORDON SUGGETT & DAUGHTER

INDUSTRIAL DOMESTIC ELECTRICAL CONTRACTOR



GORDON

07752 239083

LUCY

07885 629884

INSPECTION AND TESTING PAT TESTING
SMALL REPAIRS TO NEW REWIRES
EMERGENCY LIGHTING
DOOR ENTRY CAMERA ALARM SYSTEMS
PRE HOUSE BUYING INSPECTIONS
ESTIMATES FREE



COMBE WOOD COMPUTERS

Computer & Laptop,
Repairs and Upgrades
Website Design & Digital Marketing

☎ 0146067794 / 07984419755

🌐 www.combewoodcomputers.co.uk

✉ dave@combewoodcomputers.co.uk



F.R. Veale

*Painter
and
Decorator*



Fully insured

**Call Francis
on 01460 68423**



B D E fabrications

Architectural Metalwork Specialists

- ❖ Staircases ❖ Gates & Railings
- ❖ Balustrading ❖ Glass & Stainless
- ❖ Historic & Antique ❖ Structural Steels
- ❖ General Engineering, Welding & Fabrication

Clive Woods

Tel: 07818 033040

Email: info@bdefabs.co.uk

www.bdefabrications.co.uk

D. ELWOOD

Landscaping & Garden Maintenance

- Paving ● Fencing ● Decking
- Walling ● Turfing
- Grass Cutting ● Hedge Cutting

For all enquiries please contact

07849 790519

A Moment in Time... with John Phillips

Arthur Hull in his *History of Chard* (1859) gives an account of the discovery of human bones at Snowdon Hill "At Snowdon Turnpike Gate there is the angle of two roads one ... to Wambrook and the other to Whitestaunton between which formerly there was one field called Hanging Wood, or Hanging Down." During the road improvements of 1827 "many human remains were found, of which the skulls and teeth are remarkably perfect, as if belonging to people cut off in the vigour of life". After the sentence was carried out, in public, on the hanging ground the body was often displayed in a gibbet or chains as a dreadful deterrent to all those passing on the main route from Chard to Exeter. They were usually buried in unconsecrated ground nearby. However, a few received a Christian burial. The Chard churchwardens record in 1665 show the receipt of £1 "for ye burial of Mr Bankes of Yeovell in ye church, who was hanged here at Snowdowne ye last assizes".

It is possible that amongst the bones unearthed in 1827 were those of a "master Babb" from Wambrook. He was sentenced to be hung in 1613 for the brutal murder of a widow living near Taunton who twice refused his proposal of marriage. The second time vigorously striking him with a pewter candlestick as he had surprised her by hiding in her brewhouse (stalkers are not a modern phenomenon). The investigating magistrate Mr Warre of Hestercombe House held the common belief "that if a murderer touched the corpse of his victim, blood would immediately flow from the wound", therefore had the body disinterred so that all the inhabitants within 3 miles might assemble and touch the body. No blood flowed. Later Master Babb gave himself up and was hung at Snowdowne.

The Kings or Queens judges arrived in assize towns with great pomp and ceremony. The sheriff of the county was duty bound to attend to their considerable needs. By the 1600's the sheriff had lost his ????? responsibilities to the county Lord Lieutenant and his judicial supremacy to the assize judges and the Justices of the Peace. The post was an expensive honour. Henry Bonner of Weston in C.S.N, an extremely wealthy clothier was sheriff in 1660. He had to provide the judges with 11 gallons of sack (white wine) costing almost £2 as a personal gift. With the requirements of more 'sack' and claret, dozens of pigeons, larks, oysters, ducks, chickens as well as prodigious quantities of mutton and beef, attendance on judges was not cheap!

The churchwardens of Chard also had expenses. In 1660 2/9d (14p) was paid to the bell ringers "when the Judges came into Towne". A further 1/- (5p) was paid to "John Soper for a rope to hang a malefactor". But the income from provisional stabling and accommodation of all those attending the court was tremendous.

The hanging field was busy again 20 years after the last Chard Assizes following the catastrophic impact of Monmouth's Rebellion and Judge Jeffries visitation thereafter on our 3 parishes and all those around.

Eleighwater House Retirement Home

Chard, Somerset.

Wonderful Relaxed Family Care Home.

Offering 8 single en-suite rooms.

First Class Care, Excellent Home Cooked Food

Registered with the CQC

www.eleighwaterhouse.co.uk

www.carehome.co.uk for recommendations

01460 67532

**FABRICS •
CURTAINS • LOOSE
COVERS • UPHOLSTERY**
CUSHION/SRING REPLACEMENT/REPAIR
*Combine your ideas with our
inspiration to create the
professional effect you
desire from our own
workshop in
Chard.*

We come to you for:
**FREE QUOTATION & ADVICE/
PATTERN SELECTION, ETC.**

RED HOUSE FURNISHINGS
CHARD-01460-
220110

E & S COMPUTERS

**Unit 27, Ilton Business Park,
Ilton, Somerset, TA19 9DU**

Desktop/Laptop Repairs & Upgrades
Custom Built PCs
Epson Express Centre

Ink Cartridges & Paper - Keyboards - Mice
Printers - Webcams - Cables - Routers
Wireless Adapters - Internet Security
And much more!



Give us a call on

01460 259999

or come & see us.



Email: enquiries@enscomputers.com

Website: www.enscomputers.com

Online Shop: www.enscomputers.co.uk

Established 2007

'Morpeth'

Comfortable, well-furnished
holiday cottage,
centre of Combe St. Nicholas

Sleeps 6 - available all year

Enquiries/bookings **01367 710445**

Email: rarapacker@gmail.com

www.little-white-house.co.uk

Duncan Pavey Carpenter & Joiner

20 yrs Experience

❖ Specialist Installer of Kitchens,
Bedrooms & Bathrooms

❖ Home Improvements ❖ Tiling

❖ Flooring ❖ Domestic Plumbing

T: 01460 63127 M: 07786 374 528

E: duncanpavey@gmail.com

Cloverleaf Parish Pages

Vicar's Letter

Because I have had some time to relax, I watched a programme, light entertainment, where someone appears at the Royal Drury Lane Theatre London as an unexpected star of the show. The person is nominated for their contribution to the communities life. You may have seen it yourself where a lady called Ann who has been blind from birth would go and sing in her front garden, during Covid, a beautiful voice too, for the benefit of her neighbours. She has been brought to, as she thought, record a podcast with Anita Rani who asked who she would most like to meet, her reply Bryn Terfel. He is a Welsh Baritone Opera Singer. Later she was not only surprised to find she was on Michael McIntyre's show, but Ann was able to sing with her all-time favourite Bryn. It was an emotional moment to say the least, little had Ann expected what was going to happen, and will remember it forever.

Pondering on it I began thinking about how the whole experience meant Ann being surprised by life and living the unexpected, her face was radiant.

Easter will be with us early in April, and as my thoughts turn to preparation and moving as we do through this journey of Lent, there is an air of expectation, and for me, as I hope others of you, a hope that I may be surprised in my Easter experience this year by God.

Each year we hear of the joy of the Resurrection, whilst remembering the anguish which comes before with the Crucifixion story, actually, we don't know or even need to understand it all, there have to be some things that remain a mystery, that aren't revealed to us or understood straight away in our understanding. It gives us whether we want it or not, the element of the unknown in our lives, with expectation, hope, often amidst despair, a space to be surprised by creation, those around us, and by God as we continue to gather the story which is part of our inward and outward journey. May God bless you this Easter in the mystery.

Rev Georgina

Bishops Funeral Services

An Independent Family Owned Business
Associated with Local Funerals
for over 130 years

**PRIVATE CHAPEL OF REST
BLACK DAIMLER CORTÈGE**

Proprietor : Deirdre E. Cargen



Tel : 01460 66909 Fax : 01460 66580

**Email : bishops.funeralservices@btconnect.com
CILLERHAYES, OLD TOWN, CHARD, SOMERSET TA20 2AS**

A J Wakely & Sons

A Private Independent Family Funeral Directors
- 24 Hour Service -



Private Chapels of Rest

www.ajwakely.com

Golden Charter
Funeral Plans 



**7 West Street, Ilminster Tel: 01460 52576
45 Holyrood Street, Chard Tel: 01460 67900**

Please contact a member of our dedicated caring team for any advice or guidance.

Whitestaunton Church What's On

All Welcome to Join Us!

Fun Family Bingo

With Easter Egg Prizes and Raffle

Tea and Coffee

Saturday 1 April— Doors Open at 7pm, Eyes down 7.30pm

Reflections on The Cross

Followed by Tea/Coffee and Hot Cross Buns

- Friday 7 April at 9.15am



Easter Day Holy Communion

With the Church Choir

- Sunday 9 April 9.15am



All Age Spring Service

- Sunday 16 April 10.30am

Holy Communion

- Sunday 30 April 10.30am

Summer Concert - Saturday 13 May 6.30pm

Rogation Sunday Lunchtime Prayers

- Sunday 14 May 1pm

Tea and Coffee available Please BYO lunch

For enquiries about Baptisms, Weddings and Funerals please contact the clergy. If you would like us to visit you or just want a chat please do not hesitate to contact me.

Rev Georgina

FROM THE PARISH REGISTERS

We give thanks for the lives of:

Vera Talbot

Wambrook

Yvonne Butt

Combe

Marian Atkinson

Combe

Church Services across the Benefice

APRIL	Combe	Wambrook	Whitestaunton	Ham	Chard
April 2nd Palm Sunday	10.30am Liturgy of the Palms/ Passion	9.15am BCP MP Cancelled			10.00am Liturgy of the Palms/ Passion
Holy Week	See opposite				
April 9th Easter Sunday	10.30am Holy Communion	06.10am Red Post layby Sunrise Service 9.15am BCP Holy Communion	9.15am CW Holy Communion		8.00am Holy Communion 10.30am Holy Communion
April 16th 1 st of Easter	10.30am Church Anniversary at the Methodist Church	6.00pm Evensong	10.30am Morning Worship	6.00pm Evensong	8.00am Holy Communion 10.00am Breakfast Church
April 23rd 2 nd of Easter	10.30am shortened HC followed by the APCM				10.00am HC 3.00pm St George's Service
April 30th 3 rd of Easter	10.30am Benefice Service at Whitestaunton				10.00am Shortened HC followed by APCM

Wambrook Flowers and Cleaning

Altar Flowers

Cleaning

SATURDAY 1ST APRIL - CLEANING & MAINTENANCE FOR ALL

April 2

LENT

Sue Stocks

SATURDAY 8TH APRIL - ALL DECORATE FOR EASTER

April 9 & 16

Sue Wallace

Lauren Rocket

May 7 & 14

Penny Luther

Wendy Ffyfe

May 21 & June 4

Janie Hurrell

Liz Martin

Church Services across the Benefice

Holy Week	Combe	Wambrook	Whitestaunton	Ham	Chard
ALL SERVICES ARE BENEFICE SERVICES					
Monday of Holy Week				6.30pm Corrymeela HC	
Tuesday of Holy Week					6.30pm Taize Service
Wednesday of Holy Week	6.30pm Iona Holy Communion				9.45am CW Holy Communion
Maundy Thursday	6.00pm Passover Supper				6.00pm Passover Supper
Good Friday	10.00am Family Service 12.00noon Stations of the Cross	2.00pm Reflection for the Final Hour	9.15am Reflection at the Cross with Hot Cross Buns		10.00am CCT Walk of Witness 2.00pm The Final Hour

MAY	Combe	Wambrook	Whitestaunton	Ham	Chard
May 7th 4 th of Easter	10.30am Songs of Praise and Picnic at Combe	9.15am BCP Morning Prayer		6.00pm BCP Evensong	8.00am HC 10.30am @ St Mary's
May 14th 5 th of Easter ROGATION	3.30pm Prayers + Tea	10.30am CW Holy Communion + coffee	1.15pm Prayers + lunch	5.00pm BCP Evensong	8.00am Holy Communion
May 21st 6 th of Easter	10.30am Together at the Parish Church with Bishop Michael	6.00pm BCP Evensong at Ham		6.00pm BCP Evensong	8.00am HC 10.30am Together at Combe
May 28th Pentecost	10.00am Benefice Service at Chard				

BCP Communion: 3rd Wednesday of the month at 10.00am at Combe

Cloverleaf Parishes Information

Clergy contact details:

Rector: Rev'd Ann Kember

The Vicarage, Forton Road, Chard TA20 2HJ

Tel: 01460 351521 Email: annkember58@gmail.com

Associate Rev'd Georgina Vye,

Vicar: The Vicarage, 57 Caraway Close, Chard, TA20 1HP

01460 66159 or 07950 989916 Email: g.vye@btinternet.com

Cloverleaf Churchwardens

St Nicholas, Combe:

Penny Croucher (07780 081081)

Keda Horn (07867 300795),

St Mary's, Wambrook:

Graeme Pidgeon (07807 284738)

Visit the Wambrook website

www.wambrookparishchurch.com

St Andrew's, Whitestaunton:

Jane Harris (PCC Secretary - 239113)

COMBE ST NICHOLAS METHODIST CHURCH

Services: 10.30am fortnightly (as per plan on Noticeboard on railings)

Minister: Rev Anna Flindell (01460 261766)

Steward: Arnold Coleman (64892)

Copy date for June/July issue of Cloverleaf

*Items for Cloverleaf should be e-mailed to csnparishmag@btinternet.com or delivered to **The Village Shop & Post Office, Combe** NO LATER THAN 12noon on **TUESDAY 16th May**. Please note: long articles may have to be edited and inclusion cannot always be guaranteed.*

Distributors: June/July Magazines will be in Combe Church ready for collection after 2.30pm on Friday 26th May.

If you would like to advertise please call **01460 61896** or email csnparishmag@btinternet.com for availability of space and rates.

The inclusion of advertisements in this magazine is not a recommendation or endorsement by the magazine of either the advertisers or their goods or services. Readers must satisfy themselves as to the ability of the advertiser to provide the required standard of product or service.

A.G.M.

Axminster Garden Machinery

• SALES • SERVICE • SPARES •
Independent Specialists



ALWAYS
GREAT DEALS
AVAILABLE



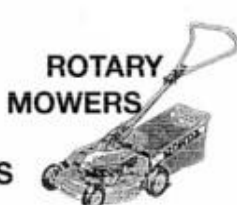
RIDE ON MOWERS



**CYLINDER
MOWERS**



**BRUSH
CUTTERS**



**ROTARY
MOWERS**

ASK US ABOUT

CHAINSAWS, GENERATORS, ROTAVATORS, HEDGE CUTTERS and other Machines

All Parts Extra and Free Collection within 15 mile radius

**CONTACT THE GARDEN MACHINERY SPECIALISTS FOR GREAT DEALS
VISIT OUR LARGE SHOWROOM AND STORES**

**UNIT 1A, WEYCROFT AVENUE, MILLWEY RISE, AXMINSTER EX13 5HU
TELEPHONE: 01297 631186**

www.axminstergardenmachinery.co.uk

B. GIBBS FUNERAL SERVICES LTD.

An independent family business providing
24 hours professional care, personalised planning,
qualified advice and guidance for peace of mind



- Pre-paid Funeral Plans
- Home Visiting Service
- Private Chapel Of Rest

NAFD
Resolve

Chard

The Manse, 28 Fore Street,
Chard, Somerset TA20 1PT

01460 66100

Email: chard@bgibbsfuneralservices.co.uk

Ilminster

25 Silver Street, Ilminster,
Somerset TA19 0DH

01460 929100

Email: ilminster@bgibbsfuneralservices.co.uk

www.bgibbsfuneralservices.co.uk
Proprietor: Mr Barry J. Gibbs Dip FD NAFD

Carrie & Jason welcome you to
HAYMAKER INN

WADEFORD, CHARD, TA20 3AP

01460 64161

Easter Weekend

**BEER &
CIDER
FESTIVAL**



**Come and enjoy our Sunday Roast
1, 2 or 3 courses - Booking essential!**

N.T.HECTOR

ELECTRICAL SERVICES

**ALL ASPECTS OF DOMESTIC ELECTRICAL
INSTALLATIONS AND MAINTENANCE**

- Local, reliable and efficient service
- Over 30 years experience
- Work guaranteed and insured
- Competitive prices and free estimates

CLOVERLEAF COTTAGE, COMBE ST. NICHOLAS, CHARD

Tel: 01460 64449 or 07759 146172