

# *CLOVERLEAF*

*Connecting OUR Communities*



*February - March 2023*



# Barleymow's

FARM SHOP & RESTAURANT

Your local Farm Shop supporting local producers,  
because it tastes better.

¼ mile west of Chard on the A30  
Tel: 01460 62130



POST  
OFFICE

## The Village Shop & Post Office



Open every day

Monday to Friday - 7.30am to 6.00pm

Saturday 7.30am to 5.00pm Sunday 8.00am -1.00pm

- Wide range of Groceries
  - Confectionery ● Beer & Wine ● Household products
  - Fruit & Vegetables ● Dairy ● Coal and Logs
  - Newspapers & Magazines (delivered in Combe)
- PLUS, access to full Post Office and banking facilities!

**Grocery orders taken & delivered**

Call **01460 62138**

**SUPPORT YOUR LOCAL SHOP**

# Overview

It's a bit late, but a Happy New Year to all our readers.

The Christmas and New Year period was delightful for me. I travelled to sunnier climes to see two of my grandchildren for the first time in over 3 years. My, how they've grown!

Coming back to the cold and rain was not pleasant - but I try to console my shivering self with the thought that nature is only replenishing the water table after the Summer drought. The rainfall figures confirm this, showing tremendous downpours in late December and early January. I was glad to miss those and hope the current poor weather improves soon!

When I first began to receive items for this magazine I was worried that we would fall short and end up with empty pages. This was soon rectified and once more I was faced with trying to squeeze the inevitable quart into the pint pot!

Claire from Combe Dingle Nursery is back on page 2 of this issue with plenty of good gardening advice for these wintry times and there's news of some great films coming up at the Village Hall - find out more on page 3.

After only a few months it's Panto time again - oh, yes it is! Cloverleaf Productions are staging their **40th pantomime** on 8th - 11th February. That's some achievement - and at least one member of the cast has probably been in most of them!

We've got news of the latest Village Lottery winners too on page 17 and lots of information from the local clubs and societies in the following pages. It's so good to have these local groups meeting up again

On page 27 John Phillips brings us another historic Moment in Time and we have an appeal from Ferne on page 29 to find a home for Amber.

I hope you enjoy this edition of Cloverleaf.

*Lesley Cole*

Editor

## *In the Garden..*with Claire Stenhouse at Combe Dingle Nursery

I wonder how many of you were caught out by the dramatic drop in temperature in December. I was, and I call myself a professional?? I will be optimistic and give those plants that suffered the benefit of the doubt. If there is no sign of life by mid-March, then onto the compost heap they will go. Luckily, I don't have many tender plants and I am not much of a fan of plants that need heating. I feel it unnecessary when there are so many wonderful plants that don't need it. Especially now, when we are more aware of the environmental impact and cost of heating.

If you haven't already done so, look out for dead, dying and diseased branches. There may be more due to the heatwaves. Use clean, sharp tools and leave a tidy cut. When removing a weighty limb, it is a good idea to remove some of that weight first. If big enough to use a saw, then cut through 1/3 underneath first to prevent any tearing and damaging the trunk. The cut shouldn't be flush with the main trunk so that the bark can heal over. I don't use any paint on the cut. This can often trap in disease and do more harm than good. Prune shrubs such as buddleias and roses down by a third to prevent wind rock damage, then reduce again the spring. Tie in any climbing plants.

Most jobs have been done in the vegetable garden. Apart from compost turning, mulching and of course picking delicious greens!!

Although the Nursery is closed for January, it doesn't mean time off. There is always lots to do now, especially after such a busy December in the shop. There is lots of ordering to do. To try and guess what might be popular this year. I mostly grow what I like and hope everyone else does too. I have been known to say 'sorry I don't stock that plant, I don't like it.' A fellow Nursery owner once said to me that they weren't keen on growing herbaceous because they didn't know where to start. Me, I find it hard to know where to stop. There are plenty of repairs to done around the nursery. There is a polytunnel to put up, another that is only just hanging there. Hopefully it will make it through another season. With so many things that I would like to get done I find it useful to have a written list. If it is not on the list then I am likely to put it off, or wake in the night worrying about it.

Choose your days to garden when it has been so wet. If soil is sticking to your boots it is likely that you will be compacting the soil and doing more harm than good, although it can be a lovely time to dress up warm and get out into the garden and look forward to longer days.

## Village Hall

The committee will be meeting on 23<sup>rd</sup> January (too late to report in this edition of Cloverleaf), when amongst other things we will be discussing how we can finance the necessary work on the roof. We have had a quote for £23,400 plus VAT (so total £28,080) for the reroofing and insulation, not including the cost of photovoltaic panels.

We will be using some of our reserves and seeking grant funding towards this, but will also be appealing for help from the local community. If anyone feels able to donate any sum, we would be immensely grateful. As a registered charity, we qualify for Gift Aid, so if you are a taxpayer, we can send you a simple form to complete which does not cost you any extra, but means we can claim an extra 25p for every £1 you give. If you are able to help us (with or without Gift Aid), please contact our Treasurer, Ian Croucher, email [csnvillagehall@hotmail.com](mailto:csnvillagehall@hotmail.com) or phone 07780 082 082.

Please see the separate article in this magazine for more about the Village Hall 50/50 club.

**Village Hall Committee**

### Film Nights at the Village Hall

The films for the next 3 months are:

**3<sup>rd</sup> February: Tom Cruise  
in *Top Gun Maverick***



**3<sup>rd</sup> March:  
*Elvis* with  
Tom Hanks  
and Austin  
Butler**



**7<sup>th</sup> April: the very popular Fisherman's Friends  
and their sequel, *One and All***

***As ever, doors open at 6.30 for a 7.00 start.***

# BOB DUNN

## CHARDSTOCK JOINERY

*Quality Purpose Made Joinery*

**Windows**

**Stairs**

**Doors**

- Over 45 years experience
- Supply or supply & install
- Listed building work

**Tel: 07875 067092**

Email: [chardstockjoinery@hotmail.co.uk](mailto:chardstockjoinery@hotmail.co.uk)

# Alexander

## THE GRATE



**01460 613220**

## Chimney Sweep

APICS member & HETAS registered.

Fully Insured, Certificate Issued.

Friendly, Clean, Professional Service:  
Brush & Vacuum; Power Sweeping.

[www.gratechimneysweep.co.uk](http://www.gratechimneysweep.co.uk)

Email: [a.gratesweep@gmail.com](mailto:a.gratesweep@gmail.com)

1 Old Orchard, Forton, Chard, TA20 2LX



# WILLIAM YOUNG

## PIANOS

- Tuning
- Repairs
- Restoration
- Cabinet work
- French polishing
- Sales

**From a sticky note to a full rebuild**

Over 20 years' experience inc  
Steinway, Bluthner, Bechstein

**Tel: 01884 906313**

**Tuning: 07714 993171**

[hq@wypianos.co.uk](mailto:hq@wypianos.co.uk)

[www.wypianos.co.uk](http://www.wypianos.co.uk)

# Oven Spa

South Somerset's independent,  
environmentally friendly, oven  
cleaning service.

No fumes, no fuss, just a super shiny  
oven that looks as good as new.

£55 for a single oven, £65 for a  
double. Hobs & extractors from £10.

See [ovenspa.com](http://ovenspa.com) or call Mick  
George on:

**07843 99 88 96**

**DIRTBUSTERS**  
OVEN CLEANING NETWORK

## Wadeford Charity Book Club



An ominous sky, then a clap of thunder, welcomed quite a crowd as our doors opened at two o'clock on a January Saturday afternoon. It would have been worth a photograph, had I remembered to take my camera or even my phone! Actually, by three o'clock the rush had turned to a trickle, but nevertheless it was still a good sale with about 200 books re-homed. If you missed out then you'll have to wait until it all happens again on March 5<sup>th</sup>, which is back to our Sunday slot. Entry remains free and books are usually just fifty pence a go. We're happy to accept donations of books on the day, but if you happen to have shed-loads to offer, or you'd need us to collect your book donations, then please call Moira on 01460 261950 beforehand.

Thanks to everyone involved and hope to see you all soon.

### **50+ and LOOKING FOR SOMETHING NEW TO TRY IN 2023?**

**Something to enhance your physical and mental fitness?**

**Something fun with a friendly group of people?**

**Then why not give World Circle Dance a try?**

We're a small relaxed welcoming group who meet twice a month in Combe Village Hall. We dance to music from all over the World, from Bob Marley to Vivaldi, from Zorba's Dance to Enya.

Some dances are just a few steps, whilst others need a bit more learning, but they're always carefully taught and there's a lovely motto in the group – "no mistakes, only variations".

World Circle Dance is not for performance, it's about getting together and enjoying movement and music. No partner is needed, and no experience either, just a sense of rhythm. The session is 1.5 hours, and we stop in the middle for tea and a chat.

You're welcome to come along for a free trial session. We meet two Mondays a month, and there are two classes to choose from – either 10am or 2pm.

**See the Diary Dates section for the next class dates.**

## Underway Meade

We have had a quiet few weeks, except for the Combe Critters Christmas event which was held on 21st December and much enjoyed by the children and their parents / carers.

This year Underway Meade will have been a parish amenity for 25 years so we will be celebrating our Silver Jubilee in suitable fashion. Watch out for further notices in due course.

In the meantime, a busy few weeks are planned to keep the Meade maintained, though you will have to read the next issue of Cloverleaf for an update.



We will have carried out some more pond maintenance on the 21st January when our volunteers will have donned their waders and helped us clear some more reed and silt to ensure the pond does not dry up.

On 1st February we will be welcoming the Neroche Volunteers again to help us with a number of tasks, including improving the access to the mound.

On 10th February we will be holding a hedge laying training day, led by George Pigeon from the Blackdown Hills Hedge Association. This was originally due to have been held in March 2020 but was cancelled due to Covid restrictions and this is our first opportunity to hold it since.

If you visit the Meade in the next few weeks, do go and look at the snowdrop display in the woods and near the Symes gate entrance.



**Lynn Osborne, Chair, Combe St. Nicholas Parochial Trust.**  
**Tel: 01460 62015 Email: [lynnosborne99@gmail.com](mailto:lynnosborne99@gmail.com)**



## Weather watch – local rainfall report



Period	2022 Actual	2021 Actual	10 Yr Ave 2002-2011	10 Yr Ave 2012-2021
<b>November</b>	210	20	131	130
<b>December</b>	103	116	116	148
<b>Jan-Oct</b>	588	1213	795	965
<b>TOTAL</b>	<b>901</b>	<b>1349</b>	<b>1042</b>	<b>1243</b>

All measurements in millimetres 25mm = 1" = 45 gallons/sq yard

November was fairly wet with rain falling on most days during the month. The first half of December was dry but a considerable amount of rain fell in the second half and number of weather warnings were in place during the Christmas period.

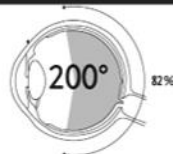


## ROBERT FRITH OPTOMETRISTS

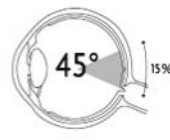
Experienced optometrists delivering outstanding eye care  
in a relaxed and friendly environment.

A wide range of products and services including tailor-made  
spectacle frames and lenses, emergency eye care and the  
latest in 3D eye scanning technology.

Introducing the New **optomap**  
ultra-wide field retinal imaging  
technology, giving us a comprehensive  
view of your eye health



with optomap ultra-widefield  
retinal imaging



without optomap

**18 Fore Street, Chard**

**01460 67771**

We are happy to collect any unwanted glasses for us to use in our eye testing work in Kenya.

## **HOBBS**

### **Electrical Contractors Ltd**



\*Commercial \* Domestic \* Industrial\*

Electrical Installation  
Rewires, new builds & renovations  
Maintenance & Repairs  
Inspection & Testing, Portable Appliance Testing

**01460 712320**

Est 1987

**Kathy Arnold Therapies**  
**REFLEXOLOGY, INDIAN HEAD**  
**MASSAGE, AROMATHERAPY**  
**MASSAGE, HOPI EAR CANDLES**

Now available in Buckland St. Mary  
Please call Kathy on 01460 234693  
for information or appointment or visit  
[www.kathyarnoldtherapies.co.uk](http://www.kathyarnoldtherapies.co.uk)

**Please support  
our advertisers as  
they support your  
community magazine**

# **Loads of Logs**

*Local Sustainable Firewood Logs  
generated from fellings & thinnings  
from the Cotley Estate.*



- Seasoned dry wood ready to burn.
- Trailer and bucket loads delivered (locally) to you.
- Bags of kindling & firewood available now.
- Active replanting programme.
- Active management of woods to promote biodiversity.

**Please ring Tom on 01460 239390**

## **Combe St. Nicholas Parish Council**

A minutes silence was held at the start of the last meeting to remember John Cockburn who served on the Parish Council for many years, also as the Chairman.

Unfortunately, the recent wet weather has left some of the local roads/lanes in rather a mess from leaves, etc. Please take care and, if cutting hedges, etc clear up any debris otherwise the drains get blocked as well, leading to more flooding. Clearing any leaves from the drain grating also helps but only if safe to do so.

Following the Community Resilience meeting – held in November, and the subsequent report in the last Cloverleaf magazine, some forms have been returned but if any other residents can help either with equipment, or skills, please let us know.

Flooding prevention – if residents consider sandbags, or other types of barriers that would help, for doors, airbricks, etc. there are various types available. Please contact us if information required, but most of these would need to be provided yourself.

The telephone box on The Green needs repainting, plus a few other items. If interested please contact me, details below.

Monday 8<sup>th</sup> May will be an extra Bank Holiday this year to celebrate the King's Coronation which takes place on Saturday 6<sup>th</sup> May.

The next Parish Council meetings will be held on Monday 27<sup>th</sup> February and Monday 27<sup>th</sup> March. 7.30pm in the Village Hall.

**Anne Hunt – Parish Clerk, Tel. 01460 61296**  
**combestnicholaspg@gmail.com**  
**website – [www.combestnicholas.org.uk](http://www.combestnicholas.org.uk)**

---

## **Combe St. Nicholas and Wadeford Gala Association**

Thanks very much to Daragh and everyone who helped with the lovely Christmas tree and lights for The Green. Also Chard Concert Brass who played in the evening to accompany the carols after the switch-on. All the residents of Combe Parish and those driving through the village really appreciated seeing the lovely tree in these dark days.

**Gala Committee**



# AYLOR SWEEPS

Chimney Sweep and Stove Installer  
07814 594 421



All types of chimneys and flues swept  
OFTEC registered stove installer  
Certificates issued  
Creosote removal treatment service

Maintenance/Service work completed  
CCTV inspections  
Birds nests removed  
Cows supplied & fitted

Web: [taylorsweeps.co.uk](http://taylorsweeps.co.uk)  
Email: [achimneysweep@mail.com](mailto:achimneysweep@mail.com)

## Ben's Carpet and Upholstery Cleaning

Trading Standards approved.  
Professional,  
courteous, reliable.  
Discount for OAPs.



Please call  
**01460 239837**  
or  
**07729 365846**

[benscarpetcleaning@hotmail.com](mailto:benscarpetcleaning@hotmail.com)

## **Combe Dingle Plant Nursery**

We invite you to come  
and take a look...

**Interesting herbaceous  
perennials  
Vegetable plants and  
Bedding**

Opening Hours:  
Weekdays 9am - 4.30pm  
**CLOSED WEDNESDAYS**  
Sunday 10am - 1pm

**Combe Dingle Farm,  
Street Ash**

**Tel: 01460 234660**

## **Excerpts from the Churchwarden's Report**

Since our last PCC meeting, we have continued fundraising; the October Coffee morning raised £158. Sheena Boyle was the highest bidder for the hand-made quilt. Our thanks go to Carol Robinson for donating the quilt.

The Christmas Fair which was run in conjunction with the school raised £757 for the church. Claire Blackburn very generously offered to match fund up to £500. We have not included this £500 in the final Christmas Fair figure.

Seventeen shoeboxes filled with gifts either for children or adults, young and elderly were sent to the Ukraine to help bring a smile to the people of this war-torn country. Reverent Deborah Perreau blessed them in our November Family Service.

We welcomed both CLOKS and the village school for their Christmas Nativity performances, both being a great success.

Both Churchwardens attended and passed a Leadership Safeguarding course at Flourish House, Wells. The course comprised of two separate sessions on consecutive weeks.

Our main challenge for 2023 will be to raise funds and investigate if we are eligible for any grants to repair the fallen plaster from the ceiling.

Early in November 2022 several large chunks of plaster fell and, as the church was hosting many services and concerts over the Christmas period, the decision was made to use a specialist in the repair of old buildings to make safe by removing any weak plaster. There is no insulation under the roof tiles, which is one of the reasons, as well as being such a vast space, which makes it so hard to heat the church.

### **John Cockburn**

**It is very sad to mark the death of John Cockburn on 27th  
November 2022.**

**Biddy and all the family thank all those who have sent  
messages and for all the kindness we have received. It has  
been a great help to us.**



## Succulent Interiors

Bespoke succulent arrangements  
available & to order.

Plus a stunning range of indoor pots,  
planters, vases & plant theme prints,  
cards & stationery  
for your home & as gifts

Free local delivery  
or collection from Combe  
Card, cash & BACS payments accepted

Like to view and choose at home?  
Contact us for an appointment.

**07957 323833**

Email: [sally@succulentinteriors.co.uk](mailto:sally@succulentinteriors.co.uk)  
Website: [www.succulentinteriors.co.uk](http://www.succulentinteriors.co.uk)  
Instagram & Facebook: Succulent Interiors

Please follow, like & share - we value your support



Pole Rue Farm

## Holiday Cottages

With a Llama Landscape  
in Combe St. Nicholas

2 beautiful self-catering cottages

★★ Open All Year ★★

**[www.poleruefarm.co.uk](http://www.poleruefarm.co.uk)**

**(01460) 238542**

# ASHCULME

**07815146343**  
**[info@ashculme.co.uk](mailto:info@ashculme.co.uk)**

# NPTC

Part of the City & Guilds Group

**QUALIFIED  
WORKFORCE**

## ALL TREE WORK UNDERTAKEN

- *Removals / Crown Reductions & Lifting / Deadwooding & More*

## STUMP REMOVAL

## GARDEN CLEARANCE WORK

## LANDSCAPING

## HEDGE REMOVAL & MAINTENANCE

Residential & Commercial  
work undertaken by our  
fully insured & qualified  
workforce

**Emergency Call Outs 24/7 - Paul Durman - 07815146343**

## Combe Resilience Plan – Help still needed!

In November, we held a meeting in the Village Hall to set out the benefits of planning ahead and how the community would cope in an emergency and invite people to set out their concerns and provide assistance where appropriate.

I'm pleased to say that a number of people offered resources and other help, both at the meeting and using the insert in the last edition of Cloverleaf. I'd like to thank all of you for your support.

Before the next stage of the resilience plan, we need to be satisfied we have sufficient skills and resources available. At present we could still do with more volunteers, so we can cover as many contingencies as possible. So, if you are prepared to help your community, please return the sheet included with the last Cloverleaf. If you no longer have it, the form is available for download on the Parish website at <https://combestnicholas.org.uk/emergency-information/>. Any help you can give will be much appreciated by the community.

**Rob Grimmond**

**Tel. 01460 261234; email [combe.resilience@gmail.com](mailto:combe.resilience@gmail.com)**

CLOVERLEAF PRODUCTIONS PRESENT



**8th - 11th February at Combe Village Hall**

**Wed -Fri at 7.30pm**

**Saturday at 2.30pm & 6.30pm**

**Tickets £8 adults, £5 children**

**Available from [www.seaty.co.uk/cloverleafpanto23](http://www.seaty.co.uk/cloverleafpanto23),**

**email [combepanto@btinternet.com](mailto:combepanto@btinternet.com)**

**or buy at Village Hall on Sats Jan 14, 21 & 28 10am-noon**



Walkies, playdays or holidays-at-home. Forest and beach walks, plus a secure 1.5 acre paddock on site. Based in Combe St. Nicholas. References available.

Prices from just £15

[lornadogzpal@gmail.com](mailto:lornadogzpal@gmail.com)

**DOGZPAL** 01460 929193 or 07703 471911



**WAYNE M LEWIS**  
**GARDEN SERVICES**  
01460 54034 / 07968397648

# Pest Control Services



**Fast Response**  
**Commercial**  
**Domestic**

**07730561506**  
Covering Devon/Somerset/Dorset

Smyth Pest Control Services



**[www.smythpestcontrol.co.uk](http://www.smythpestcontrol.co.uk)**

Wasps, rodents, birds, moles & insects all covered



**Painting**  
**Decorating**  
**Timber Window Conservation**

**f R. Barrett Decorating Services**

Tel: 01460 259744 Mob: 07759 177029

**[www.timberwindowconservation.co.uk](http://www.timberwindowconservation.co.uk)**

*professional – reliable – efficient*



## Combe CofE VA Primary School

Christmas at Combe School is always magical. This year our celebrations started on St Nicholas' feast day. We were lucky enough to have a visit in church from the man himself. After hearing about the life of St Nicholas, the children left with a chocolate coin!

We enjoyed a Christmas Jumper day and school performances of this year's Nativity 'I'm Gonna Shine!'



Christmas lunch was followed by another visit from Santa. So as not to add to our carbon footprint, the PFA arranged for each child to take home a fir tree sapling. These were instead of crackers, as these create a lot of waste. The children were delighted with them.



In addition to Christmas festivities, we were pleased to have an aerial drone photograph taken to celebrate our recent Ofsted inspection. The staff and children gathered on the playground to make the word 'GOOD'.

This term has started with the launch of our new project, 'The World of Work'. If anyone has an interesting job which the children would like to learn about, please do get in touch. The project will focus a lot on science and so the launch was an exciting science demonstration at the village hall.

The children are looking forward to starting their project work and also have visits to look forward to. These include a visit to the pantomime at The Brewhouse and a visit to The Arvon Foundation for the oldest children.

We would love to hear from anyone interested in listening to the children read in school. If you have any time to spare and would like to support us

**Christine Maxwell**  
**Headteacher**

## Domestic Electrical & Property Services

All aspects of domestic electrical work undertaken

- Testing and inspection
- Commercial installations
- Part 'P' registered electrician
- Property maintenance
- Mechanical maintenance
- CCTV & Intruder Detection, Installation, Service & Repair

☒ Fully Qualified   ☒ Fully Insured   ☒ Warranty Available

**All work considered throughout the South West**

For a Reliable, Honest & Efficient Service

Please Call John on:

**07525 782 678**

**01460 54583**

Or e-mail: [JohnnyKay@talktalk.net](mailto:JohnnyKay@talktalk.net)

**\*Special rates as new in business\***



## Stuart Weech Joinery

Bespoke,  
made to measure  
joinery items.

*Hardwood windows,  
doors, gates and all other  
joinery items considered.*

For a quote call:

**07786061475**

Email: [swjoinery1@hotmail.com](mailto:swjoinery1@hotmail.com)

## Lodge House B&B

Buckland St Mary, Chard,  
Somerset TA20 3TA

Tel: 01460 455455

[www.lodgehousebandbsomerset.co.uk](http://www.lodgehousebandbsomerset.co.uk)

[www.facebook.com/LodgeHouseBandB](http://www.facebook.com/LodgeHouseBandB)

Hosted by Neil and Kathy Arnold

## Country Fare Catering

Caterers for  
celebrations  
of all types



Hot & Cold  
Buffets or  
sit down meals

We use fresh local ingredients

For more information call

01460 66743 or 07450 829169

Or email [te.margetts19@gmail.com](mailto:te.margetts19@gmail.com)



## Village Hall Latest Winners!

With the 2 draws taking place recently in December 22 and January 23, the Village Hall Lottery is very pleased to announce the following prize winners:

### December 2022

1<sup>st</sup> Place was Jackie Walker (60)

2<sup>nd</sup> place was Emma Pennery (42)

3<sup>rd</sup> place was Anne Hunt (29)

### January 2023

1<sup>st</sup> Place was Emma Pennery (36)

2<sup>nd</sup> place was Helen Rose (62)

3<sup>rd</sup> place was Anne Hunt.(33)

**A very big congratulations to them and an even bigger  
THANK YOU for your support.**

If you haven't joined to help raise money for your village hall, then please call Ian on **01460 64098** or email **csnvillagehall@hotmail.com** to get your application form and start joining in the fun and you could become a WINNER! as well.

**Would you like to learn to Ring your Church Bells  
or revive your unused skill?**

**You can join in to**

**Ring for the King on May 3<sup>rd</sup> 2023.**



**Contact your local Bell Captain.**

**Chard: Ken Hallett 07488 254878**

**Combe St Nicholas: Ian Jones 0146062481**

**Wambrook: Dennis Rocket 01460712480**

**Whitestaunton: Sam Dyer 07966581240**

**WANTED**

**WANTED**

**WANTED**

## **YOUR CAR OR VAN**

**Before you part exchange or sell your car why not give me call for a price ?**

**Tel Martin on 07515 896095**

**Email: martin@combevillagecars.co.uk**

**Combe Village Cars**

**Buyers and Suppliers of Quality Vehicles**

## February

Thu	2	7.30pm	<b>Folk Dance Club</b> - Village Hall
Fri	3	10am-12noon	<b>Art Group</b> - Village Hall
		2pm-4pm	<b>Short Mat Bowls</b> - Village Hall
		6.30pm	<b>Film Night</b> - Village Hall8
Sun	5		See Church Services
Wed	8	7.30pm	<b>THREE MEN IN A TUB</b> - Village Hall
Thu	9	7.30pm	Combe's annual pantomime
Fri	10	7.30pm	presented by
Sat	11	2.30 & <b>6.30pm</b>	<b>Cloverleaf Productions</b>
Sun	12		See Church Services
Mon	13	10am & 2pm	<b>World Circle Dance</b> - Village Hall
Wed	15	7pm-9.30pm	<b>Short Mat Bowls</b> - Village Hall
Fri	17	10am-12noon	<b>Art Group</b> - Village Hall
		2pm-4pm	<b>Short Mat Bowls</b> - Village Hall
Sun	19		See Church Services
Mon	20	7.30pm	<b>Combe Community Group</b> - Village Hall
Wed	22	2.30pm	Women's Fellowship - Methodist Rooms
		7pm-9.30pm	<b>Short Mat Bowls</b> - Village Hall
Thu	23	7.30pm	<b>Combe Folk Dance Club</b> - Village Hall
Fri	24	10am-12noon	<b>Art Group</b> - Village Hall
		2pm-4pm	<b>Short Mat Bowls</b> - Village Hall
Sat	25	10am-11am	<b>Combe Duplo &amp; Duplo Club</b> - Methodist Rooms
Sun	26		See Church Services
		12-2pm	<b>Combe Café Sunday Lunches</b> - Village Hall
Mon	27	10am & 2pm	<b>World Circle Dance</b> - Village Hall
		7.30pm	<b>Combe Parish Council</b> - Village Hall

## March

Wed	1	7pm-9.30pm	<b>Short Mat Bowls</b> - Village Hall
Fri	3	6.30 for 7.00pm	<b>Film Night</b> - Village Hall
Sun	5		See Church Services
		2pm-4.00pm	<b>Wadeford Charity Book Sale</b> - Village Hall
Wed	8	7pm-9.30pm	<b>Short Mat Bowls</b> - Village Hall
Thu	9	7.30pm	<b>Combe Folk Dance Club</b> - Village Hall
Fri	10	10am-12noon	<b>Art Group</b> - Village Hall
		2pm-4pm	<b>Short Mat Bowls</b> - Village Hall
Sun	12		See Church Services
Mon	13	10am & 2pm	<b>World Circle Dance</b> - Village Hall
		7pm-9.30pm	<b>Short Mat Bowls</b> - Village Hall
Fri	20	10.00am	<b>Art Group</b> - Village Hall
		2pm-4pm	<b>Short Mat Bowls</b> - Village Hall
Sun	19		See Church Services
Mon	20	7.30pm	<b>Combe Community Group</b> - Village Hall
Wed	22	2.30pm	<b>Women's Fellowship</b> - Methodist Rooms
		7pm-9.30pm	<b>Short Mat Bowls</b> - Village Hall
Thu	23	7.30pm	<b>Combe Folk Dance Club</b> - Village Hall
Fri	24	10.00am	<b>Art Group</b> - Village Hall
		2pm-4pm	<b>Short Mat Bowls</b> - Village Hall
Sat	25	10 - 11am	<b>Combe Duplo &amp; Lego Club</b> - Methodist Rooms
Sun	26		See Church Services
		12-2pm	<b>Combe Café Sunday Lunches</b> - Village Hall
Mon	27	7.30pm	<b>Combe Parish Council</b> - Village Hall
Wed	29	7pm-9.30pm	<b>Short Mat Bowls</b> - Village Hall
Fri	31	10.00am	<b>Art Group</b> - Village Hall
		2pm-4pm	<b>Short Mat Bowls</b> - Village Hall

## *Clubs and Societies*



### **Yarcombe & District Young Farmers**

The winter months are always busy for young farmers, enjoying Christmas festivities, getting involved with social, sports events and attending meetings. We are also getting on well practicing for our entertains performance learning dance routines and lines and making and painting scenery, which is due to be performed on the 27<sup>th</sup> January at Exmouth, against other East Devon clubs.

November saw a bus full of members enjoy a night at Crealy Ball on the 19<sup>th</sup> November, a fun evening was had by all. On the 26<sup>th</sup> November, saw the return of our annual club wine & wisdom. A good night was had by all and thank you to Cathy for doing her famous quiz. £1805.45 made on the night, to go to towards our charity of the year. Members have been busy taking part in sport competitions with a bowling social at Hollywood bowl on the 28<sup>th</sup> November, to choose the team for the county round which took place on the 15<sup>th</sup> December. The team came 6<sup>th</sup> out of 14 teams.

On the 29<sup>th</sup> November members took part in pub sports against Whimble, which unfortunately we lost the pool, skittles and darts. Members have also taken part in mixed netball against other teams in east DeVon on the 4<sup>th</sup> December, well done to those who took part. We also enjoyed a skittles social night at the Sidmouth arms on the 19<sup>th</sup> December.

The month of December many members enjoyed attending festive activities including two balls. A bus full of members enjoyed dressing up in their ball gowns and black-tie attire to attend Marshwood Ball at Freshwater holiday park on the 3<sup>rd</sup> December. Then Devon ball at Westpoint on the 17<sup>th</sup> December, celebrating the season in style.

Other festive activities to report included our club Christmas meal on the 9<sup>th</sup> December at the Sidmouth Arms. About 40 members attended; a good night was had by all. Thank you to the Sidmouth Arms for a great meal. The afternoon of the 11<sup>th</sup> December 16 members helped out the Hine family, with the annual turkey plucking. A great afternoon/evening was had and turnout, thank you.

Tuesday 13<sup>th</sup> December 10 members enjoyed an evening making wreaths with Sarah Broom and supported by the Laura Persey trust. Thank you to Sarah for teaching us, members had a great evening making festive wreaths. Once again, members went charity carol singing to 3 pubs in the local area

on Friday 16<sup>th</sup> December, where we were able to raise £280, for our chosen charity Hospicecare.

Then later in the Christmas to New Year period the club enjoyed a social day out to Taunton Races on the 30th December where some were luckier than others.

Coming up in the new year we have our whist drive on the 13<sup>th</sup> January at Upottery Hall, also our re-run of our entertains performance on the 12<sup>th</sup> February at Axminster Guildhall and charity tractor run on the 26<sup>th</sup> February, more details to be announced soon.

If anyone has any further questions and would like to become involved with Young Farmers, please contact our Chairman Will Vining on 07850 605542, or our Secretary Molly David on 07979 899726. We have our club meetings every other week in either Yarcombe or Upottery Village Hall 8pm start.

**Natalie Sampson**  
**Press Secretary**

---

## Combe Lego & Duplo Club

Combe Lego and Duplo Club celebrates its first birthday this month and goes from strength to strength. We meet on the last Saturday of each month at 10 -11am in the Methodist Rooms. It's a great space for us all young and old to lose ourselves for an hour with these marvellous bricks, meet friends, make new ones and spend quality time with our little ones!

We will continue to enjoy Lego and Duplo builds through 2023 all with hot chocolate, nice coffee and always with cake!



**Combe Lego & Duplo Club**  
**Meets in Combe St Nicholas Methodist Rooms.**  
**At 10 - 11am on last Saturday of each month.**  
**Contact Deborah 07879 698 920 or Denise 07743 021 881**

See you ***there*** with those amazing ***squares!***



# Auxilia Financial Services

Award winning, trusted and reliable local Mortgage advice based in Broadway, Somerset. With over 50 mortgage lenders including High Street names, we'll find the right mortgage & protection for you and your family.

- |  |  |
|--|--|
| <input checked="" type="checkbox"/> First Time Buyer     | <input checked="" type="checkbox"/> Life Insurance             |
| <input checked="" type="checkbox"/> Moving Home          | <input checked="" type="checkbox"/> Serious & Critical Illness |
| <input checked="" type="checkbox"/> Remortgaging         | <input checked="" type="checkbox"/> Income Protection          |
| <input checked="" type="checkbox"/> Buy to Let           | <input checked="" type="checkbox"/> Building Insurance         |
| <input checked="" type="checkbox"/> Bad Credit Mortgages | <input checked="" type="checkbox"/> Contents Insurance         |

☎ 07810 068987 ✉ [ben@auxiliafs.com](mailto:ben@auxiliafs.com) 🌐 [www.auxiliafs.com](http://www.auxiliafs.com)

Your property may be repossessed if you do not keep up repayments on your mortgage or any of other debt secured on it.

Auxilia Financial Services is a trading style of Benjamin Mark Small which is an appointed representative of The Openwork Partnership, a trading style of Openwork Limited which is authorised and regulated by the Financial Conduct Authority



## CHIROPODIST PODIATRIST

Christian Grimminger  
SRCh DPodM MRCPod

**Professional, Experienced  
& Caring**

Essex House Medical Centre, Chard  
01460 30114

Tawstock Medical Centre, Chard  
01460 30114

The Linenyard Practice, Crewkerne  
01460 78068

Home visits: 01460 30114



**Now's the time  
to start preparing  
your garden  
and planting seeds**

AVAILABLE IN THE GARDEN CENTRE  
SEED POTATOES/ONION SETS/DAHLIAS  
PLUS POTS OF SPRING BULBS  
NEW STOCK OF ROSES AND LOTS MORE

**Chard Garden Centre**  
Cuttifords Door, Chard  
01460 63088

*Your local Garden Centre -  
that just keeps growing!*



# Combe St Nicholas Gardening Club

## Bad News and Good News!

Before COVID, it was clear that attendances had fallen significantly in recent years, a problem not restricted to just this club. As a result we reduced the number of meetings with external speakers as a cost-cutting exercise. The situation became more complicated by the loss of Committee members.

So an Extraordinary General Meeting was convened early in December to make a decision on its future. I gave a brief talk about the Garden Club, mentioning the decline in membership over a number of years and also the rising cost of garden experts to give talks. I also mentioned that only two of the existing committee members were willing to continue, primarily due to advancing age and health concerns.

After wide-ranging discussion, a vote was taken and it was decided unanimously that the Club should be wound up and that half of the funds in the account should be transferred to Combe Community Group, to fund activities such as the Annual Show and cream teas and plant sale, with appropriate help. The remaining half was to be split evenly between the Village Hall and Underway Meade.

I'd like to thank the Community Group for being prepared to incorporate some activities. To move things forward, on the night we formed a sub-committee to take on responsibility for the Annual Show, which this year will be held on Saturday 5<sup>th</sup> August. Further details will be published in due course.

I'm sad to see the Gardening Club fall by the wayside after so many years but I think we've come up with a sensible way forward for current times. You never know, one day it may rise again!

**Rob Grimmond**

**Keep in touch with the NEW Combe village website -  
visit [www.combestnicholas.org.uk](http://www.combestnicholas.org.uk)**

# STEPHEN MELLING

## Painter & Decorator

Wootton House, Underway,  
Combe St Nicholas, Chard  
Somerset, TA20 3NY

**Tel: 01460 64353**

### 40 YEARS EXPERIENCE IN THIS AREA

- Quick Response to Enquiries
- Detailed Estimates, Rapidly Despatched
- High Quality Workmanship and Attention to Detail
- Giving You the Confidence and Security for all your Internal and External Decorative Work

Also

**TILING - GUTTERING - TIMBER REPLACEMENT  
GENERAL HOUSEHOLD MAINTENANCE**



# Arboricare Ltd

The cutting edge of tree care.

- |                   |                   |
|-------------------|-------------------|
| ✓ Surveys/Reports | ✓ Pollarding      |
| ✓ Planting        | ✓ Crown Reshaping |
| ✓ Pruning         | ✓ Thinning        |
| ✓ Felling         | ✓ Stumpgrinding   |
| ✓ Fully Insured   |                   |

*Approved Contractor of the Arboricultural Association*

- |                  |                     |
|------------------|---------------------|
| ✓ 24 Hr Call Out | ✓ Estate Management |
|------------------|---------------------|

Covering The South West

T: 01823 462972 M: 07831 108445

E: [arboricare1988@gmail.com](mailto:arboricare1988@gmail.com) W: [www.arboricare.co.uk](http://www.arboricare.co.uk)  
New Rendy Farm, Oake, Taunton, Somerset TA4 1BB



## Combe Art Group

Our Group continued to meet throughout the Autumn term tackling a diversity of subjects put forward for those of us who would like a little inspiration. These included Frogs and Frog Spawn, Building Textures, Autumn Leaves and, of course, Firework Night. These subjects are optional but most of the members had a go and it's surprising where the imagination leads.

In October we took part in the Chard Inner Wheel Showcase Day advertising our Group and exhibiting some of our work in the Guildhall.

In November we held our Annual Exhibition in the Village Hall and, despite the rain, this event was well attended. It was a sociable occasion together with a raffle and refreshments; first time visitors being surprised by the variety and quality of the work on show. As a result of the Exhibition we were able to donate £150.00 to the Hall itself.

We started back on Friday, 13 January at our usual venue of Combe Village Hall, starting at 10.00am to 12.00 midday.

Our friendly Group has a few vacancies so if you would like to join us please contact David Selley, tel: 01460 61527, email, [brambles7@btinternet.com](mailto:brambles7@btinternet.com), or Ian Whitehead, tel:01460 64067, email, [iandavidwhitehead3@gmail.com](mailto:iandavidwhitehead3@gmail.com).

**Audrey Ketcher**

---

## Combe Community Group

A lovely Christmas dinner was enjoyed by 32 residents in December, provided by Heather Margetts and helped by Sally and Julia. On Monday 16<sup>th</sup> January Jonathan Fairey gave a talk about sustainable farming in the Blackdown Hills

Monday 20<sup>th</sup> February – Yvonne Froehlich is giving a demonstration and talk about Jewellery techniques, with some for sale too

Monday 20<sup>th</sup> March – a quick AGM followed by talk and slides by our current Chairman, Lynn Osborne, re her visit to Antarctica, seeing penguins, seals and whales.

All these Meetings will be at the Village Hall starting at 7.30pm. £3 entry including refreshments and everyone is welcome.

For more information contact **Anne Hunt (61296)** or any committee member

## Local Handyman

25 years experience



- \* Quality, professional work
- \* Trustworthy and reliable
- \* All types of home maintenance
- \* Tiling
- \* Wooden and laminate flooring
- \* Kitchen and bathroom fitting
- \* References available – DBS checked

**Fair prices and  
excellent service guaranteed.**  
Call Paul on 07894032119

## CHIROPODIST/ PODIATRIST

**STEPHEN WAPLINGTON**

MSSCh, MBChA  
HPC Registered

**EXPERT FOOTCARE  
IN YOUR OWN HOME  
AT NO EXTRA COST**

*For friendly and professional  
treatment please call:*

**01308 456724**



## Rapid-Print

**On the Blackdowns  
Nr Chard • TA20 3HX  
T: 01460 234 100  
E: neil-wells@btconnect.com**

## DESIGN, ARTWORK & PRINTING

**Full Colour or One  
MAGAZINES • POSTERS  
ADVERTISING LEAFLETS  
GREETINGS CARDS  
BUSINESS CARDS  
COMPLIMENT SLIPS  
LETTER HEADS  
INVOICE/ORDER FORMS  
DELIVERY NOTES  
MAIL SHOTS • MENUS  
JOB SHEETS / CARDS  
BROCHURES • STICKERS  
RING or EMAIL FOR A  
QUOTE**

*At Competitive Prices*

**We can  
Print from your Office  
or PDF's Files**

## *A Moment in Time with John Phillips*

### **Turnpike Trusts**

There were human bones clearly visible in the south bank of the new cutting. In 1827 this sombre discovery was made as labourers, employed by the Chard Turnpike Trust, were digging towards the top of Snowdon Hill on Whitestaunton Lane, now the A30.

The Trust, one of 30 covering the highways of Somerset, was set up in 1753 by Act of Parliament. It gave the Trust responsibility for the London to Exeter highway, from Crewkerne to Stockland and for the highway from Chard south to Axminster. Later Acts gave them responsibility for the road to Staple Fitzpaine via Combe, plus the branch off it towards Wellington as far as the Holman Clavel and also the road from Chard to Winsham and Drimpton.

The Trust built 8 Toll houses and gates where the keeper charged £1 for a horse and rider and up to £12 for a wagon in today's money.

The Chard Trust moved the route west of Chard in stages up the valleys and eventually to Yarcombe by the A30 route used today. The work of reducing the gradient at Snowdon was the final stage in this process. 25 years later the Trustees authorized the erection of a bar to a lane which stopped the woodmen of Whitestaunton avoiding the toll gate at Snowdon. This was a blow to the woodmen as they had to now pay the equivalent of half a day's wage to pass through.

The Ilminster and Honiton was the other Trust which directly impacted people living in the locality. This was specifically set up to create a road between Ilminster and Honiton. This was completed by 1820 and called (accurately) the New Road, now the A303. Newtown sprang up with smiths and wheel wrights to repair the passing vehicles and replace lost horseshoes. In 1841 William Stone and his son Lambert were wheelwrights there. His wife Lettice was helped by their 10-year-old servant girl, Mary Tucker.

This new road directed a lot of traffic from the Crewkerne – Chard – Yarcombe Road, which is still the case today.

The Turnpike improvements of the roads in the Kingdom resulted in the great age of stage coach and the flourishing of the great coaching inns. The old George in Combe (now 3 private houses) the Greyhound at Staple Fitzpaine and the Angel and the George in Chard are examples. A new inn, the Half-Way House was built on the south of the 'new road' just to the west of Newtown. William Summers was the landlord in 1841 and had 18 acres of pasture and arable attached. Ideal for the hay and oats required for re-fueling the horses.

Charles Dickens wrote in 1870 "the ruthless railways have killed and buried ..... the great stage coaching times". It also did for the Turnpike Trusts. In 1863 the Furnham Toll gate was demolished during construction of the Taunton and Chard railway. By 1875 the Chard Trust, winding up its affairs, was permitted by the newly created Ilminster road authority to sell Snowdon Toll House. Businesses at Newton struggled and the Half Way House closed by 1900. Turnpikes were history.

*Perhaps the story behind this sombre discovery will be in the next issue....*

## **GORDON SUGGETT & DAUGHTER**

INDUSTRIAL DOMESTIC ELECTRICAL CONTRACTOR



**GORDON**

**07752 239083**

**LUCY**

**07885 629884**

INSPECTION AND TESTING      PAT TESTING  
SMALL REPAIRS TO NEW REWIRES  
EMERGENCY LIGHTING  
DOOR ENTRY CAMERA ALARM SYSTEMS  
PRE HOUSE BUYING INSPECTIONS  
ESTIMATES FREE



### **COMBE WOOD COMPUTERS**

Computer & Laptop,  
Repairs and Upgrades  
Website Design & Digital Marketing

☎ 0146067794 / 07984419755

🌐 [www.combewoodcomputers.co.uk](http://www.combewoodcomputers.co.uk)

✉ [dave@combewoodcomputers.co.uk](mailto:dave@combewoodcomputers.co.uk)



## **F.R. Veale**

*Painter  
and  
Decorator*



Fully insured

**Call Francis  
on 01460 68423**



## **B D E fabrications**

*Architectural Metalwork Specialists*

- ❖ Staircases
- ❖ Balustrading
- ❖ Historic & Antique
- ❖ General Engineering, Welding & Fabrication
- ❖ Gates & Railings
- ❖ Glass & Stainless
- ❖ Structural Steels

Clive Woods

Tel: 07818 033040

Email: [info@bdefabs.co.uk](mailto:info@bdefabs.co.uk)

[www.bdefabrications.co.uk](http://www.bdefabrications.co.uk)

## **D. ELWOOD**

**Landscaping & Garden Maintenance**

- Paving
- Fencing
- Decking
- Walling
- Turfing
- Grass Cutting
- Hedge Cutting

For all enquiries please contact

**07849 790519**

## Amber is looking for a forever home

Amber came to Ferne in November 2021 after she had come to the end of the holding period in the pound. Being an unidentified, unclaimed stray, she had nowhere to go so we agreed to take her in with several other dogs in the same situation.

All the other dogs Amber arrived with have long since found their forever homes leaving Amber still waiting in the kennels with just her cuddly toys.

We have no information about Amber's life before kennels but looking at some of the scars on her, she has seen some of the less lovely side of life.

Amber is a real character and has tonnes of energy, while she can be bouncy and a lot of fun she also loves to just chill out on the sofa and have plenty of cuddles. She is a joy to be around and would make a fantastic companion to someone in need of a bit of sunshine in their life.



Amber would suit a new home with a lovely big sofa and no other animals to take up any attention from her new owner. She seems to only make friends with very specific dogs, namely larger male greyhound/lurcher types. No other dogs will do. Amber would be best in a rural home where she doesn't have lots of other dogs walking past all the time.

Obviously as a sighthound type, cats and small furries are a definite no and she would only be able to have off lead exercise in a safe area such as a secure dog field. Amber could live with older children.

Amber has just had her 8<sup>th</sup> Birthday; it would be amazing if by her next Birthday (hopefully long before) she is fully settled in her home and we are able to write a happy ever after story for this girl.

## Eleighwater House Retirement Home

Chard, Somerset.

Wonderful Relaxed Family Care Home.

Offering 8 single en-suite rooms.

First Class Care, Excellent Home Cooked Food

Registered with the CQC

[www.eleighwaterhouse.co.uk](http://www.eleighwaterhouse.co.uk)

[www.carehome.co.uk](http://www.carehome.co.uk) for recommendations

**01460 67532**

**FABRICS •  
CURTAINS • LOOSE  
COVERS • UPHOLSTERY**  
**CUSHION/SRING REPLACEMENT/REPAIR**  
*Combine your ideas with our  
inspiration to create the  
professional effect you  
desire from our own  
workshop in  
Chard.*

We come to you for:  
**FREE QUOTATION & ADVICE/  
PATTERN SELECTION, ETC.**

**RED HOUSE FURNISHINGS**  
**CHARD-01460-**  
**220110**

## E & S COMPUTERS

**Unit 27, Ilton Business Park,  
Ilton, Somerset, TA19 9DU**

Desktop/Laptop Repairs & Upgrades  
Custom Built PCs  
Epson Express Centre

Ink Cartridges & Paper - Keyboards - Mice  
Printers - Webcams - Cables - Routers  
Wireless Adapters - Internet Security  
And much more!



Give us a call on

**01460 259999**

or come & see us.



Email: [enquiries@enscomputers.com](mailto:enquiries@enscomputers.com)

Website: [www.enscomputers.com](http://www.enscomputers.com)

Online Shop: [www.enscomputers.co.uk](http://www.enscomputers.co.uk)

*Established 2007*

## 'Morpeth'

Comfortable, well-furnished  
holiday cottage,  
centre of Combe St. Nicholas

Sleeps 6 - available all year

Enquiries/bookings **01367 710445**

Email: [rarapacker@gmail.com](mailto:rarapacker@gmail.com)

[www.little-white-house.co.uk](http://www.little-white-house.co.uk)

## Duncan Pavey Carpenter & Joiner

**20 yrs Experience**

- ❖ Specialist Installer of Kitchens,  
Bedrooms & Bathrooms
- ❖ Home Improvements ❖ Tiling
- ❖ Flooring ❖ Domestic Plumbing

**T: 01460 63127 M: 07786 374 528**

**E: [duncanpavey@gmail.com](mailto:duncanpavey@gmail.com)**



# *Cloverleaf Parish Pages*

## *Vicar's Letter*

February already, you always say that I hear you say, well I must be getting older time is whizzing by.

In my garden and out and about there are still leaves on some of the trees which have failed to fall yet. However, by the time you read this I am hoping they will have been stripped naked of the last fragments of array, leaving them standing exposed and naked, with no embarrassment, no shame, no inhibitions that humans hold.

Their shape and beautiful form standing for all who chose to take a moment, to see what they really are. The shape they have taken is a result of being grown into by force of nature and human planting, rooted to the spot, maybe for centuries, with no choice of place, or time.

They survive what the elements throw at them rooted down into the mother earth, feeding from her, using what is provided as a source of life -giving connectedness within the balance set by time and season.

Let's take some time to stop and look, and appreciate what is around us, because the reality is, life is short. Maybe in this new year, we can take the time to do something, meet up with someone, or travel somewhere, take a moment or a week or two to experience a new connectedness for ourselves.

I have been thinking about Ecclesiastes Chapter 3, the balance of both sides being equal, and the need for both the good and the bad, the making and tearing down, the crying and the laughing. Before the memories of lockdown fade into the past, lets grasp the opportunities to step off the daily escalator which has speed up again over the last year and just be, for a moment.

*Rev Georgina.*

# *Bishops Funeral Services*

An Independent Family Owned Business  
Associated with Local Funerals  
for over 130 years

**PRIVATE CHAPEL OF REST  
BLACK DAIMLER CORTÈGE**

**Proprietor : Deirdre E. Cargen**



**Tel : 01460 66909 Fax : 01460 66580**

**Email : [bishops.funeralservices@btconnect.com](mailto:bishops.funeralservices@btconnect.com)  
CILLERHAYES, OLD TOWN, CHARD, SOMERSET TA20 2AS**

# *A J Wakely & Sons*

***A Private Independent Family Funeral Directors***  
**- 24 Hour Service -**



Private Chapels of Rest

*[www.ajwakely.com](http://www.ajwakely.com)*

**Golden Charter**  
Funeral Plans 



**7 West Street, Ilminster Tel: 01460 52576  
45 Holyrood Street, Chard Tel: 01460 67900**

Please contact a member of our dedicated caring team for any advice or guidance.

## Whitestaunton Church What's On

All Welcome to Join Us!

### Holy Communion

Sunday 19 February at 10.30am

### All Age Mothering Sunday Service

Sunday 19 March at 10.30am



## Fun Family Easter Bingo

With Easter Egg prizes!

Raffle

**Saturday 1 April 2023**

Buckland St Mary Village Hall

Doors open at 7pm - Eyes Down at 7.30pm

Tea, Coffee and biscuits available, donations welcome

All proceeds to go towards Whitestaunton Church Fabric Fund



For enquiries about Baptisms, Weddings and Funerals please contact the clergy. If you would like us to visit you or just want a chat please do not hesitate to contact me.

Rev Georgina

## FROM THE PARISH REGISTERS

We give thanks for the lives of:

Barbara Webber

Combe

John Cockburn

Combe

Joan Salter

Combe

Vera North

Wambrook

## Church Services across the Benefice

FEBRUARY	Combe	Wambrook	Whitestaunton	Chard
<b>Feb 5<sup>th</sup></b> 3 <sup>rd</sup> before Lent	<b>10.30am</b> Family Service	<b>9.15am</b> BCP Morning Prayer		<b>8.00am</b> Holy Communion  <b>10.00am</b> Morning Prayer  <b>10.30am</b> Family Time @St Mary's
<b>Feb 12<sup>th</sup></b> 2 <sup>nd</sup> before Lent	<b>10.30 am</b> Holy Communion	<b>9.15am</b> CW Holy Communion		<b>10.00am</b> Holy Communion
<b>Feb 19<sup>th</sup></b> Sunday before Lent	<b>10.30am</b> Service of the Word at the Parish Church	<b>6.00pm</b> BCP Evensong	<b>10.30am</b> Holy Communion	<b>8.00am</b> Holy Communion  <b>10.00am</b> Morning Service
<b>Wed 22<sup>nd</sup></b> <b>Ash</b> <b>Wednesday</b>	<b>7.00pm</b> Holy Communion with Ashing			<b>9.45am</b> Holy Communion with Ashing
<b>Feb 26<sup>th</sup></b> 1 <sup>st</sup> of Lent	<b>10.30am</b> Holy Communion			<b>10.00am</b> Breakfast Church with Holy Communion  <b>4.00pm</b> Taizé Evensong

BCP Communion: 3rd Wednesday of the month at 10.00am at Combe

## Church Services across the Benefice

MARCH	Combe	Wambrook	Whitestaunton	Chard
<b>March 5<sup>th</sup></b> 2 <sup>nd</sup> Sunday of Lent	<b>10.30am</b> Family Service	<b>9.15am</b> BCP Morning Prayer		<b>8.00am</b> HC <b>10.00am</b> Morning Prayer <b>10.30am</b> Family Time @ St Mary's
<b>March 12<sup>th</sup></b> 3 <sup>rd</sup> Sunday of Lent	<b>10.30am</b> Holy Communion	<b>9.15am</b> CW Holy Communion		<b>10.00am</b> Holy Communion
<b>March 19<sup>th</sup></b> 4 <sup>th</sup> Sunday of Lent <b>Mothering Sunday</b>	<b>10.30am</b> Service at the Methodist Church	<b>6.00pm</b> BCP Sung Evensong	<b>10.30am</b> All age Mothering Sunday Service	<b>8.00am</b> Holy Communion <b>10.00am</b> Morning Worship
<b>March 26<sup>th</sup></b> Passiontide begins 5th Sunday of Lent	<b>10.00am</b> Benefice Holy Communion At Chard			<b>10.00am</b> Benefice Holy Communion 4.00pm Evensong

## Wambrook Flowers and Cleaning

### Altar Flowers

Jan 1 & 8	Elspeth Hunt
Jan 15 & 22	Susie Eames
Jan 29 & Feb 5	Ally Eames
Feb 12 & 19	Jacqueline Cosby
Feb 25 & Mar 5	LENT

### Cleaning

Marie Cordwell
Jenny Johnston
Kay Clegg
Jessie Kuszek
Vanessa Hothersall

## Cloverleaf Parishes Information

### Clergy contact details:

**Rector:** Rev'd Ann Kember

The Vicarage, Forton Road, Chard TA20 2HJ

Tel: 01460 351521 Email: annkember58@gmail.com

**Associate** Rev'd Georgina Vye,

**Vicar:** The Vicarage, 57 Caraway Close, Chard, TA20 1HP

01460 66159 or 07950 989916 Email: g.vye@btinternet.com

### Cloverleaf Churchwardens

**St Nicholas, Combe:**

Penny Croucher (07780 081081)

Keda Horn (07867 300795),

**St Mary's, Wambrook:**

Graeme Pidgeon (07807 284738)

Visit the Wambrook website

[www.wambrookparishchurch.com](http://www.wambrookparishchurch.com)

**St Andrew's, Whitestaunton:**

Jane Harris (PCC Secretary - 239113),

## COMBE ST NICHOLAS METHODIST CHURCH

**Services:** 10.30am fortnightly (as per plan on Noticeboard on railings)

**Minister:** Rev Anna Flindell (01460 261766)

**Steward:** Arnold Coleman (64892)

### Copy date for April/May issue of Cloverleaf

*Items for Cloverleaf should be e-mailed to [csnparishmag@btinternet.com](mailto:csnparishmag@btinternet.com) or delivered to **The Village Shop & Post Office, Combe** NO LATER THAN 12noon on **TUESDAY 14th March**. Please note: long articles may have to be edited and inclusion cannot always be guaranteed.*

**Distributors: February/March Magazines will be in Combe Church ready for collection after 2.30pm on Friday 24th March.**

If you would like to advertise please call **01460 61896** or email [csnparishmag@btinternet.com](mailto:csnparishmag@btinternet.com) for availability of space and rates.

The inclusion of advertisements in this magazine is not a recommendation or endorsement by the magazine of either the advertisers or their goods or services. Readers must satisfy themselves as to the ability of the advertiser to provide the required standard of product or service.

# A.G.M.

Axminster Garden Machinery

• SALES • SERVICE • SPARES •  
Independent Specialists



BOOK  
YOUR WINTER  
SERVICE NOW

FACTORY APPOINTED AUTHORISED DEALERS  
OF ALL POWER EQUIPMENT WE SELL

## Quality, Value and Service

AS  
MOTOR



ECHO

BEAR



CAT

SNAPPER



WALKER

Simplicity

Masport

ECHO

Cub Cadet

LAWNFLITE

WOLF Garten

ELIOT

WILKINSON  
SWORD

DANARM  
Professional Garden Machinery

Apache

Unit 1A Weycroft Avenue, Millway Rise, Axminster, EX13 5HU

Tel: 01297 631186

[www.axminstergardenmachinery.co.uk](http://www.axminstergardenmachinery.co.uk)

## B. GIBBS FUNERAL SERVICES LTD.

An independent family business providing  
24 hours professional care, personalised planning,  
qualified advice and guidance for peace of mind



- Pre-paid Funeral Plans
- Home Visiting Service
- Private Chapel Of Rest

NAFD  
Resolve

### Chard

The Manse, 28 Fore Street,  
Chard, Somerset TA20 1PT

**01460 66100**

Email: [chard@bgibbsfuneralservices.co.uk](mailto:chard@bgibbsfuneralservices.co.uk)

### Ilminster

25 Silver Street, Ilminster,  
Somerset TA19 0DH

**01460 929100**

Email: [ilminster@bgibbsfuneralservices.co.uk](mailto:ilminster@bgibbsfuneralservices.co.uk)

[www.bgibbsfuneralservices.co.uk](http://www.bgibbsfuneralservices.co.uk)

Proprietor: Mr Barry J. Gibbs Dip FD NAFD



Carrie & Jason welcome you to

# HA YMAKER INN

WADEFORD, CHARD, TA20 3AP

01460 64161

**COOLER DAYS?**

**COME AND ENJOY GOOD FOOD,  
GOOD BEER & GOOD COMPANY!**

Book now for our delicious Sunday Roast

Choose 1, 2 or 3 courses

Booking essential!

## N.T.HECTOR

### ELECTRICAL SERVICES

**ALL ASPECTS OF DOMESTIC ELECTRICAL  
INSTALLATIONS AND MAINTENANCE**

- Local, reliable and efficient service
- Over 30 years experience
- Work guaranteed and insured
- Competitive prices and free estimates

CLOVERLEAF COTTAGE, COMBE ST. NICHOLAS, CHARD

Tel: 01460 64449 or 07759 146172