

CLOVERLEAF

Connecting OUR Communities



February 2021 - March 2021



Barleymow's

FARM SHOP & RESTAURANT

During this new lockdown, our Farm Shop is open as normal with number restrictions and distancing measures in place. Unfortunately our Restaurant will be closed until further notice.

Our pre-order and collect from car park service operates on Tuesdays, Wednesdays, Thursdays and Fridays only. Orders welcome on 01460 62130 or orders@barleymowsfarmshop.co.uk

Our local delivery service (free for orders over £30 or £2.50 delivery charge for under £30) is on Wednesday afternoons.

Orders for delivery must be placed by 1pm on a Tuesday.

I would like to thank our customers for their continued support and custom over the Christmas period and for their kind messages to all my staff.



The Village Shop & Post Office



Open every day

Monday to Friday - 7.30am to 6.00pm

Saturday 7.30am to 5.00pm Sunday 8.00am -1.00pm

- **Wide range of Groceries**
- **Confectionery ● Beer & Wine ● Household products**
 - **Fruit & Vegetables ● Dairy ● Coal and Logs**
 - **Newspapers & Magazines (delivered in Combe)**
- PLUS, access to full Post Office and banking facilities!**

Grocery orders taken & delivered

Call 01460 62138

SUPPORT YOUR LOCAL SHOP

Overview

It seems that each time I put an issue of Cloverleaf together, the situation in the world around me is exactly the same, and it's beginning to feel a lot like 'Groundhog Day'.

For obvious reasons there is little village news to report, but contributors have done their best to provide you with something interesting to read.

Once again, Claire Pearce puts a metaphorical arm around our winter weary shoulders and points us in the right gardening direction. Do remember to support the nursery's Spring plug plant weekend on 13th & 14th March.

For all crafty people, there's news on page 5 of a new project to keep you busy until Easter and on page 8, in addition to the report on the Village Hall, Sue Pargeter shares its history.

Our outdoor spaces - Sunday School Wood and Underway Meade - are, of course, still able to report and we are very grateful to them for all their efforts to make the Village an even more attractive place to live.

On page 12, Combe School's PFA is optimistically organising its annual 10K, 5K and Fun Runs - and is looking for both competitors and helpers on the day, while the current challenges of school life have induced Combe School's headteacher to resort to rhyme!

An update on the campaign to 'Save The Dragon' appears on page 16 and you can find out about a new Facebook Group set up by Combe Gardening Club on page 21.

Aptly, the world turned upside down is a theme of 'Bygone Days' on page 24 and we journey father back into our local area's history with John Phillips on page 26.

Although the weather has been very changeable, we have experienced some amazing sunsets, and a sunset, taken by Frank Warriner, features on the front cover. Please remember, your pictures of local and seasonal scenes are always welcome, just make sure that they are high resolution.

Finally, some information from the Office for National Statistics reminds us that March 21st 2021 is Census Day, an event which only happens every 10 years and can help to shape the future of this country.

Lets hope that the next issue of the magazine can be compiled in much happier times.

Lesley Cole

In the Garden with Claire Pearce of Combe Dingle Nursery

I regard gardeners as being some of the most optimistic people, never knowing what nature will throw at us. However, at this moment even I am struggling to get enthused. It is all too easy to say, it's too wet or too frosty. All that enthusiasm is being used to pour onto children to keep them motivated. How could I think about gardening?

Then I remind myself it gets a bit like that in January. Don't beat yourself up about all that you had planned to do by now. Let's look forward to what is around the corner. I have more seed orders to do. Compost, shrubs and alpines to order. I will look at the latest bare root perennial list and see what I can be tempted to add on last minute. I might prune apple trees today. Now I get excited about gardening. Let's enjoy this lull. February and March bring so much to do.

The shrubs and roses we pruned to reduce wind rock can then be pruned again by another third. Pruning Tea and Floribunda roses hard gives better flowers as they flower on this year's growth. I leave intact those perennials that still look good until they come back into growth. Then the old stems are cut down to ground level and tidied up. One of my favourite jobs is to cut all the leaves off the Hellebores to show off the flowers and reduce disease. I will not start sowing seeds in the greenhouse until end of February. I have learned that to rush this can be counterproductive. Better to wait until light levels have increased. The same goes for sowing outside, better to wait for the soil to have warmed a little. If weed seedlings start to grow, then so will yours. You could speed this along by warming the soil with a cloche for a few weeks before sowing and replacing the cloche.

Before we know it, the bare root fruit will be here (should have been here in November). Potatoes will be in and people will be deciding which to grow. A lot of us will be planning what to grow in the vegetable garden. What did well and which vegetables are worth growing more than others. Some of us being new to it since first lockdown and some expanded what area we had. I recommend growing something new every year and of course remain positive that we can always improve on last year!

The full selection of vegetable plug plants will be here as last year, starting mid-April. Spring plug plant weekend will be 13th and 14 March with full range for your Basket and containers. Whether we will be able to enjoy our usual tea, cake and chat, we can only be as optimistic as we are in our gardens.

Local News

Face Coverings

We wish to sincerely thank everyone on the parish who has made a donation for a face covering, and to Brian and Elsbeth in The Village Shop for continuing to let us trade our wares with the aim of helping to keep everyone safe, and raising money for Diabetes UK through donations. To the end of 2020 you have helped us to raise £2,296. Absolutely amazing! Thank you everyone

Poppy and Sue

Combe St.Nicholas and Wadeford Gala Association

Thanks very much to Daragh and Luc and all the helpers who bought, delivered and decorated the Christmas tree for The Green. Also Brandon for providing a musical accompaniment at the switch-on. All the residents of Combe Parish and those driving through the village really appreciated seeing the lovely tree in these dark days.

Gala Committee

Country Fare Catering

Although Combe Café is temporarily suspended as the Village Hall is closed, we continue to provide a choice of tasty meals every Wednesday.

Prices are now £5.50 for 1 course and £8,00 for 2 courses

Free delivery to Combe 12.30 to 1.00; Wadeford 1.00 to 1.30

Please phone or text **07450 829169** for orders and other information on the catering services we provide. And we are now providing a Sunday roast delivered hot to your door every Sunday.

Heather Margetts

Combe St Nicholas Parish Oil Co-Operative

The oil co-operative enables residents of the Parish to obtain heating oil at bulk discount prices. The minimum order will be 500 litres. There will be deliveries every two months. **Cut-off date for March will be Monday 8th.**

Please check subsequent issues of Cloverleaf or the Parish website (**www.combestnicholas.org.uk**) for the following months. For more information, please ring the number below. Please note there is no fee for membership or placing an order.

To place an order, please contact Kay on 01460 261234 or by email to motcombe@btinternet.com (stating contact details and amount).

Arboricare Ltd

The cutting edge of tree care.

- ✓ Surveys/Reports
- ✓ Planting
- ✓ Pruning
- ✓ Felling
- ✓ Pollarding
- ✓ Crown Reshaping
- ✓ Thinning
- ✓ Stumpgrinding
- ✓ Fully Insured

Approved Contractor of the Arboricultural Association

- ✓ 24 Hr Call Out
- ✓ Estate Management

Covering The South West

T: 01823 462972 M: 07831 108445

E: arboricare1988@gmail.com W: www.arboricare.co.uk

New Rendy Farm, Oake, Taunton, Somerset TA4 1BB



Loads of Logs

*Local Sustainable Firewood Logs
generated from fellings & thinnings
from the Cotley Estate.*



- Seasoned dry wood ready to burn.
- Trailer and bucket loads delivered (locally) to you.
- Bags of kindling & firewood available now.
- Active replanting programme.
- Active management of woods to promote biodiversity.

Please ring Tom on 01460 239390

Sunday School Wood

Not much to report, for obvious reasons. We did manage to have the bonfire, and although it took a while to get it going, eventually it was very successful, and completely burnt out. Also, there was not very much smoke which hopefully did not cause any problems. There was very little wind which was from a Northerly direction, so this helped.

Following the prolonged wet weather, we found that the inside of the shed was rather wet. There was a lot of leaves and twigs on the roof and in the gutter, and the down pipe was blocked. This has all been cleared, so hopefully we will now see an improvement inside the shed.

We planted some more foxgloves which were given to us by Jackie Walker, so together with those already planted, we are hoping for a good display later in the year.

In the near future, the snowdrops should be making an appearance, to be followed by the daffodils, cowslips, primroses and various others, so keep having a walk through to cheer yourselves up.

Frank Warriner (67407)

A Spring Mural for Easter

As some of you may be aware via our Village website, Janet Gage and I have started a project to make a large mural (or murals!) to go on the church railing at Easter.

We are asking and inviting other knitters, crochet makers and sewing enthusiasts to help with this ambitious parish project, which will compliment another being formulated by Rev Georgina.

Our aim is to make as many colourful flowers, leaves, butterflies, bumble bees and any other relevant items, so that we can assemble them all together and display at Easter at the beginning of April. A box for wool donations/pick up what you need and patterns will be in the church porch. Please follow Government advice and maintain Covid-19 preventative measures.

If anyone needs help or finds it difficult to access items that they need to join in, please call me or Janet Gage.

Janet: Tel: 07894 438878

Sue: Tel: 01460 394152

Sue Helliker

Bishops Funeral Services

An Independent Family Owned Business
Associated with Local Funerals
for over 130 years

**PRIVATE CHAPEL OF REST
BLACK DAIMLER CORTÈGE**

Proprietor : Deirdre E. Cargen



Tel : 01460 66909 Fax : 01460 66580

**Email : bishops.funeralservices@btconnect.com
CILLERHAYES, OLD TOWN, CHARD, SOMERSET TA20 2AS**



**Combe Wood
Computers**



Computer Spares/Repairs

Website Design & Digital Marketing



07984419755 - 0146067794



dave@combewoodcomputers.co.uk



There are no premium-rate numbers, no automated phone
queuing system and no techno-babble
We will speak in plain English and do our very best to explain
as much or as little as you wish.
Find our more visit
www.combewoodcomputers.co.uk



BOB DUNN

CHARDSTOCK JOINERY

**Windows, Stairs,
Doors, Gates
& Conservatories**

- Bespoke Joinery
- Local Professionals
- Over 30 years experience
- Supply or supply & install
- Replacement or new build
- Competitive prices
- Handle large & small projects

Tel: 07875 067092

Email: chardstockjoinery@hotmail.co.uk
www.chardstockjoinery.co.uk

CHIROPODIST/ PODIATRIST

STEPHEN WAPLINGTON

MSSCh, MBChA
HPC Registered

**EXPERT FOOTCARE
IN YOUR OWN HOME
AT NO EXTRA COST**

*For friendly and professional
treatment please call:*

01308 456724



Rapid-Print

**On the Blackdowns
Nr Chard • TA20 3HX
T: 01460 234 100
E: neil-wells@btconnect.com**

DESIGN, ARTWORK & PRINTING

**Full Colour or One
MAGAZINES • POSTERS
ADVERTISING LEAFLETS
GREETINGS CARDS
BUSINESS CARDS
COMPLIMENT SLIPS
LETTER HEADS
INVOICE/ORDER FORMS
DELIVERY NOTES
MAIL SHOTS • MENUS
JOB SHEETS / CARDS
BROCHURES • STICKERS
RING or EMAIL FOR A
QUOTE**

At Competitive Prices

**We can
Print from your Office
or PDF's Files**

Village Hall

As you will no doubt have realised, we are still closed, except for the Toenail Cutting Medical Service. With virtually no bookings income, we are very grateful to South Somerset District Council for three lockdown grants achieved with the help of Martin Wale. We hope you liked the window decoration which formed part of the village Nativity Trail. Thanks are due for this to Ian Croucher, Henry and Sam Stevenson, Dave and Jackie Cobbledick, and Georgina Vye.

As we have no other news to impart, we thought you might be interested to read about the history of the hall.



During the early 1900s, there was a strong branch of The Church of England Men's Society in this Parish. There was no fixed place for meeting and consequently in 1910 this branch of the C.S.M.S. decided to try and raise money to provide a building where the men of the Parish could meet for social activities. A fund was launched and the result was so encouraging that it was decided that a more ambitious building should be erected. The Ecclesiastical Commissioners (now The Church Commissioners) gave £100 and the site for the building on condition that the control of the new hall be entrusted to the Vicar and Churchwardens in perpetuity.

The site together with the building was conveyed to the Bath and Wells Diocesan Trustees and the Vicar and Churchwardens of Combe St Nicholas in 1912, for the following purposes:

- For celebration of Divine Service of the Church of England.
- As a Sunday School or Schools under the control of the Vicar
- As a classroom, meeting room or lecture room for members of the Church of England for Confirmation or Communicant Classes or for other religious instruction or for secular instruction under the control of the Vicar.
- As a place of meeting for clerical meetings, for district visitors, for committees and meetings of any Societies connected with the Church of England.
- For any other meetings having in view the spiritual, intellectual, moral or social wants of Parishioners and inhabitants of the village.

Additional money was raised through the proceeds from concerts and other activities. The building was started chiefly through the efforts of Mr. R. Buston and completed in 1912 at the approximate cost of £400. The branch of the C.E.M.S. at

first decided to call this building the Church Hall and then decided that the Parish Hall would give a better impression that it could be used by all men of the Parish.

For the first few years this hall was mostly used by the C.E.M.S. but in 1917 the running was taken over by the newly formed Church Council. Because other Parish interests then made use of it, a further room was added in 1926 at a cost of just under £200. From then until after the Second World War the hall remained unaltered, being without sanitation, water or furniture.

Prior to D-Day, the Hall was occupied by US troops. After the Second World War the PCC decided that the hall should be provided with a water supply, internal sanitation and cloakrooms. This work was carried out in 1952 at a cost of £900. Ten years later further improvements included a small room being built at the back of the stage at a similar cost.

A kitchen was added and a new stage erected in 1972 at a cost of over £1,000. Two years later the roof was retiled and repaired at a cost of nearly £500. The money for this was raised by Church fetes and bazaars and a donation of £300 from the former Chard Rural District Council. In 1979 Combe Gala Committee gave £650 towards refurbishing the Hall.

In 1987 the Hall was leased to a Trust, with representatives from various parish organisations made responsible for the Hall, and with four independent Trustees who hold the position of officers with responsibility for day-to-day management.

Many other improvements and modernisations have taken place in recent years including a complete refurbishment of the kitchen to comply with modern health and safety requirements, and greatly improved toilet facilities, with toilets for disabled people and gentlemen accessed from the entrance foyer and a ladies' toilet accessed from the main hall.

A number of items are displayed at the Hall, including a memorial to the men of the parish who died in the 2nd World War, a memorial commemorating the marriage of the Prince of Wales to Lady Diana Spencer donated by the Young Farmers and a tapestry showing parish scenes. The tapestry was executed by ladies of the parish and presented in April 2000.

The Village Hall Committee

Mary Brooks.

Mary would like to thank Combe and Wadeford for their kindness during her recent illness with thanks to those who have sent good wishes. A special thanks to Stella for her constant love and support.

Best wishes, Mary.

Underway Meade

With another national lockdown imposed on us all just after Christmas, taking daily exercise has once again meant that more people than ever are going for local walks and many have been including Underway Meade on their route. Within Covid rules, we will continue to do our best to maintain the Meade for everyone's enjoyment.

In the past few years the Meade has been a collection point for recycling used Xmas trees on behalf of South Somerset District Council and they have usually turned up in early January to chip them on site for us to use on the paths. As we mentioned in the last issue though, this year, owing to Covid, they were unable to offer this service, but the trustees decided we would do the chipping ourselves. The response has been tremendous, and we are still working through the heap of trees, which has been somewhat bigger than usual! Thanks to everyone who brought their trees down to the Meade and remembered to remove the decorations as requested; it is much appreciated.

If you are on Facebook you may well have seen the recent pictures of the new Willow tunnel which is being constructed in the picnic area as part of the "Wild Play in Underway" project. This, along with a mud kitchen, music wall, raised beds and a shade sail still to come, is being funded by the Blackdown Hills Sustainable Development Fund. The installation work is mainly being done by our younger volunteers, led by Sarah Packham, our newest trustee, whose ideas for these improvements for the benefit of families these were, and which are eagerly awaited.



In the last issue we launched our newly printed sets of greetings cards with beautiful pictures of the Meade drawn by local resident Peter Tucker. We are very pleased to report that nearly 100 sets of these were sold over Christmas, so thanks go to Peter, to everyone who bought sets and to Elsbeth and Brian at the Village shop for making space for them at a busy time of year. There are still some sets available if you would like some. Please contact me or Sue Pargeter direct and we'll be happy to arrange delivery.

I would like to end this report by particularly thanking those of you who support us by joining and continuing to be a "Friend of the Meade". Without your support, especially in the last year when we have had to abandon any plans to hold fund raising events such as our annual quiz, we would be struggling to maintain this well used facility. If you would like to become a Friend, forms are available at the Symes gate entrance or online on the Parish website at: <https://combestnicholas.org.uk/underway-meade/>

Lynn Osborne, Chair, Combe St. Nicholas Parochial Trust.
Tel: 01460 62015 Email: lynnosborne99@gmail.com

Flower Arranging Workshops

Happy New Year! I hope you all managed to enjoy a somewhat different 2020 Christmas. Thank goodness there is light at the end of the tunnel now.

At the time of writing, sadly my flower school is still closed due to Government restrictions. Although we didn't manage to enjoy our usual festive workshops during November and December 2020, wreaths were still made by numerous local ladies, taking inspiration from previous years. A more natural theme was popular, including using plenty of foraged foliage, feathers, nuts, a few artificial berries and of course, beautiful bows. Here are some of those fabulous designs:



2021 workshops should have started in January, but unfortunately, these have been delayed and are still very much dependent on Government restrictions. Hopefully, by the next edition of Cloverleaf, I will be able to announce a new and exciting programme for the rest of the year. In the meantime, for up-to-date details, please either visit my website, email or telephone.

All events held at Combe St Nicholas Village Hall. For more workshops and further information contact Jackie Nicholls, Ashville Design on 01460 67795 or 07906 259 683 or email ashvilledesign@outlook.com – www.ashvilledesign.co.uk – www.facebook.com/ashvilledesign

Combe St Nicholas PFA 2k Fun Run, 5k and 10k Sunday 16th May 2021 - approx. 9.30am - 12noon

We are putting plans in place to run the 10km, the 5km and 2km Fun Run this year subject to COVID restrictions at the time. We are sticking with the new date in May and hopefully will enjoy better weather. The 10km is described as a road run with undulating and hilly terrain, to provide a testing run for experienced and novice runners alike! If it seems too daunting, have a go at the 5km or take part in the 2km Fun Run! You will find more information at: **www.combe10k.org.uk**. You can register with us via runABC South, **www.runabc.co.uk**

Combe PFA has received many accolades from runners over the years, particularly about the level of stewarding. This is largely down to the assistance we receive from the local community and we would like to ask for that help again. If you are willing to enjoy a couple of hours in the fresh air for good cause, then please give me a ring on **07768 055517** or email **race_director@combe10k.org.uk**

Cloverleaf Productions

We can't perform in the Village Hall in front of an enthusiastic audience, but panto must still go on! For the last few weeks Cloverleaf members have become very familiar with modern technology and have been rehearsing a short pantomime via Zoom! Directed by Philippa Glastonvill and starring our talented youngsters, **Snow White and the Seven Dwarves** will be available for our loyal audience to view on the Cloverleaf Productions Facebook page somewhere around our normal performance time in mid February. Please watch out for posters giving full details.

Duncan Pavey *Carpenter & Joiner*

20 yrs Experience

- ❖ Specialist Installer of Kitchens, Bedrooms & Bathrooms
- ❖ Home Improvements ❖ Tiling
- ❖ Flooring ❖ Domestic Plumbing

T: 01460 63127 M: 07786 374 528

E: duncanpavey@gmail.com

'Morpeth'

Comfortable, well-furnished
holiday cottage,
centre of Combe St. Nicholas

Sleeps 6 - available all year

Enquiries/bookings **01367 710445**

Email: **rarapacker@gmail.com**

Combe St Nicholas CofE V.A. School

A Tale of (Combe) St Nicholas

(With apologies to Clement Clarke Moore)

*'Twas the week before Christmas, and all through the school
We tried to remember the two metre rule.*

*Masks at the ready and parents now banned
'Cos Covid's still travelling on through the land.*

*No Fayre to get ready. no church Christmas play.
No singing. no snow machine. no Santa on sleigh.*

*But all was not lost, it was not doom and gloom
There was the Nativity Trail and a service on Zoom!*

*And Santa still came, in a more distanced way.
And children counted 'sleeps' to that most special day.*

*And as we got ready for a new distanced term.
With messages (who knew?) that children still need to learn.*

*Classes made ready answering Boris's call
Then an eight O'clock briefing, school's closed after all!
Parents folded clean uniform away with a tear,
Whilst we switch lessons on-line - and say Happy New Year!*

Christine Maxwell

POLE RUE FARM

Holiday Cottages

2 beautiful high quality holiday cottages

in Combe St. Nicholas.

Short breaks, whole weeks or
longer periods available.

★★ Open All Year ★★

www.poleruefarm.co.uk

Nick & Leigh White

(01460) 238542

07764 968568



hpc
registered

CHIROPODIST PODIATRIST

Christian Griminger

D.Pod.M - M.Ch.S - B.A.Hons

**Professional, Experienced
& Caring**

Essex House Medical Centre

01460 65046

Tawstock Medical Centre

01460 67763

Linenyard Practice

01460 78068

Home Visits available

01460 30114

ASHCULME

TREE WORK | LANDSCAPING | FENCING | PAVING | MAINTENANCE

NPTC

Part of the City & Guilds Group

**QUALIFIED
WORKFORCE**

TREE WORK - ALL ASPECTS OF TREE WORK INCLUDING: REMOVAL, CROWNING & LIFTING

STUMP GRINDING - TOTAL REMOVAL OF ANY SIZED TREE STUMP

LANDSCAPING - ALL PROJECTS UNDERTAKEN

FENCING - NEW INSTALLATIONS OR REPAIRS TO EXISTING FENCES

TURFING - PREPARATION & LAYING OF YOUR NEW LAWN

GARDEN MAINTENANCE - HEDGE & SHRUB TRIMMING, FRUIT TREE PRUNING & MORE

EMERGENCY 24/7-

07815 146343

www.ashculmetreesurgeons.co.uk
info@ashculmetreesurgeons.co.uk

FOR A FREE QUOTE FROM YOUR FRIENDLY, RELIABLE & ESTABLISHED LOCAL FIRM:

**CONTACT
PAUL DURMAN 01823 353302**

Combe St.Nicholas Parish Council

Monthly Meetings continue to be held via Zoom. Decisions re planning applications and other issues are discussed and agreed by show of hands.

Although new lockdown restrictions are now in place again, the play area on The Lawns is open, although it is not cleaned. Please use your own sanitisers, and wash hands as soon as possible. Keep safe distances, and 1 child and 1 adult per piece of equipment.

The Combe Covid-19 Group is still in being. Hopefully all residents that needed some assistance made some good arrangements back in the summer which have continued. However, if you do need help please contact me – details below.

Dogs mess continues to be a big problem. If you own a dog you **must** be responsible for clearing up any mess left when out walking around the Parish. Reports of dogs mess being left on residents drives, verges, etc. or put into residents waste bins rather than the dogs bins or their own bin. Please take a torch if it's dark, and whatever time of day **CLEAR IT UP**. Thank you.

A request from Combe St.Nicholas School, together with 7 letters from children, have been received as they would like to create a running track around the edge of the School Field, which could be used by other residents when not in use for school children. This was agreed in principle, with any financial donation to be decided at the January meeting.

Books continue to be available to borrow from the telephone box on The Green, but if you are bringing books to the box, please, please put them in sensibly. Just recently, they have been left piled high so that no-one can read any titles, etc. Also the door lock is not being pulled up fully and the wet gets in, ruining some books and puzzles – quite a few have had to be thrown away,

The next Parish Council meetings are due on 22nd February and 22nd March, either remotely by Zoom or possibly in the Village Hall if restrictions are lifted.

Anne Hunt – Parish Clerk5th
Tel: 61296 or email combestnicholaspc@gmail.com

Keep in touch through the NEW village website
www.combestnicholas.org.uk

Save the Dragon Update

We have had an extremely productive start to the New Year. I'm delighted to say that we have achieved a significant milestone in our journey towards purchasing The Green Dragon. We have received confirmation from the FCA that our application to register 'CSN Community Pub Limited' as a Community Benefit Society (CBS) has been approved. We are now a registered CBS, which is key to securing a bank account, funding, grants and alike.

In December, the Steering Committee, along with a team of local volunteers, helped to distribute the first edition of our newsletter and share offer pledge form. We are now in the process of gathering pledges to understand how much money the CBS can raise to save The Green Dragon. A pledge in this context is an informal commitment to offer money as an investment, when needed, to help secure the freehold of our pub.

We do not require the money now, just a commitment from you for the future, most likely to be this summer. Having spoken to residents, they are a little nervous about passing over money now as times are hard which we all understand. However, the committee really needs to get a picture of the total investment from the local community so we can develop a robust business plan, giving us the best chance of succeeding.

The outline 'Share Offer' at a glance...

Type of shares Interest-bearing and withdrawable community shares

Potential return Discretionary annual interest payment (assuming profitability), initially capped at 2% above Base Rate to a maximum of 5%.

Potential tax relief Subject to HMRC rules, individuals making an eligible investment can deduct 30% of the cost of their investment from their income tax liability

Price per share £50

Investment limits Minimum £50 per person - Maximum £20,000

Share offer targets Minimum £220,000 - Maximum £400,000

Membership Open to anyone 18 and over. 4 shares (£200) are required to become a member. One member one vote, regardless of value held

Liability A Member's liability is limited to the value of their shares

Minimum term for holding shares 3 years from issue of shares

Transferring shares Non-transferable other than in certain exceptional circumstances such as death or bankruptcy of a Member; they cannot be sold to another party, only withdrawn.

Withdrawing shares Members may apply to the Society to withdraw shares. Withdrawal applications are unlikely to be accepted during the first three years. You should therefore view this as a long-term investment.

The target for our 'Share Offer' is £220,000 (minimum) and we have currently received £80,000 from 58 respondents. If we do not reach our target, we cannot access the grant funding required to make this project viable. Every pledge counts!

If you are interested in supporting this campaign, please complete a pledge form.

The forms can be found on our website **www.savethegreendragon.com** under the downloadable documents section and send to **savethegreendragoncsn@gmail.com** or drop into **The Village Shop**.

Paper copies of the pledge form will be made available at The Village Shop. Deadline for responding has been extended to **6th February 2021**.

Dave Crossman – Chairman
CSN Community Pub Limited

**FABRICS •
CURTAINS • LOOSE
COVERS • UPHOLSTERY**

CUSHIONS/SPRING REPLACEMENT/REPAIR

**Combine your ideas with our
inspiration to create the
professional effect you
desire from our own
workshop in
Chard.**

**We come to you for:
FREE QUOTATION & ADVICE/
PATTERN SELECTION, ETC.**

RED HOUSE FURNISHINGS
**CHARD-01460-
220110**

N Russell
Electrical Services

*Domestic, Commercial, Industrial
and Agricultural*

 **DOMESTIC
INSTALLER**  *Over 20 Years Experience!*

**Electrical Installation,
Maintenance and Repair**

Call now to
arrange a free Estimate

Combe St Nicholas
Tel: 01460 929619
Mob: 07552 757897

Local Handyman

25 years experience



- * Quality, professional work
- * Trustworthy and reliable
- * All types of home maintenance
- * Tiling
- * Wooden and laminate flooring
- * Kitchen and bathroom fitting
- * References available – DBS checked

**Fair prices and
excellent service guaranteed.**

Call Paul on 07894032119

Bexley View, Combe St Nicholas, TA20 3LT.

Alexander THE GRATE



01460 261156

Chimney Sweep

APICS member & HETAS registered.

Fully Insured, Certificate Issued.

Friendly, Clean, Professional Service:
Brush & Vacuum; Power Sweeping.

www.gratechimneysweep.co.uk

Email: a.gratesweep@gmail.com

1 Old Orchard, Forton, Chard, TA20 2LX

Stephen Beswetherick Opticians

People are important to us and we strive to give a personalised optical service to the local community

- Private & NHS eye examinations, including OCT scanning
- Qualified dispensing for professional frame & lens advice
- Wide frame choice including designer, value, sunglasses & safety eyewear
- Contact lens consultations & free trials
- Free eye examinations and spectacles for children
- **Up to 50% off a second pair of same prescription spectacles or sunglasses**
- Approved by Somerset Hospital Eye Service for Ocular Hypertension Monitoring, allowing patients to be monitored locally for their convenience.



WE HIGHLY RECOMMEND OUR OCT 3-D RETINAL SCANNING SERVICE

This aids the early detection of Glaucoma, Diabetes, Vitreous Detachment, Macular Degeneration and other serious eye conditions.

60 Holyrood Street, Chard, Somerset, TA20 2AL
Tel 01460 63535 **www.beswetherick-opticians.co.uk**

GORDON SUGGETT & DAUGHTER

INDUSTRIAL DOMESTIC ELECTRICAL CONTRACTOR



GORDON 07752 239083

LUCY 07885 629884

INSPECTION AND TESTING PAT TESTING

SMALL REPAIRS TO NEW REWIRES

EMERGENCY LIGHTING

DOOR ENTRY CAMERA ALARM SYSTEMS

PRE HOUSE BUYING INSPECTIONS

ESTIMATES FREE

WANTED

WANTED

WANTED

YOUR CAR OR VAN

Before you part exchange or sell your car why not give me call for a price ?

Tel Martin on 07515 896095 (01460 67526 evenings)

Email: martin@combevillagecars.co.uk

Combe Village Cars, buyers and suppliers of quality vehicles

Ex Motability cars available on request

W Young

Piano Tuning & Restoration

- Tuning
- Repairs
- Restoration
- Cabinet work
- French polishing
- Sales

From a sticky note to a full rebuild

Over 20 years' experience inc
Steinway, Bluthner, Bechstein

Tel: 01823 681605

Mob: 07881 644911

wypianos@gmail.com

www.wypianos.co.uk

Oven Spa

South Somerset's independent,
environmentally friendly, oven
cleaning service.

No fumes, no fuss, just a super shiny
oven that looks as good as new.

£55 for a single oven, £65 for a
double. Hobs & extractors from £10.

See **ovenspa.com** or call Mick
George on:

07843 99 88 96

DIRTBUSTERS
OVEN CLEANING NETWORK

Combe Dingle Plant Nursery

We invite you to come
and take a look...

**Interesting herbaceous
perennials
Vegetable plants and
Bedding**

Opening Hours:
Weekdays 9am - 4.30pm
CLOSED WEDNESDAYS
Sunday 10am - 1pm

**Combe Dingle Farm,
Street Ash**

Tel: 01460 234660

Local Handyman

25 years experience



- * Quality, professional work
- * Trustworthy and reliable
- * All types of home maintenance
- * Tiling
- * Wooden and laminate flooring
- * Kitchen and bathroom fitting
- * References available – DBS checked

**Fair prices and
excellent service guaranteed.**

Call Paul on 07894032119

Bexley View, Combe St Nicholas, TA20 3LT.

STEPHEN MELLING

Painter & Decorator

Wootton House, Underway,
Combe St Nicholas, Chard
Somerset, TA20 3NY

Tel: 01460 64353

40 YEARS EXPERIENCE IN THIS AREA

- Quick Response to Enquiries
- Detailed Estimates, Rapidly Despatched
- High Quality Workmanship and Attention to Detail
- Giving You the Confidence and Security for all your Internal and External Decorative Work

Also

**TILING - GUTTERING - TIMBER REPLACEMENT
GENERAL HOUSEHOLD MAINTENANCE**



Clubs and Societies

Combe St Nicholas Gardening Club

The Club is pleased to announce that it has set up a Facebook Group called Combe Gardening Group.

We encourage residents of Combe St. Nicholas Parish and surrounding areas to ask and answer questions on gardening matters, post photos of their gardens and plants, share gardening experiences and knowledge and raise any other matters of interest relating to gardens and gardening (whether plants, shrubs or vegetables).

No experience or education is required to join the Group - all you need is an interest in the subject. Nor do you have to be a member of Combe Gardening Club to join the Group.

We will post further information on the Combe St Nicholas Community Noticeboard on Facebook when this edition of Cloverleaf is distributed.

Rob Grimmond (261234)

Women's Fellowship

New Year's Greetings to all members, let us hope it will be a happier and healthier one for everyone.

Undoubtedly everybody has missed seeing members of their family and friends who live at a distance or are not in their bubble. Let us pray that with careful adherence to advice and the coming vaccinations we might be able to lead a slightly more normal existence by next summer.

The World Day of Prayer service this year has been written by the women of Vanuatu and for obvious reasons their HQ in London appreciate that organising services is not going to be possible for most groups. However, it is hoped that a collection for the work of the movement will still be made by the membership at some later stage. You may remember we did this a few years ago when the service was cancelled by the "beast from the east".

So with the power of collective thought we can envisage a warm day, the scent of flowers, the hum of bees (no wasps), a delicious array of cakes and a nice cup of tea on the newly mown lawn in ?? August.

Keep well and safe.

Pat Poole (62236)



ROBERT FRITH
OPTOMETRISTS

Your local independent optician

Free emergency eye care
under the Somerset
NHS ACES scheme



Advanced 3D retinal scanner now available

18 Fore Street, Chard
Incorporating Cathy Barnett Eye Care

01460 67771

4 Market Street, Crewkerne

01460 72964

28 Princes Street, Yeovil

01935 478463



B D E fabrications

Architectural Metalwork Specialists

- ❖ Staircases
- ❖ Gates & Railings
- ❖ Balustrading
- ❖ Glass & Stainless
- ❖ Historic & Antique
- ❖ Structural Steels
- ❖ General Engineering, Welding & Fabrication

Clive Woods

Tel: 07818 033040

Email: info@bdefabs.co.uk

www.bdefabrications.co.uk

**Please support our
advertisers
- they support
your magazine**

Kate Langridge

INTERIORS

Qualified needlework / art teacher
B.A. Hons.

SOFT FURNISHINGS

Curtains, Blinds,
Cushions, Bed Linen, etc.

Free consultations and advice

Tel. 01460 30682

Mob. 07805 545407

E mail

kate_langridge@hotmail.com



Yarcombe & District YFC

Our new YFC year commenced very differently to what we had all envisaged.. We welcomed a few of our existing members into new roles; Natalie Sampson our new Club Secretary, Ella Wittridge our Social Representative, Jack Retter our Treasurer and with Dan Olive our Club Chairman agreeing to stay on another year in his role. A huge thank you to the above members for their support, time, and dedication with their roles.

Due to Coronavirus, the start of our YFC year has seen most of our planned events postponed and this continues to be the case for the start of 2021. However, our members are now quite the pro's with online technology and Zoom (even with being faced with classic countryside internet connection!) and we continue to stay in contact by hosting regular activities and challenges remotely to keep the YFC enthusiasm and club spirit alive. We have had an indoor online scavenger hunts; a club bingo on zoom where 9 families all joined in, thank you to Roy Sampson for doing the calling. Also, in November Cathy Derryman kindly organised a quiz night, which 8 families joined in. Members have also participated in various competitions through social media and Devon/County YFC, such as photo entries for the best Christmas cake decoration and decorated Christmas tree..

We also held a Christmas Charity Raffle, with an impressive £910 worth of tickets being sold to the local community. Thank you to those who supported our raffle and to those who kindly donated prizes and of course to both Dan and Jack who arranged for the prizes to be delivered to the winners, socially distanced of course! The proceeds will be split equally between our charities: The Farming Community Network and Mardon House (Neurological Rehabilitation) based in Exeter. Other festive activities included Sarah Broom Floral Design kindly hosting a socially distanced wreath making workshop for a small group of our members. Thank you to Sarah for her time; members thoroughly enjoyed the workshop and made some wonderful wreaths.

Many of our members are still working from home and our farming members and members who work within the NHS have never stopped working. May we take this opportunity to say a HUGE thank you to the NHS and key workers for seeing us all through this pandemic.

If anyone would like to get involved in Young Farmers, we would love you to join in our activities and encourage you to contact our Chairman or Secretary for more information. We will keep you updated with any dates of events or fundraisers in the near future. In the meantime, we send our best wishes to you all and we hope you stay safe and well!

If anyone has any further questions please contact our Chairman Dan Olive on 07811 744714, or our Secretary Natalie Sampson on 07775 591324.

Katie Trevelyan, Press Secretary

Bygone Days

The last year, and in particularly the last few weeks, has felt as though the world has turned upside down. If anyone had said a year ago that we would be in a third lockdown, I would never have believed them. But here we are. "Other powers have taken the hand" and we are left to stand and stare. Let's hope that as the vaccine is rolled out, some form of normality will begin to return in our lives. Out of interest I checked the temperature for January 1975 mentioned in my Grandfather's piece and on the 15th the temperature hit a balmy 13.9 °C.

Lindsay Rossiter

February 1975 – What's in a name?

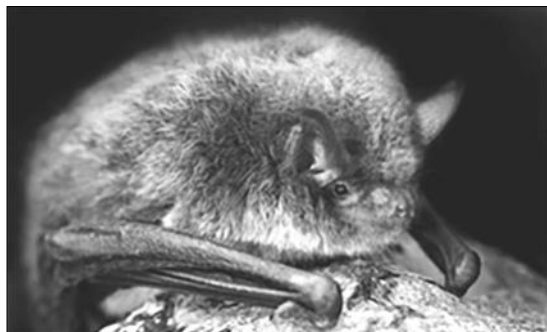
I once knew a pub which carried the delightful name of "The World Turned Upside Down". Many a good fox-hunting meet have I enjoyed from that place and I now wonder if those responsible for naming it thought it perhaps sounded appropriate then.

We are forced to accept that man's deliberate "think" has taken us far, sometimes up the road of Mr. Right and sometimes the road of Mr. Wrong, but that must be expected. When other "Powers" take a hand, one has to stand and stare.

My father in his farming life impressed upon me that one could not go against nature but could only assist it. I wonder what those who held that view would have to say today if confronted with the most peculiar nature saga that we are now experiencing.

It is February and I well know that Winter has not gone yet, but looking at the last 18 months weather, not one week have we experienced a real old-fashioned Winter. Winter woollies have not seen the light of day and in fact the warmest winter day on record was during the month of January this year. I believe this is the main cause of the extraordinary happenings in wildlife which I have noticed and which have been brought to my attention. Mr Wood's goose laid throughout the summer like a hen, instead of two clutches in February-March and then finish.





Throughout the week of Christmas, we had pipistrelle bats flying around the farm buildings each evening, and as we inspected the inmates of the covered cow yard, tiny flies were making a hurried exit to be caught by these little flying bodies outside, when in fact they should be hibernating. A

worried person phoned me to ask what she could do with two tiny baby hedgehogs she had uncovered in the compost heap: their mum should have been asleep, not breeding. On New Year's day I could have taken you to a blackberry bush which was covered in flowers, and I don't mean buds.

Yes, I think the pub had something in that name but I must tell you that not many miles from that refreshment house stood another – its name is "Who'd a Thought It".

Kenneth C Beckingham



Walkies, playdays or holidays-at-home. Forest and beach walks, plus a secure 1.5 acre paddock on site. Based in Combe St. Nicholas. References available.

Prices from just £12

lornadogzpal@gmail.com

DOGZPAL 01460 929193 or 07703 471911

Eleighwater House Retirement Home

Chard, Somerset.

Wonderful Relaxed Family Care Home.

Offering 8 single en-suite rooms.

First Class Care, Excellent Home Cooked Food

Registered with the CQC

www.eleighwaterhouse.co.uk

www.carehome.co.uk for recommendations

01460 67532

A moment in time with John Phillips

The Inclosure Acts, a series of United Kingdom Acts of Parliament which enclosed open fields and common land in the country, created legal property rights to land that was previously considered common, and denied access to ordinary folk. Between 1604 and 1914, over 5,200 individual Acts were put into place, enclosing 6.8 million acres. Here's what happened in Combe St. Nicholas.

December 20th 1815

The Green Dragon was packed with people, some excited, some anxious, some merely curious. No event of such moment had occurred since many young men from Combe had joined the Monmouth Rebellion one hundred and forty years before.

The Commissioner for Inclosure, empowered by the Combe St. Nicholas Inclosure Act of 1814 was selling by auction 232 acres of the Common land of Combe to pay for the legal, surveying and administrative costs.

Amongst the crowd was Mrs Anne Stone, who lived at Little Belcombe - a house, barn, garden, orchard and pasture she had bought for £130 in 1798. These 2 acres, no doubt to her shock and distress, were now lots 22 and 23 of the 93 lots to be sold by the Commissioner to defray his expenses.

She was not alone in her predicament, as at least 10 other people had found that their properties were built on "encroachments" (illegal enclosures) of the Commons of Combe) and they too were to be sold that day.

Luckily, Mrs Stone was able to purchase the land for just £22, with 5 shillings (25p) down-payment, a peppercorn rent for a year (if legally requested) and the £22 to be paid within a year. She paid the money owing six months later and the peppercorn was not requested.

The house passed to her daughter who had married John Hurford, yeoman of Combe St. Nicholas; later to Samuel Phillips with 7 acres of land for £370 in 1878. It was clearly a substantial house as in 1912 3 cottages in Combe were sold for £170 in total.

The records of the auction indicate that most of the other 20 or so people in the same situation as Mrs Stone managed to purchase the land n=beneath their houses – or a relative did.

The land Mrs Stone bought was described as "North West of Oxenway Lane" (this old way can still be seen in places just to the north west of the stream that runs through Belcombe on its way to the River Yarty) and "south of the proposed road". This road is now the public highway, which runs from Street Ash to Lower Beetham. Several other roads were connected to enable access to the newly enclosed commons, called Drovers -which are straight, fairly wide and relatively modern.

A poem from the 18th century reads as a protest of the Inclosure acts:

They hang the man and flog the woman
Who steals the goose from off the common
Yet let the greater villain loose
That steals the common from the goose
The law demands that we atone
When we take things we do not own
But leaves the lords and ladies fine
Who take things that are yours and mine
The poor and wretched don't escape
If they conspire the law to break
This must be so but they endure
Those who conspire to make the law
The law locks up the man or woman
Who steals the goose from off the common
And geese will still a common lack
Till they go and steal it back

A dog needs your help!

The Cinnamon Trust, a charity which offers assistance with all kinds of pet care to the vulnerable elderly and terminally ill, needs your help. We are looking for volunteers to help a resident of Wadeford and their dog who would love to go for a good walk.

If you are interested in becoming a volunteer, you can download our volunteer registration form from our website www.cinnamon.org.uk or email us at appeals@cinnamon.org.uk If you would like to have a more in-depth chat about becoming a volunteer, please call us during office hours (Monday-Friday 9am-5pm) on 01736 758 701.



- Professional, experienced upholsterer, skilled in modern and antique furniture.
- Traditional methods and materials used.
- Free advice and estimates.
- No job too small.

Transform your tired and worn out furniture by calling
Helen Rose:
Tel: 01460 62621

E & S COMPUTERS



**24A DITTON STREET,
ILMINSTER, TA19 0BQ**
(OPPOSITE TESCO PETROL STATION)

We carry out computer repairs, upgrades,
& we custom build PCs.

We sell peripherals & consumables too.

Give us a call or come & see us!

01460 259 999

WWW.ENSComputers.CO.UK

WWW.ENSComputers.COM

ENQUIRIES@ENSComputers.CO.UK



Midnight
CAKE CREATIONS

Handmade, unique cakes for any occasion

**Fun, bespoke novelty cakes and cupcakes. Also,
wedding cakes individually designed to co-ordinate
with your wedding theme and colours.**

*All cakes are made to order using free range eggs and the
finest ingredients, locally sourced where possible*

**Contact Teresa Baxter on 01460 65279 / 07706012301 or
info@midnightcakecreations.com**



R. Barrett Decorating Services

External/internal painting, decorating, wallpapering & lining

+

'Sash & Casement Window Repair & Conservation'

Traditional wood repairs, replacement cords/pulleys/windowsill
/glazing/furniture + weight adjustment & draught-proofing

www.timberwindowconservation.co.uk

£2m PL - VAT exempt Tel: 01460 259744 - Mob: 07759 177029



R. Barrett Decorating Services

Domestic Electrical & Property Services

All aspects of domestic electrical work undertaken

- Testing and inspection
- Commercial installations
- Part 'P' registered electrician
- Property maintenance
- Mechanical maintenance
- CCTV & Intruder Detection, Installation, Service & Repair
- Appliance repairs undertaken

☒ Fully Qualified ☒ Fully Insured ☒ Warranty Available

All work considered throughout the South West

For a Reliable, Honest & Efficient Service

Please Call John on:

07525 782 678

01460 54583

Or e-mail: JohnnyKay@talktalk.net



Stuart Weech Joinery

Bespoke,
made to measure
joinery items.

*Hardwood windows,
doors, gates and all other
joinery items considered.*

For a quote call:
07786061475

Email: swjoinery1@hotmail.com

Lodge House B&B

Buckland St Mary, Chard,
Somerset TA20 3TA

Tel: 01460 455455

www.lodgehousebandsomerset.co.uk

www.facebook.com/LodgeHouseBandB

Hosted by Neil and Kathy Arnold

Country Fare Catering

Caterers for
celebrations
of all types



Hot & Cold
Buffets or
sit down meals

We use fresh local ingredients

For more information call

01460 66743 or 07450 829169

Or email te.margetts19@gmail.com

F.R. Veale

*Painter
and
Decorator*



Fully insured

**Call Francis
on 01460 68423**



**Now's the time
to start preparing
your garden
and planting seeds**

AVAILABLE IN THE GARDEN CENTRE
SEED POTATOES/ONION SETS/DAHLIAS
PLUS POTS OF SPRING BULBS
NEW STOCK OF ROSES AND LOTS MORE

Chard Garden Centre

Cuttifords Door, Chard
01460 63088

*Your local Garden Centre -
that just keeps growing!*

Weather watch - local rainfall report



Period	2020 Actual	2019 Actual	10 Yr Ave 2000-2009	10 Yr Ave 2010-2019
November	122	168	131	139
December	221	201	130	140
Sub total	343	369	261	279
Jan-Oct	923	964	732	877
TOTAL	1166	1333	993	1156

All measurements in millimetres 25mm = 1" = 45 gallons/sq yard

Although there was rain every day - even if only a trace - November proved to be a lot less wet than December! Rain fell in the final month of the year on all but five days, producing a total which considerably outstripped the averages.

Tony Cole (61896)

WAYNE M LEWIS GARDEN SERVICES

01460 54034 / 07968397648



**CALL Rob on:-
07858120824**



General Home Maintenance

Painting, mowing, fixing, chiselling, clearing,
sawing, strimming, nailing, gardening, trimming,
digging, jet washing.....

Odd Jobs, Bits n Pieces, This & That.

Anything you need in your home

by Someone you can trust

Local, professional, personable service. No job too
small, great Local rates & speedy service

A J Wakely & Sons

A Private Independent Family Funeral Directors

- 24 Hour Service -



Private Chapels of Rest

www.ajwakely.com

Golden Charter
Funeral Plans



7 West Street, Ilminster Tel: 01460 52576

45 Holyrood Street, Chard Tel: 01460 67900

Please contact a member of our dedicated caring team for any advice or guidance.

Be part of the Census on March 21 2021

Why we have a census

Every 10 years the census gives a complete picture of the nation to the Office for National Statistics (the ONS). It allows us to compare different groups of people across the United Kingdom because questions are asked in a consistent manner throughout England, Wales, Scotland and Northern Ireland.

Census population estimates are vital in helping to shape the communities in which we live and work. Census statistics:

- Underpin policy making and council funding allocation from central government
- Provide information to help plan and prioritise service delivery
- Give a benchmark for estimates of population between censuses
- Provide unique detailed demographic information about local small area populations

You can find out more about the ONS at www.ons.gov.uk

Ben's Carpet and Upholstery Cleaning

Trading Standards approved.
Professional,
courteous, reliable.
Discount for OAPs.



Please call
01460 239837
or
07729 365846

benscarpetcleaning@hotmail.com

HODSON & SON

Property Maintenance And Plumbing

*Bathrooms & Kitchens
Boiler Service & Installations
Plumbing & Property Maintenance
Painting & Tiling
No Job Too Small*

**07540 426052
01460 62787**

Kathy Arnold Therapies

**REFLEXOLOGY, INDIAN HEAD
MASSAGE, AROMATHERAPY
MASSAGE, HOPI EAR CANDLES**

Now available in Buckland St. Mary
Please call Kathy on **01460 234693**
for information or appointment or visit
www.kathyarnoldtherapies.co.uk

Cloverleaf Parish Pages—Vicar's Letter

We all need a little bit of sunshine in our lives occasionally. It maybe the sun itself showing for a while and lightening our mood in the damp and darkness of winter, or it may be our hearts get stirred by the thought of doing or creating, it could be walking and seeing things on our exercise or hearing the birds singing outside. I personally love my bird feeders, watching to see who is going to which one and will it be the suet balls or the seed? The robin and the wrens, the long-tailed tits gathering as a family all at once, not so many blue tits this year, connecting with the world we are in can give all of us some pleasure and I am sure you have many stories you can share.

Sometimes opportunities present themselves to do or be something different and for some of us that means we are put into a place of changing what or how we think about a situation or a person in that space of change, Susan Helliker has come up with a lovely idea of creating a beautiful flower and insect display to brighten our lives you may want to join in. We may repeat our Nativity Trail which went so well, and thank you to everyone who took part so generously. There might also be an Easter Trail, if you are interested in taking part let me know. You don't have to have a faith or complete belief to take from the stations something that has connected with your life and your experience.

Yesterday I heard a reflection which included these words from T.S Eliot's '*The Little Gidding*' which is the last of the Four Quartets. "We shall not cease from exploration, and the end of all our exploring will be to arrive where we started and know the place for the first time."

Here is a story about a person who lived on the hillside and every evening they looked out and saw the sunshine reflected in the windows on the little cottage on the far side of the opposite hill. He loved to watch the sunset and the beauty of the reflection and so wished he lived in that little cottage with its beauty in the evenings. He decided to go and visit the cottage to see this beauty up close, so he set out and spent the evening at the cottage admiring what he saw. He stayed over as it was too late and dangerous to travel back that night. In the morning as he awoke, he was presented with a glorious sunrise reflected in the windows of the cottage on the opposite hill, it was so beautiful, then it dawned on him that it was his cottage the beauty of his own home. He had been so busy admiring the cottage at sunset across the hills that he had missed the beauty of what was right under his nose at his own home.

We shall not cease from exploration, and the end of all our exploring will be to arrive where we started and know the place for the first time. Food for thought isn't it.

Rev Georgina

Church Services across the Benefice

FEBRUARY	Combe	Wambrook	Whitestaunton	Chard
February 7th 2 nd before Lent	10.30 am Family Service	9.15am BCP Holy Communion		8.00am Holy Communion 10.00am Morning Prayer 11.00am @St Mary's
February 14th Sunday before Lent	10.30 am Holy Communion	9.15am CW Holy Communion	6.00pm BCP Evensong	8.00am Holy Communion 10.00am Holy Communion
Wednesday February 17th ASH WEDNESDAY	7.00pm Holy Communion with Ashing			9.45am Holy Communion with Ashing
February 21st 1st Sunday of Lent	10.30am Service of the Word at the Parish Church	6.00pm BCP Even- song	9.15am Holy Com- munion	8.00am Holy Communion 10.00am Holy Communion
February 28th 2 nd Sunday of Lent	10.30am Holy Communion 6.00pm BCP Evensong at the Methodist Church			8.00am Holy Communion 10.00am Holy Communion

For enquiries about Baptisms, Weddings and Funerals please contact the clergy. If you would like us to visit you or just want a chat please do not hesitate to contact me.

Rev Georgina

Church Services across the Benefice

MARCH	Combe	Wambrook	Whitestaunton	Chard
March 7th 3 rd Sunday of Lent	10.30am Family Service	9.15am BCP Holy Communion		8.00am Holy Communion 10.00am Morning Prayer
March 14th 4 th Sunday of Lent Mothering Sunday	10.30am Holy Communion	9.15am CW Holy Communion	6.00pm BCP Evensong	8.00am Holy Communion 10.00am Holy Communion
March 21st 5 th Sunday of Lent	10.30am Service at the Parish Church	6.00pm BCP Sung Even-song	9.15am CW Holy Communion	8.00am Holy Communion 10.00am Morning orship
March 28th Passiontide begins PALM SUNDAY	10.30am Liturgy of the Palms Service at Combe			8.00am Holy Communion 10.00am Liturgy of the Palms

BCP Communion:

Normally on 3rd Wednesday of the month at 10.00am at Combe

At this moment in time all of our Services in the Church have been suspended as we all work together to help keep each other safe. So these Sunday Services are provisional and it may be that none of them will actually take place in person, best to be prepared though. If you would like to receive our weekly link to recorded worship then please ask and we will add you to the email list.

Rev Georgina

Cloverleaf Parishes Information

Clergy contact details:

Rector: Rev'd Ann Kember

The Vicarage, Forton Road, Chard TA20 2HJ

Tel: 01460 351521 Email: annkember58@gmail.com

Associate Rev'd Georgina Vye,

Vicar: The Vicarage, 57 Caraway Close, Chard, TA20 1HP

01460 66159 or 07950 989916 Email: g.vye@btinternet.com

Cloverleaf Churchwardens

St Nicholas, Combe: Bobbie Boud (67901), Penny Croucher (64098)

St Mary's, Wambrook: Graeme Pidgeon (07807 284738)

Visit the Wambrook website www.wambrookparishchurch.com

St Andrew's, Whitestaunton: Jane Harris (239113), John Barron (63716)

COMBE ST NICHOLAS METHODIST CHURCH

Services: No services until further notice

Minister: Rev Anna Flindell (01460 261766)

Steward: Arnold Coleman (64892)

Copy date for April/May issue of Cloverleaf

*Items for Cloverleaf should be e-mailed to **csnparishmag@btinternet.com** or delivered to **The Village Shop & Post Office, Combe** NO LATER THAN 12noon on **TUESDAY 16th March**. Please note: long articles may have to be edited and inclusion cannot always be guaranteed.*

Distributors: April/May Magazines will be in Combe Church ready for collection on Friday pm 26th March.

If you would like to advertise please call **01460 61896** or email **csnparishmag@btinternet.com** for availability of space and rates.

The inclusion of advertisements in this magazine is not a recommendation or endorsement by the magazine of either the advertisers or their goods or services. Readers must satisfy themselves as to the ability of the advertiser to provide the required standard of product or service.

A.G.M.

Axminster Garden Machinery

• SALES • SERVICE • SPARES •
Independent Specialists



BOOK
YOUR WINTER
SERVICE NOW

FACTORY APPOINTED AUTHORISED DEALERS
OF ALL POWER EQUIPMENT WE SELL

Quality, Value and Service



Unit 1A Weycroft Avenue, Millway Rise, Axminster, EX13 5HU

Tel: 01297 631186

www.axminstergardenmachinery.co.uk

B. GIBBS FUNERAL SERVICES LTD.

An independent family business providing
24 hours professional care, personalised planning,
qualified advice and guidance for peace of mind



- Pre-paid Funeral Plans
- Home Visiting Service
- Private Chapel Of Rest

NAFD
Resolve

Chard

The Manse, 28 Fore Street,
Chard, Somerset TA20 1PT

01460 66100

Email: chard@bgibbsfuneralservices.co.uk

Ilminster

25 Silver Street, Ilminster,
Somerset TA19 0DH

01460 929100

Email: ilminster@bgibbsfuneralservices.co.uk

www.bgibbsfuneralservices.co.uk

Proprietor: Mr Barry J. Gibbs Dip FD NAFD

Carrie & Jason welcome you to
HAYMAKER INN

WADEFORD, CHARD, TA20 3AP

01460 64161

WE WILL RE-OPEN!

**As soon as Government regulations allow,
we will be open again.**

**Keep up to date by following
us on Facebook**



N.T.HECTOR

ELECTRICAL SERVICES

**ALL ASPECTS OF DOMESTIC ELECTRICAL
INSTALLATIONS AND MAINTENANCE**

- Local, reliable and efficient service
- Over 30 years experience
- Work guaranteed and insured
- Competitive prices and free estimates

CLOVERLEAF COTTAGE, COMBE ST. NICHOLAS, CHARD

Tel: 01460 64449 or 07759 146172