

CLOVERLEAF

Connecting OUR Communities



October - November 2020



Our Farm Shop and Restaurant are both open as normal with number restrictions and distancing measures in place. Table bookings are welcome on 01460 62130.

We are still running our pre-order and collect from car park service, however this will operate on Tuesdays, Wednesdays, Thursdays and Fridays only. Orders welcome on 01460 62130 or orders@barleymowsfarmshop.co.uk

Our delivery service (free for orders over £30 or £5.00 delivery charge for under £30) to Combe St. Nicholas, Chard and Tatworth is on Wednesday afternoons.

Orders for delivery must be placed by 1pm on a Tuesday.

I would like to thank our customers for their continued support and custom over the past weeks and for their kind messages to all my staff.



The Village Shop & Post Office



Open every day

Monday to Friday - 7.30am to 6.00pm

Saturday 7.30am to 5.00pm Sunday 8.00am -1.00pm

- **Wide range of Groceries**
 - **Confectionery ● Beer & Wine ● Household products**
 - **Fruit & Vegetables ● Dairy ● Coal and Logs**
 - **Newspapers & Magazines (delivered in Combe)**
- PLUS, access to full Post Office and banking facilities!**

Grocery orders taken & delivered

Call 01460 62138

SUPPORT YOUR LOCAL SHOP

Overview

In the two months that have passed since I compiled the last edition of Cloverleaf life seems to have been standing still. However, there are signs of some semblance of normality returning...

Our schools have re-opened along with many more shops, sport is being played and the choir is even allowed to sing in the church! Fortunately this area has not been blighted by a 'second spike', Perhaps we should be grateful that our rural location and general obedience means that we are all still here and healthy.

Without the regular reports from local organisations, clubs and societies, there is a lack of information to pass on, so I am grateful to all who have rallied round and sent me interesting items to fill the magazine.

There's good news that the Village Hall is to re-open in the next few weeks. The Shoebox Appeal tells us that Christmas is not far away! The need for support is even greater this year, so please do see if you can help.

How much does a local pub mean to a village like Combe St. Nicholas? Later on in the magazine, Dave Crossman shares his thoughts on the closure of The Green Dragon and would like to hear your views.

And have you seen elephants, tigers or leopards in your garden? That's a question raised and answered by Rob Grimmond, who gives us a fascinating insight into the wonderful world of moths.

Chard Museum's article on maps encourages us to discover more about the origins of where we live, either by visiting the Museum or through an interactive website. If you are interested in local history, why not try it out?

There's also a piece about the what3words app which, in this rural locality, could be a life-saver as just 3 unique words can pinpoint your exact location (Hermes drivers, please take note).

This is the time when I have to sell the advertising for the coming year. The entire cost of Cloverleaf is covered by advertising revenue, so that you receive your copy free of charge. However, this will only continue to work if we have enough advertisers. 2020 has been a difficult year for many companies and tradespeople, so please do give your support those who ads appear in the printed magazine and the online edition on the village website.

Finally, thank you to Lorraine Wells for our seasonal front cover picture of a beautiful Comma butterfly resting amid the juicy blackberries.

Lesley Cole

Editor

In the Garden with Claire Pearce of Combe Dingle Nursery

This year started with seemingly never-ending rain, then late frosts, and another hot dry summer; August brought unseasonable strong winds and rain and then back into beautiful September sunshine. Plants all react differently each year to the varying conditions thrown at them. Some bask in the sunny dry weather. Others sulk hopefully to have a second flush when the weather cools. Having taken a battering in August many come into their own in September, giving us lots of late colour to enjoy.

Continue to regularly remove faded heads and tired foliage. At this time of year it is usually more for cosmetic reasons. Some though, such as Cosmos, Dahlias and late flowering perennials, Heleniums and Salvias respond well and will produce more flowers for it. Do not just pull the flower head off. Cut back to a healthy leaf joint, try to think that the stem needs to be strong enough to support the next flower.

There is lots to do now in readiness for next year. I for one have got masses I would like to achieve. I will make the most of the children being back at school, for who knows how long it will last.

There are bulbs and winter bedding to plant. Now is a wonderful time to plant new herbaceous perennials and to lift and divide established ones. Always water in well and they will be settled and off to a good start for next year.

Cuttings can be taken and seeds collected from annuals and perennials to increase stock for next year. You could also dig up small self-seeded perennials, move them to where you want them or pot up, grow on and plant out in the spring.

A lot of plants will have a second flush of flowers if cut back earlier in the year. My wisteria seems to have had a second flush of growth. I took this opportunity to give it a good detangle and extend its growth across the pergola and wall.

October is when I like to plant Broad beans, spring cabbage, onion sets and garlic. I have always enjoyed the vegetable garden. The work involved, the joy of picking your own, knowing what has gone into the soil and sharing stories of success and failure. Then of course there is the taste. This was emphasised by the look on someone's face when they tasted a freshly picked tomato still warm from the sun.

Local News

Combe St. Nicholas Village Hall

It's all change for the Village Hall! We're delighted to report that we now have a new Chairman, Alan Verrinder; a new Vice Chairman, Yvonne Froelich; and a new representative for the Gardening Club, Wendy Shorey. Welcome all!

With Covid-19 placing ever more specific demands on us, particularly the requirements for rigorous hiring records, more extensive and regular cleaning, and lack of need for many of the usual caretaking tasks, we have redesignated the caretaking roles.

Jackie Cobbledick as Facilities Manager will be taking the lead on the condition of the hall, including cleaning, health and safety and access, while Richard Roderigo as Maintenance Associate will retain some responsibilities, including the heating and external noticeboard, and Dave Cobbledick as Maintenance Support will look after internal maintenance and minor repairs. Our Treasurer, Ian Croucher, will handle the bookings.

Confused by the Covid-19 6 person ruling? So are we! But we have had official confirmation that as a venue which is complying with government guidance, we are classed as "Covid secure", so we may allow up to our (revised) maximum of 23 people to use the hall at a time. Not surprisingly, however, most of our regular hirers have decided that it's too soon to resume use, influenced mainly by the requirement for masks to be worn, the limit on numbers of attenders, and the need for cleaning to be carried out by group members before and after use.

However, Jackie Nicholls plans to resume her flower arranging classes from 19th October, which will be a good test of our arrangements, with an easily controlled event. The lack of income is a concern, but fortunately we have a government grant which is tiding us over for the time being. We will soon be open for business again, so if you do want to make a booking, please contact Ian on 01460 64098, and he will send you the necessary hire details.

The Village Hall Committee

**Keep in touch with the NEW Combe village website -
visit www.combestnicholas.org.uk**

CHIROPODIST/ PODIATRIST

STEPHEN WAPLINGTON

MSSCh, MBChA

HPC Registered

**EXPERT FOOTCARE
IN YOUR OWN HOME
AT NO EXTRA COST**

*For friendly and professional
treatment please call:*

01308 456724



WAYNE M LEWIS GARDEN MAINTENANCE



**Pond cleans
Turfing
Fencing
Patios
Grass cutting
Free estimates**

**Phone
07968 397648**

Duncan Pavey *Carpenter & Joiner*

20 yrs Experience

- ❖ Specialist Installer of Kitchens,
Bedrooms & Bathrooms
- ❖ Home Improvements ❖ Tiling
- ❖ Flooring ❖ Domestic Plumbing

T: 01460 63127 M: 07786 374 528

E: duncanpavey@gmail.com

PILATES CLASSES

**Group Classes &
Individual Sessions
available.**

**Please contact Annabel at ARK PILATES
for more information:**

**www.arkpilates.co.uk
annabelrkent@gmail.com
07470079498**

HANDYMAN SERVICES

MULTI SKILLED

NO JOB TO SMALL!

**30 YEARS
EXPERIENCE**

FREE ESTIMATES

**CALL DENIS
07483-890716**

WANTED

WANTED

WANTED

YOUR CAR OR VAN

Before you part exchange or sell your car why not give me call for a price ?

Tel Martin on 07515 896095 (01460 67526 evenings)

Email: martin@combevillagecars.co.uk

Combe Village Cars, buyers and suppliers of quality vehicles

Ex Motability cars available on request

'Morpeth'

Comfortable, well-furnished
holiday cottage,
centre of Combe St. Nicholas

Sleeps 6 - available all year

Enquiries/bookings **01367 710445**

Email: **rarapacker@gmail.com**

Maid on Time

Personal, professional,
domestic cleaning service

Chard, Ilminster and
surrounding area



For further details please contact

Maidontime@hotmail.com

07852 820731

GORDON SUGGETT & DAUGHTER

INDUSTRIAL DOMESTIC ELECTRICAL CONTRACTOR



GORDON

07752 239083

LUCY

07885 629884

INSPECTION AND TESTING PAT TESTING

SMALL REPAIRS TO NEW REWIRES

EMERGENCY LIGHTING

DOOR ENTRY CAMERA ALARM SYSTEMS

PRE HOUSE BUYING INSPECTIONS

ESTIMATES FREE

R. Barrett Decorating Services

External/internal painting, decorating, wallpapering & lining

+

'Sash & Casement Window Repair & Conservation'

Traditional wood repairs, replacement cords/pulleys/windowsill
/glazing/furniture + weight adjustment & draught-proofing

www.timberwindowconservation.co.uk

£2m PL - VAT exempt Tel: 01460 259744 - Mob: 07759 177029

 R. Barrett Decorating Services



Wadeford Charity Book Club

We've had several enquiries from people as to when the next book sale might be but, as you will probably realise, we are rather dependent on those running CSN Village Hall and that has been closed since lockdown was introduced. We have made enquiries with the Hall committee quite recently and they are keen to get things up and running as soon as possible, but they do have a lot of hoops to jump through before events like ours can re-commence. Once we get the thumbs up we will try and get something organised as quickly as possible. Please keep a look out for our posters on the usual notice boards and on the local Facebook site. Hope to see you all soon.

Moir, Bob, June and Frank

Combe St Nicholas Parish Oil Co-Operative

The oil co-operative enables residents of the Parish to obtain heating oil at bulk discount prices. The minimum order will be 500 litres. There will be deliveries every two months.

Cut-off date for November will be Monday 9th.

Please check subsequent issues of Cloverleaf or the Parish website (**www.combestnicholas.org.uk**) for the following months. For more information, please ring the number below. Please note there is no fee for membership or placing an order.

To place an order, please contact Kay on 01460 261234 or by email to motcombe@btinternet.com (stating contact details and amount).



BARN REARED

FRESH TURKEYS



LOCALLY PRODUCED - READY FOR CHRISTMAS

For further details or to place an order call Michael & Di Hine

01460 234810

Combe St. Nicholas Parish Council

The July and August Parish Council meetings continue to be held remotely, via Zoom, and Council matters were all dealt with by information/comments shared by that medium. 2 new Councillors have been co-opted on to the Parish Council – Ed Cockburn and Tony Glasper and they will be welcomed at the September meeting.

The lime tree on The Green will be trimmed around the bottom to enable easier walking.

Thanks were extended to both Sue Pargeter and Ian Croucher for all their work in connection with the possible re-opening of the Village Hall. The amount of paperwork etc. to be read through and completed was a mine-field. Thanks also to all those involved with the deep cleaning.

During the Lock-down era of this Covid-19 pandemic, many people in the Parish volunteered to help in so many ways. Sincere thanks are extended to everyone who have helped, or volunteered to help even if in the end it wasn't needed. Everyone has been most grateful.

Please keep vigilant to hopefully keep another state of lock-down at bay.

The play area on The Lawns is now open, although it is not cleaned. Please use your own sanitisers, and wash hands as soon as possible. Keep safe distances,

There has been a lot of publicity of dogs mess around the Parish. **Please be considerate** to others, and ensure this is cleared up. It is part of being a dog owner. With winter coming on please take a torch out with you so it can still be cleared up.

The next Parish Council meetings are due on **Monday 2th October** and **23rd November** either remotely by Zoom or in the Village Hall if restrictions are lifted.

**Anne Hunt – Parish Clerk (61296) or email combestnicholaspc@gmail.com
website : www.combestnicholas.org.uk**

ADVERTISEMENT UPDATE

**Please note that the
Accidental Vegan Café in Honiton
has closed.**

E & S COMPUTERS



24A DITTON STREET,
ILMINSTER, TA19 0BQ

(OPPOSITE TESCO PETROL STATION)

We carry out computer repairs, upgrades,
& we custom build PCs.

We sell peripherals & consumables too.

Give us a call or come & see us!

01460 259 999

WWW.ENSComputers.CO.UK

WWW.ENSComputers.COM

ENQUIRIES@ENSComputers.CO.UK

Combe Dingle Plant Nursery

We invite you to come
and take a look...

**Interesting herbaceous
perennials**

**Vegetable plants and
Bedding**

**Combe Dingle Farm,
Street Ash**

Tel: 01460 234660

**CALL Rob on:-
07858120824**



General Home Maintenance

Painting, mowing, fixing, chiselling, clearing,
sawing, strimming, nailing, gardening, trimming,
digging, jet washing.....

Odd Jobs, Bits n Pieces, This & That.

***Anything you need in your home
by Someone you can trust***

**Local, professional, personable service. No job too
small, great Local rates & speedy service**

CANINE MUSCLE DYNAMICS

THERAPEUTIC MASSAGE



Results you can see
and your dog can feel

Therapeutic Canine Massage may help if
your dog has any of the following:

- Lameness/limping/stiffness or suffering with Arthritis/Hip Dysplasia
- Signs of Ageing/difficulty going up/down stairs/jumping in or out of the car/Reluctant on walks
- Performance issues - e.g: Agility, Flyball, field Trials, working dogs
- Twitching or quivering of the skin
- Gait/Postural irregularities

Call **Melloney Cooke** on **07900 902 461**
www.caninemuscledynamics.com

STEPHEN MELLING

Painter & Decorator

WOOTTON HOUSE, UNDERWAY,
COMBE ST NICHOLAS, CHARD
SOMERSET, TA20 3NY

Tel: 01460 64353

30 YEARS EXPERIENCE IN THIS AREA

- Quick Response to Enquiries
- Detailed Estimates, Rapidly Despatched
- High Quality Workmanship and Attention to Detail
- Giving You the Confidence and Security for all your Internal and External Decorative Work

ALSO

**TILING - GUTTERING - TIMBER REPLACEMENT
GENERAL HOUSEHOLD MAINTENANCE**



Domestic Electrical & Property Services

All aspects of domestic electrical work undertaken

- Testing and inspection
- Commercial installations
- Part 'P' registered electrician
- Property maintenance
- Mechanical maintenance
- CCTV & Intruder Detection, Installation, Service & Repair
- Appliance repairs undertaken

☒ Fully Qualified ☒ Fully Insured ☒ Warranty Available

All work considered throughout the South West

For a Reliable, Honest & Efficient Service

Please Call John on:

07525 782 678

01460 54583

Or e-mail: JohnnyKay@talktalk.net

ELECSA
Part of the ECA Group

**Part P
Approved Contractor**

www.elecsa.co.uk

Combe St Nicholas Gardening Club

As you will all be aware, the Village Hall has been closed due to the COVID-19 epidemic but will be re-opening subject to compliance with COVID-19 guidelines.

After careful consideration the Gardening Club committee has decided not to hold any meetings until at least the Spring of next year. We feel that the special hiring conditions and the vulnerability of some of our members make it impractical for us to hold meetings for the time being.

Our Rules require us to hold our AGM in October so we hope members will not mind it being carried over till next year. This year's membership will be rolled over to 2021. We will monitor developments and let you all know when we feel it is safe to resume meetings.

Rob Grimmond (261234)

Cloverleaf Productions

Normally, at this time of year, auditions have taken place, parts have been assigned and rehearsals are well underway for the next pantomime. But this time is NOT normal.

Unfortunately, with all the constraints of COVID-19 guidelines, rules and regulations, we have had no option but to cancel the Cloverleaf Pantomime for 2021.

The restrictions on the size of group meetings would make rehearsals almost impossible; social distancing might mean 3-4 people only on our small stage and it simply wouldn't be Panto if there were no rousing songs!

Let us all hope that the current situation normalises very soon, so that we can return to the stage in time to bring you a stunning Summer Show!

Leo Brooks

Mary and family would like to thank all those who sent sympathy cards, letters and messages following Leo's passing, in particular all those from Combe St.Nicholas Local Ladies for their friendship and support at this difficult time.

Sunday School Wood

We finally had to strim Brian's patch, the flowers being well past their best. The strimmings were left on the ground for a while to allow flower seed to drop out, hopefully to grow next year. However, to be on the safe side, we have already bought some new seed. We will probably have to strim again, and treat the area with weedkiller before rotovating next year in readiness for re-sowing. However, we believe the results this year make it worth the effort.

Towards the other end of the plot, near the entry path from the Church yard we have decided that there was possibly sufficient yellow rattle to not need more seed for next year, but only time will tell. At least we will know whether we need more towards the end of next year.

The foxgloves we planted last year gave good results, so we have already planted more for next year, and intend adding to these. If we can establish these, maybe they will self seed, but being bi-annuals, it is a bit dubious as to what will happen.

We began to wonder if the slow worms had gone into isolation, but recently we have begun to see them in the compost heaps, so they have not deserted us. We also saw one grass snake.



The British Grass Snake is nonvenomous

The seats and picnic table have been treated with Danish oil wood preservative, to try to keep them in reasonable condition, although the seats are becoming the worse for wear, particularly the Audrey Miller seat, and we do wonder how long they will last. Alan has done a grand job repairing them over the years, but there is only so much he can do.

Frank Warriner (67407)

Whitestaunton News

Whitestaunton Harvest Supper

Due to the present COVID-19 restrictions, the Harvest Supper scheduled for October 9th has been cancelled. However, the event is planned to go ahead next year on October 8th at Buckland St Mary Village Hall.

Eleighwater House Retirement Home

Chard, Somerset.

Wonderful Relaxed Family Care Home.

Offering 8 single en-suite rooms.

First Class Care, Excellent Home Cooked Food

Registered with the CQC

www.eleighwaterhouse.co.uk

www.carehome.co.uk for recommendations

01460 67532

**Please support our
advertisers - they
support your
magazine**

D. ELWOOD

Landscaping & Garden Maintenance

- Paving ●Fencing ●Decking
- Walling ●Turfing
- Grass Cutting ●Hedge Cutting

For all enquiries please contact

07849 790519

**FABRICS •
CURTAINS • LOOSE
COVERS • UPHOLSTERY**

**Combine your ideas with our
inspiration to create the
professional effect you
desire from our own
workshop in
Chard.**

**We come to you for:
FREE QUOTATION & ADVICE/
PATTERN SELECTION, ETC.**

**RED HOUSE FURNISHINGS
CHARD-01460-
220110**

N Russell Electrical Services

*Domestic, Commercial, Industrial
and Agricultural*



Over 20 Years Experience!

**Electrical Installation,
Maintenance and Repair**

Call now to
arrange a free Estimate

Combe St Nicholas

Tel: 01460 929619

Mob: 07552 757897

ASHCULME

TREE WORK | LANDSCAPING | FENCING | PAVING | MAINTENANCE

NPTC

Part of the City & Guilds Group

QUALIFIED
WORKFORCE

TREE WORK - ALL ASPECTS OF TREE WORK INCLUDING: REMOVAL, CROWNING & LIFTING

STUMP GRINDING - TOTAL REMOVAL OF ANY SIZED TREE STUMP

LANDSCAPING - ALL PROJECTS UNDERTAKEN

FENCING - NEW INSTALLATIONS OR REPAIRS TO EXISTING FENCES

TURFING - PREPARATION & LAYING OF YOUR NEW LAWN

GARDEN MAINTENANCE - HEDGE & SHRUB TRIMMING, FRUIT TREE PRUNING & MORE

EMERGENCY 24/7-

07815 146343

www.ashculmetreesurgeons.co.uk

info@ashculmetreesurgeons.co.uk

FOR A FREE QUOTE FROM YOUR FRIENDLY, RELIABLE & ESTABLISHED LOCAL FIRM:

CONTACT
PAUL DURMAN

01823 353302

POLE RUE FARM

Holiday Cottages

2 beautiful high quality holiday cottages

in Combe St. Nicholas.

Short breaks, whole weeks or

longer periods available.

★★ Open All Year ★★

www.poleruefarm.co.uk

Nick & Leigh White

(01460) 238542

07764 968568



hpc
registered

CHIROPODIST PODIATRIST

Christian Grimminger

D.Pod.M - M.Ch.S - B.A.Hons

**Professional, Experienced
& Caring**

Essex House Medical Centre

01460 65046

Tawstock Medical Centre

01460 67763

Linenyard Practice

01460 78068

Home Visits available

01460 30114

Underway Meade

It is hard to believe that we are already into autumn as, despite the restrictions imposed on us all this year due to Covid 19, the time still seems to have flown by!

We put out a call recently for volunteers to come along to help us spread some wood chippings on the grass paths that often get muddy once the weather gets wet. We were amazed and delighted when on the morning of 5th September 22 people turned up with wheelbarrows, shovels and rakes and set to. In an hour and a half, the huge chippings heap was no more, and the paths are now all beautifully springy! Thank you to everyone who helped us. It is a job that can often take the few regular volunteers several weeks to complete and it just shows what can be achieved with a willing group of people.



The next volunteer event will be a pond management day to reduce the amount of reed coverage (messy but good fun!). We are expecting this to be in early November, subject to the Covid-19 rules at the time, so please watch out for posters and messages on the "Underway Meade" and "Combe St Nicholas Noticeboard" Facebook pages for details.

In a winter edition of Cloverleaf we announced that we had been pleased to have received funding from the County Council's "Improving Lives Grant

Scheme" to enhance the picnic area with new fencing, a new picnic table with wheelchair access and some cherry trees. For obvious reasons we have been delayed in completing this work but those who visit the Meade regularly will have seen that there is now a new "wheelchair friendly" table in the picnic area and we have also made good progress on installing the replacement fencing round the picnic area. The 440 palings to complete the job finally arrived on the 8th September, so we hope to be able to finish this job by November. The cherry trees will be planted in due course. We would like to thank our County Councillor Amanda Broom and the Parish Council for their support with the original application.

You may recall that we welcomed Sarah Packham as a new Trustee earlier in the year and she is keen to make the picnic area more child friendly. She put out a Facebook call on our behalf for comments on her ideas and we were pleased to see that they were well supported. Armed with this evidence and the promise of help to carry out any work, we decided to make a bid to the Blackdown Hills AONB Challenge Fund for Green Recovery and I am pleased to announce that we were successful. So watch out for lots of exciting new developments soon, including a willow tunnel, mud kitchen, music wall, raised planters, information points and more!

Lastly, I know many people enjoy seeing the sheep on the mound, especially as they like visitors and often come down to the bottom of the hill to see what is going on. We had expected the four we are currently hosting to stay until the New Year but the 3 ewes are all expecting (unplanned!) lambs this year so will probably have to go back to their owners early for the big event! We will miss them as they have been doing a great job of keeping the grass under control in an area we can't mow due to the steepness and unevenness of the land.

Lynn Osborne, Chair, Combe St. Nicholas Parochial Trust.
Tel: 01460 62015 Email: lynnosborne99@gmail.com

**Keep in touch through the
NEW village website
www.combestnicholas.org.uk**

A J Wakely & Sons

A Private Independent Family Funeral Directors
- 24 Hour Service -



Private Chapels of Rest

www.ajwakely.com

Golden Charter
Funeral Plans



7 West Street, Ilminster Tel: 01460 52576
45 Holyrood Street, Chard Tel: 01460 67900

Please contact a member of our dedicated caring team for any advice or guidance.

Country Fare Catering

Caterers for
celebrations
of all types



Hot & Cold
Buffets or
sit down meals

We use fresh local ingredients
For more information call
Heather on 01460 66743 or
07980 921171

Lodge House B&B

Buckland St Mary, Chard,
Somerset TA20 3TA

Tel: 01460 455455

www.lodgehousebandbsomerset.co.uk

www.facebook.com/LodgeHouseBandB

Hosted by Neil and Kathy Arnold



FERNE
ANIMAL SANCTUARY

VISIT EXPLORE RELAX

ENJOY AN UNFORGETTABLE DAY OUT IN
THE BEAUTIFUL SOMERSET COUNTRYSIDE

OPEN 7 DAYS A WEEK

(except Christmas Day and New Years Day)

Visit our website for our seasonal opening times.

www.ferneanimalsanctuary.org

Chard, Somerset TA20 3DH. Tel: 01460 65214

Local Handyman

25 years experience



- * Quality, professional work
- * Trustworthy and reliable
- * All types of home maintenance
- * Tiling
- * Wooden and laminate flooring
- * Kitchen and bathroom fitting
- * References available – DBS checked

**Fair prices and
excellent service guaranteed.**

Call Paul on 07894032119

Bexley View, Combe St Nicholas, TA20 3LT.

Stuart Weech Joinery

Bespoke,
made to measure
joinery items.

*Hardwood windows,
doors, gates and all other
joinery items considered.*

For a quote call:
07786061475

Email: swjoinery1@hotmail.com



Combe Wood Computers



Computer Spares/Repairs

Website Design & Digital Marketing



07984419755 - 0146067794



dave@combewoodcomputers.co.uk



There are no premium-rate numbers, no automated phone
queuing system and no techno-babble
We will speak in plain English and do our very best to explain
as much or as little as you wish.
Find our more visit
www.combewoodcomputers.co.uk



Combe St Nicholas Parish Party on the 5th September 2020.

Well it rained the day before and it rained the day after, but despite some big black clouds casually wandering over, the Saturday of the CSN Parish Party stayed fine and dry, phew what a relief for all concerned!

The day started early with the Grandfather Jem busy setting up his tent over in the corner of the school field. The pizza puppet man got his brilliant woodfired pizza oven going near the entrance then setting about hand making all the dough and fillings, that left Brandon, our village's brilliant young singer, and his family erecting their gazebo and sound system smack bang between the two of them.

By 1 o'clock in the afternoon we had fulfilled our risk assessment detailed plans: flags and signs, tables and chairs, hand sanitizers and all paperwork set up at both entranceways, clipboards manned and ready to take details of all who came for the NHS Track & Trace requirements and we were ready, so let the fun commence!

The next 3 hours went by in what seemed like only a brief moment of time. Brandon started it all off with his talented singing voice, using pre-recorded backing music, all very clever and sounding great. The yummy pizzas were soon being hungrily consumed by all and proved very popular all afternoon. The



Brandon Smith opening the entertainment

puppet shows for the little ones went down a storm, Grandfather Jem's stories attracted a good crowd of listeners and the young ones had a great time running around the field with their various ball and frisbee games, whilst the older ones amongst us sat and listened to the lovely singing from Brandon and guest singer Fleur, who at only 13 has the most amazing voice - so clean, clear and crisp, a real treat for all there.

Before we realised, it was 4 o'clock and people started drifting away home, all saying they had really enjoyed a brilliant family afternoon of traditional talented performers and would we be doing it next year? Hope so!

Many thanks for all your kind donations and helping us support live rural entertainment.

Helen, Ian & Penny.

Blythswood Care 'Shoebox Appeal' 2020

Once again the *TA postal area* will be supporting Bythswood Care with shoeboxes for children, women, men and elderly women.

Blythswood are also suggesting that as shoeboxes are hard to find this year, contents can be placed into a drawstring bag (fabric not plastic) instead.

This annual shoebox project enables caring individuals, families, schools, churches, businesses and other organisations to fill ordinary shoeboxes with small toys, toiletries, school equipment, kitchen utensils, household tools, hats and scarves and other useful gifts for vulnerable children **and adults** in Eastern Europe caught in the midst of wars, natural disasters and extreme poverty.

If you have anything of the above to **donate towards a shoebox** or if you have **empty shoeboxes** waiting to be covered with Christmas paper, please do not hesitate to contact me. (Thank you to those people who have already given me empty boxes.) If you feel you can fill a whole box, I also have **leaflets** available giving full details of 'How to pack your shoebox'. I shall also put '**ready-wrapped shoeboxes**' into the Parish Church as I have done in the past.

If you are **unable to put together a whole shoebox** but would like to help, then I should be very grateful for any **fillers** which you know will be useful to be used in a shoebox, as I shall be running my own mini warehouse at home completing shoeboxes before taking them to the main warehouse.

Donations of empty shoeboxes, wrapping paper and wool for knitting would be most welcome. Thank you so much for your support.

Pamela Hodge

Shoebox District TA postal area (65149)

williamhh@hotmail.com

**Please support
our advertisers
- they support
your magazine**



B D E fabrications

Architectural Metalwork Specialists

- ❖ Staircases
- ❖ Balustrading
- ❖ Historic & Antique
- ❖ General Engineering, Welding & Fabrication
- ❖ Gates & Railings
- ❖ Glass & Stainless
- ❖ Structural Steels

Clive Woods

Tel: 07818 033040

Email: info@bdefabs.co.uk

www.bdefabrications.co.uk

Fencing & Garden Maintenance

- GARDEN FENCING
- STOCK FENCING
- GRASS CUTTING & STRIMMING
- HEDGE TRIMMING
- HARD LANDSCAPING
- PATIO & DECKING CLEANING
- MINI DIGGER HIRE WITH DRIVER

TEL: CHRIS 07949 365850

EMAIL:

CHRISNORTHFENCING@HOTMAIL.COM

Farrier Service

Roland Thompson Dip.WCF
Registered Farrier

Reliable, professional, modern and friendly service

07989 351509

roland@nagsandnails.co.uk

Shoeing, trimming and remedial work
www.nagsandnails.co.uk



ALSO MAKING WINE RACKS FROM HORSESHOES

Arboricare Ltd

The cutting edge of tree care.

- ✓ Surveys/Reports
- ✓ Pollarding
- ✓ Planting
- ✓ Crown Reshaping
- ✓ Pruning
- ✓ Thinning
- ✓ Felling
- ✓ Stumpgrinding
- ✓ Fully Insured

Approved Contractor of the Arboricultural Association

- ✓ 24 Hr Call Out
- ✓ Estate Management

Covering The South West

T: 01823 462972 M: 07831 108445

E: arboricare1988@gmail.com W: www.arboricare.co.uk

New Rendy Farm, Oake, Taunton, Somerset TA4 1BB



Bishops Funeral Services

An Independent Family Owned Business
Associated with Local Funerals
for over 130 years

**PRIVATE CHAPEL OF REST
BLACK DAIMLER CORTÈGE**

Proprietor : Deirdre E. Cargen



Tel : 01460 66909 Fax : 01460 66580

Email : bishops.funeralservices@btconnect.com

CILLERHAYES, OLD TOWN, CHARD, SOMERSET TA20 2AS

F.R. Veale

*Painter
and
Decorator*



Fully insured

**Call Francis
on 01460 68423**

CHARDSTOCK JOINERY

Quality Purpose Made Joinery

**Windows, Stairs,
Doors, Gates
& Conservatories**

- Bespoke Joinery
- Local Professionals
- Over 30 years experience
- Supply or supply & install
- Replacement or new build
- Competitive prices
- Handle large & small projects

Tel: 07875 067092

**E-mail : chardstockjoinery@hotmail.co.uk
www.chardstockjoinery.co.uk**

B. GIBBS FUNERAL SERVICES LTD.

An independent family business providing
24 hours professional care, personalised planning,
qualified advice and guidance for peace of mind



- Pre-paid Funeral Plans
- Home Visiting Service
- Private Chapel Of Rest



Chard

The Manse, 28 Fore Street,
Chard, Somerset TA20 1PT

01460 66100

Email: chard@bgibbsfuneralservices.co.uk

Ilminster

25 Silver Street, Ilminster,
Somerset TA19 0DH

01460 929100

Email: ilminster@bgibbsfuneralservices.co.uk

www.bgibbsfuneralservices.co.uk

Proprietor: Mr Barry J. Gibbs Dip FD NAFD



**VINTAGE TEA PARTY
CATERING FOR
SPECIAL OCCASIONS**

WWW.VIDASVINTAGETEAPARTY.CO.UK

01460 351728

Kate Langridge
INTERIORS

Qualified needlework / art teacher
B.A. Hons.

SOFT FURNISHINGS

Curtains, Blinds,
Cushions, Bed Linen, etc.

Free consultations and advice

Tel. 01460 30682

Mob. 07805 545407

E mail

kate.Langridge@hotmail.com

Loads of Logs

Local Sustainable Firewood Logs generated from fellings and thinnings from the Cotley Estate.

- Seasoned dry wood ready to burn.
- Trailer and bucket loads delivered (locally) to you.
- Bags of kindling & firewood available now.
- Active replanting programme.
- Active management of woods to promote biodiversity



Please ring Tom on 01460 239390



Walkies, playdays or holidays-at-home. Forest and beach walks, plus a secure 1.5 acre paddock on site. Based in Combe St. Nicholas. References available.

Prices from just £12

lornadogzpal@gmail.com

DOGZPAL 01460 929193 or 07703 471911

W Young

Piano Tuning & Restoration

- Tuning
- Repairs
- Restoration
- Cabinet work
- French polishing
- Sales

From a sticky note to a full rebuild

Over 20 years' experience inc
Steinway, Bluthner, Bechstein

Tel: 01823 681605

Mob: 07881 644911

wypianos@gmail.com

www.wypianos.co.uk

Oven Spa

Oven Cleaning

**South Somerset's independent,
environmentally friendly, oven
cleaning service**

No fumes, no fuss, just a super shiny
oven that looks like new.

£50 for a single oven, £60 for a double
Hobs and extractors from £10

See ovenspa.com for more details
or call Mick George on

07843 99 88 96

DIRTBUSTERS
OVEN CLEANING NETWORK

The Green Dragon - What Next?

On 12th September 2020, The Green Dragon, Combe St Nicholas's only pub, closed its doors. Many residents have said that closure of the pub will be incredibly damaging to the local community. One solution is to create a community pub – owned by and run for the local community. Over 120 groups across the country have done this and many of these pubs are now thriving again. To progress the idea of a community pub it is essential we understand the strength of support and the type of services that you would value if a pub were to reopen in Combe St Nicholas under community ownership.

What is a community pub?

A community pub is owned and controlled by a large number of people from within the community – typically around 200 people. A community pub has its roots within the community, and binds people together in a way that few other things are able to do. It is a way of securing and preserving something precious; a place where people can share their joys and sorrows, celebrate and commiserate, or just pass the time of day.

Benefits of a community pub...

- can have an asset lock safeguarding the building for the long term
- provide a better range of services that go well beyond their functional remit of selling food and drink
- provide better quality services as they have a culture that has customer feedback built in.
- stimulate community activity, and help to reduce social isolation
- are a more resilient form of business as a result of all of the above points, the community model has a stronger chance of success.

We would like to seek your views about the kind of pub you would like The Green Dragon to be. Please complete the questionnaire (delivered to Combe, Wadeford & Whitestaunton areas with your Cloverleaf) and return in a sealed envelope to the **Combe Village Shop by no later than 2nd October 2020**. The questionnaire is also available to complete online. Please visit our website for the link.

How to get involved and stay informed

A dedicated Facebook group, called "Save the Dragon" and a website **www.savethegreendragon.com** have been set up to keep interested parties up to date with progress.

If you would like to help in any way in the setting up of the community pub, please send an email to **savethegreendragoncsn@gmail.com**

Dave Crossman



Yarcombe & District YFC

The last real Young Farmers event was at the start of March 6-8th, where several members went to Newquay for the annual South West Area, where we were joined by other Young Farmers clubs across the South West. A great time was had by all, but little did we all know this would be the last big event we would all go to for a long while (some may have wished they drank more and spent more time away from home)!

Our lives are slowly getting back to normal with pubs opening and being able to meet in small groups with our friends' 'bubble'!

Meetings are still being held over zoom. Many members are still working from home on computers looking out into the countryside, rather than a company office and our farmers & NHS workers have never stopped working. A massive thank you to the NHS staff for keeping our hospitals going and treating patients in the coronavirus pandemic. Thanks also to our farmers for keeping going, ensuring that we had food on our plates!

We will keep you updated with any dates of events and new members meetings in the near future. In the meantime, stay safe! If anyone has any further questions please contact Chairman Dan Olive on 07811744714, or Secretary Laura Dare on 07411837605.

Natalie Sampson, Press Secretary

What are your three words ?

Some of you may have recently seen TV ads for **what3words** and wondered why you should know about it.

Street addresses don't always point to precise locations especially in rural areas, so **what3words** has given every 3m square in the world a unique three word address. The words are randomly attributed to each square and will always stay the same, so you can find and share any location with just 3 words!

Just over 80% of the emergency services in the UK now use **what3words**, so it's a good idea to download the **what3words** app on your phone in case you need to call 999.

You can find a full list of those services that accept **what3words** at **www.what3words.com/news/emergency/three-words-for-a-faster-emergency-response**. You could also use the app to report incidents with organisations like National Grid, Network Rail and the Environmental Agency:

Totally free to download and use, **what3words** is available on iOS or Android.

Stephen Beswetherick Opticians

People are important to us and we strive to give a personalised optical service to the local community



- Private & **NHS** eye examinations, including OCT scanning
- Qualified dispensing for professional frame & lens advice
- Wide frame choice including designer, value, sunglasses & safety eyewear
- Contact lens consultations & free trials
- Free eye examinations and spectacles for children
- **Up to 50% off a second pair of same prescription spectacles or sunglasses**
- Approved by Somerset Hospital Eye Service for Ocular Hypertension Monitoring, allowing patients to be monitored locally for their convenience.

WE HIGHLY RECOMMEND OUR OCT 3-D RETINAL SCANNING SERVICE

This aids the early detection of Glaucoma, Diabetes, Vitreous Detachment, Macular Degeneration and other serious eye conditions.

60 Holyrood Street, Chard, Somerset, TA20 2AL
Tel 01460 63535 www.beswetherick-opticians.co.uk

**Moving Home or Leaving the UK
Need your Possessions Moving
or Keeping in Storage**

**Don't take a chance -
choose Chudley!**



Contact Chudley International
01460 55655 • info@chudleyinternational.com

Rapid-Print

On the Blackdowns
Nr Chard • TA20 3HX
T: 01460 234 100
E: neil-wells@btconnect.com

DESIGN, ARTWORK & PRINTING

Full Colour or One
MAGAZINES • POSTERS
ADVERTISING LEAFLETS
GREETINGS CARDS
BUSINESS CARDS
COMPLIMENT SLIPS
LETTER HEADS
INVOICE/ORDER FORMS
DELIVERY NOTES
MAIL SHOTS • MENUS
JOB SHEETS / CARDS
BROCHURES • STICKERS
RING or EMAIL FOR A
QUOTE

At Competitive Prices

We can
Print from your Office
or PDF's Files

Helen Rose Upholstery

- Professional, experienced upholsterer, skilled in modern and antique furniture.
- Traditional methods and materials used.
- Free advice and estimates.
- No job too small.

Transform your tired and worn out furniture by calling

Helen Rose:

Tel: 01460 62621

Ben's Carpet and Upholstery Cleaning

Trading Standards approved.
Professional,
courteous, reliable.
Discount for OAPs.



Please call

01460 239837

or

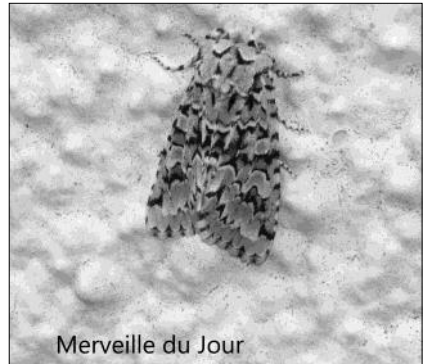
07729 365846

benscarpetcleaning@hotmail.com

Have you seen an Elephant, Leopard or Tiger in your garden of late?

Mmm, has he lost the plot, you may ask? Not yet, because I'm talking about moths, in this case Elephant Hawk-moth, Leopard Moth and Jersey Tiger. I've been lucky enough to record them all this year;

In an earlier edition of Cloverleaf I touched on the subject of moths, the Cinderella of the natural world. Sadly, many people consider them pests, but there's just a few, tiny, pale, moths that may attack clothing and carpets. In a YouGov Poll for Butterfly Conservation 75% had negative views on moths – pests or destroyers of clothes! 17% thought them ugly. 12% thought them scary. If you're still not convinced, please bear with me and read on. They are not all drab; some are colourful or beautifully marked.



Moths are underappreciated, important, pollinators; they are a food source for beetles, spiders, frogs & toads, birds and bats and a host for parasitic wasps and flies. Abundance of larger moths has alarmingly declined by 40% in the south of the UK, impacting on other species.

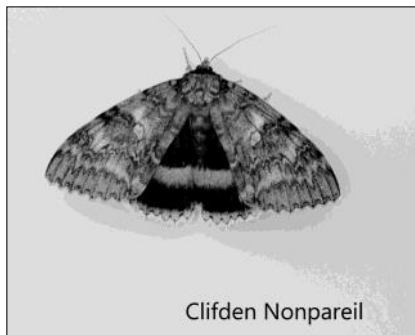
About 300 million years ago, moths evolved. About 98 million years ago, some moths started to fly by day and feed on emerging flowers; this was the birth of butterflies. Moths differ from butterflies in that most don't have clubbed (bulbous) antennae, whereas butterflies generally do.



Some moths fly by day, others by night. Flowers with easily accessible nectar provide an all year food supply. Some moths fly in winter, feeding on Ivy flowers. Anti-predator strategies include camouflage, shape, bright colours (distasteful), 'squeaks' and general appearance (e.g. some resemble bird

droppings). As an example, the Buff-tip looks like a broken twig. Caterpillars feed on the leaves and roots of native plants and grasses.

Moths have some amazing names, for example, Maiden's Blush, Peach Blossom, the Drinker, the Conformist, True Lover's Knot, Feathered Footman,



The Uncertain, The Confused and Setaceous Hebrew Character. There are carpets, kittens, pugs, tigers, footmen, quakers, daggers and darts. A recent new species for me is the Clifden Nonpareil (literally "incomparable Clifden"), which is spreading in southern England and is almost the size of a small teacup! It has black underwings with a light blue band.

A few of us in the Parish trap and record moths, using a light trap, and send our records to a County Recorder. This way, the status of species can be monitored over time, locally and nationally. If you don't want to trap, an outside light may attract them.

What can you do to help moths (and other wildlife)?

- Be untidy - moths need fallen leaves, old stems & other plant debris to hide overwinter
- Go organic
- Leave some long grass & self-sown weeds for suitable breeding habitat
- Keep garden green – concrete & gravel don't help wildlife
- Leave hedgerows for a few years if possible

Hopefully we will be able to hold a public event next year at which we can show people the beauty of moths. If we can persuade just a few people to get involved, it will all be worthwhile.

If you would like any further information on moths, or help with identifying anything of interest you've found, you are welcome to contact me on **01460 261234** or email **motcombe@btinternet.com**.

Rob Grimmond

Kathy Arnold Therapies
REFLEXOLOGY, INDIAN HEAD
MASSAGE, AROMATHERAPY
MASSAGE, HOPI EAR CANDLES

Now available in Buckland St. Mary
Please call Kathy on 01460 234693
for information or appointment or visit
www.kathyarnoldtherapies.co.uk

HODSON & SON

Property Maintenance And Plumbing

Bathrooms & Kitchens
Boiler Service & Installations
Plumbing & Property Maintenance
Painting & Tiling
No Job Too Small

07540 426052
01460 62787

Alexander
THE GRATE



01460 261156

Chimney Sweep

APICS member & HETAS registered.
Fully Insured, Certificate Issued.
Friendly, Clean, Professional Service:
Brush & Vacuum; Power Sweeping.

www.gratechimneysweep.co.uk
Email: a.gratesweep@gmail.com
1 Old Orchard, Forton, Chard, TA20 2LX

The Accidental
Vegan Café



HAS CLOSED



ROBERT FRITH
O P T O M E T R I S T S

Your local independent optician

**Free emergency eye care
under the Somerset
NHS ACES scheme**



Advanced 3D retinal scanner now available

18 Fore Street, Chard

Incorporating Cathy Barnett Eye Care

01460 67771

4 Market Street, Crewkerne

01460 72964

28 Princes Street, Yeovil

01935 478463



Midnight
CAKE CREATIONS

Handmade, unique cakes for any occasion

Fun, bespoke novelty cakes and cupcakes. Also,
wedding cakes individually designed to co-ordinate
with your wedding theme and colours.

*All cakes are made to order using free range eggs and the
finest ingredients, locally sourced where possible*

Contact Teresa Baxter on 01460 65279 / 07706012301 or
info@midnightcakecreations.com

Sharon's Mobile Hairdressing Services

(formerly of Brookside Hairdressing Salon)

(Combe St. Nicholas)

Working Days: Tuesday, Wednesday, Thursday

TELEPHONE: SHARON 07948 684330



Flower Arranging Workshops

Following all Covid 19 rules and guidelines, I'm delighted to announce that flower arranging workshops at the village hall are slowly starting again. Yes, there will be changes to keep us all safe. This will include fewer students on a workshop, a lot more cleaning, windows flung open and social distancing. But... we'll continue to have plenty of creative fun and laughs - just in a slightly different way for a while.

Here's what's coming up:

Ravishing Roses

Monday 19th October 2020

10am-12.30pm £22

An elegant long and low design you can easily adapt for every season of the year, including Christmas. This arrangement made using the roses we all love will look fabulous anywhere in your home - and will definitely be the envy of your friends. It's gorgeous!

Christmas workshop dates for your diary

(these may be subject to change)

Festive programme to be announced shortly:

Saturday 7th November

Monday 23rd November

Saturday 5th December

Monday 7th December

Saturday 12th December

Monday 14th December

During these strange times, I am sure you will understand that all these dates are now dependent on several factors. But fingers crossed, I'm hoping at least some of them will be able to take place.

All events held at Combe St Nicholas Village Hall. For more workshops and further information contact Jackie Nicholls, Ashville Design on 01460 67795 or 07906 259 683 or email ashvilledesign@outlook.com – www.ashvilledesign.co.uk – www.facebook.com/ashvilledesign



Chard Museum



Welcome's You to the Wonderful World of Maps.

Maps not only show you the pathways of today but can also be portals to the past. Chard Museum has almost 400 maps, most of which are of Chard, Ilminster, and our surrounding areas.

These have been donated by local people over the years and additions to the collection are frequent. Some are copies, some are original, and most are Ordnance Survey in origin.

The earliest maps of Chard in the Museum's collection date from 1780s and the majority date from the 1830s to the 1990s showing the development and changes to the local area over that period.

The wider collection includes geological survey maps, maps highlighting the infrastructure including road changes, old railway routes and canals. There is also a selection of archaeological maps that have been included as a separate topic. These identify Hillforts, Roman villas, settlements, and roads such as the Fosse Way.

You can come into the Museum and research or look at the maps. All you have to do is email us at **info@chardmuseum.co.uk**, give us the topic you want to research and some dates that might suit you to visit. We will then try and link you with a member of our excellent research team.

If you prefer to research independently or with the family then you can also use Know Your Place (www.kypwest.org.uk) which can help you discover things about Chard or your local village that you couldn't have imagined.

So, go to www.kypwest.org.uk or put in a search for "Know your place Somerset". Search for Chard, Somerset, or the name of your village. Spend a little time getting to know the site, there are clear instructions provided.

Here are 4 questions to help you to learn about the site. We think they will give you lots to think about. Find where you live on the 2017 map. Now scroll across the discover what was there on the older map

Now look at the street names. Are they the same as today?

Now zoom out. What do you notice about the town that is different to how it is today?

Where were these buildings on the 1800s map? – the Museum, the Guildhall, the Chard School or the Rugby Club?

Please share what you discover with the Museum.

JON DAGGER

Cooker / Kitchen

Appliance Engineer

Based in Hemyock

Over 35 years experience with
many manufacturers
inc. Rangemaster, Hotpoint,
Canon plus most others.

Repairs to Range type or
built in or freestanding cookers,
washing machines, dishwashers

07725 852322



The Potting Shed Café IS OPEN!

NOW'S THE TIME TO PLAN AHEAD!

• PLANT AUTUMN BULBS •
FOR A GREAT SHOW IN THE SPRING

• FEED YOUR LAWN •
WITH AUTUMN FEED & MOSS KILLER

• LATE SEASON SEED POTATOES •
PLANT NOW AND HARVEST FOR
CHRISTMAS!

Call in and look around

*Your friendly Local Garden Centre –
that just keeps growing*

Chard Garden Centre

Cuttiford's Door, Chard

01460 63088

Weather watch – local rainfall report



Period	2020 Actual	2019 Actual	10 Yr Ave 2000-2009	10 Yr Ave 2010-2019
July	34	25	89	63
August	114	125	72	103
Sub total	148	150	161	166
Jan-June	569	505	527	517
TOTAL	717	655	688	683

All measurements in millimetres 25mm = 1" = 45 gallons/sq yard

July had very few days of significant rainfall and the total for the month was well below the local averages. By comparison, August was far more unsettled, with only a small number of days when no rain fell!

Tony Cole (61896)

Cloverleaf Parish Pages

FROM THE PARISH REGISTERS

We give thanks for the life of:

Joan Linstead

Combe St Nicholas

HARVEST FESTIVAL

Combe, Wambrook, and Whitestaunton will sadly be unable to hold their Harvest Suppers this year, however, the Harvest Festivals will still be held in somewhat different circumstances than normal:

Combe on Oct 4th at 10.30 will be accepting donations of clothing to be sent to aid refugees in Syria and Greece, (we will put up a list of items in the Church porch).

Wambrook on Oct 11th at 6.00pm if we are more than 20 we will need to be outside for safety so please come wearing appropriate clothing and with a folding chair and brolly if it looks like rain.

Whitestaunton on Oct 11th at 6.30pm again are more than 20 we will need to be outside for safety so please come wearing appropriate clothing and with a folding chair and brolly if it looks like rain. The Auction will as usual take place after the service.

Recycling

Just a reminder that if you don't have a car and would like to continue with recycling your plastics, the bin is available in Church just inside the door and is emptied regularly. We would ask you to gel your hands before placing items in the bin to help keep us all safe. Also we are still collecting crisp packets!

Rev Georgina

For enquiries about Baptisms, Weddings and Funerals please contact the clergy. If you would like us to visit you or just want a chat please do not hesitate to contact me.

Rev Georgina

Rector's Letter

On my last visit to the Diocesan offices in Wells, just before lockdown, I picked up a series of leaflets entitled 'Discover Somerset Churches'. I was disappointed to see that none of our local churches were featured, indeed, only Chard appeared, but only as a tiny dot in one corner of a map.

We are all justly proud of our church buildings in this benefice and each of them have their own unique features and qualities. I am neither a historian or an architect, but I really enjoy mooching around the churches and finding things I hadn't seen before. Lately, I was introduced to the Green Man on a pillar in Combe church and I have been studying the various angels that appear in the windows in St Mary's in Chard.

Sometimes, when I ask people (particularly those who do not attend services) why the church building is important to them, they will say that it represents centuries of tradition. Well, yes, they do, but tradition is an interesting word. Tradition has not actually stood still and in terms of the practices and uses of our churches it has varied greatly over the centuries. We might be very surprised to find out how our churches were used in medieval times, which included holding local markets within church buildings, and of course, the Reformation saw all our churches change hugely, both in their fabric and forms of worship.

The English Civil War saw many churches desecrated and precious artefacts destroyed. Moving through to the Victorian age, many churches were again changed and re-ordered, and new stained-glass windows were installed in hundreds of churches.

Church buildings have never really been left alone as they have been continually repaired and patched up and today many churches are being re-ordered again to make them fit for use in the 21st century.

For me, however, the real joy of our church buildings is not actually the architecture but the people. I often imagine the hundreds and hundreds of people who have come into our churches over the centuries to worship, sing, pray and hear God's word being read. I think of all those who have been married, or baptised or buried in our churches and that seems to me to be the most precious thing. If only the walls could talk, I am sure they would have many stories to tell.

I love reading names on tombstones and on wall plaques and wondering what these people were like and what sort of lives they lead. I can only guess, but I do know that they at some time, stood, sat or kneeled in the same building and

that God met them there, just as I know he meets me now.

Whatever reason we may have for valuing our church buildings, we must now begin to face some truths about them. With dwindling and ageing congregations in most of our churches and with the cost of upkeep rising, we cannot delay much longer in making some difficult decisions. The Church of England has a huge task on its hands in keeping all its churches open and if we care about our local churches then we are going to have to take responsibility for this ourselves.

We need to start a conversation now about how we might keep our church buildings open for the next generations. I believe that this cannot be done without involvement from the whole local community. The cost of keeping our church buildings going cannot ultimately be borne by those who attend worship as they are too few.

I know of some churches that have started 'Friends of..' groups that subscribe and raise money for the upkeep of a local church. They are usually made up of members of the local community who do not attend church but are concerned that the church building should be preserved.

Other churches are re-ordering themselves so that they can be more widely used by the community and others are opening more and more for local events including concerts, talks and drama performances.

We had a wonderful example lately of a very generous donation being given towards the cost of repairing the roof at Ham by a lady who often saw it as she drove past on the A303. Church buildings have that effect. They draw people to them, perhaps as a reminder that there is a different way of doing things, a different, more contemplative way to live. They connect us with the past and offer us hope for the future. They point to something greater than ourselves.

Let us never take our churches for granted and if we really care about them, let us begin now to find ways of ensuring their future.

With every blessing

Ann

Confirmation

We would like to offer Confirmation Classes commencing in January. If this is something you would like to know more about or join in with, then please contact either Rev Ann or Rev Georgina.

Church Services across the Benefice

OCTOBER	Combe	Wambrook	Whitestaunton	Chard
October 4th Trinity 17	10.30am Family Service with Parish and Methodist Church Combined Harvest Festival	9.15am BCP Holy Communion		8.00am Holy Communion 10.00am Harvest Festival
October 11th Trinity 18	10.30am Holy Communion CW	6.00pm HARVEST FESTIVAL	6.30pm HARVEST FESTIVAL	8.00 am Holy Communion 10.00am Holy Communion followed by APCM
October 18th Trinity 19 St Lukes	10.30am Service of the Word with Healing at the Parish Church	6.00pm BCP Evensong	9.15am Holy Communion CW	8.00am Holy Communion 10.00 am Service with Healing
October 25th Last Sunday of Trinity BIBLE SUNDAY	10.30am Benefice Service for Bible Sunday at Combe	10.30am Benefice Service for Bible Sunday at Combe	10.30am Benefice Service for Bible Sunday at Combe	8.00am Holy Communion 10.30am Benefice Service for Bible Sunday at Combe

**BCP Communion:
on the third Wednesday of each month at Combe at 10.00am**

Church Services across the Benefice

NOVEMBER	Combe	Wambrook	Whitestaunton	Chard
November 1st 4 th before Advent All Saints	10.30am Family Service	9.15am BCP Holy Communion		8.00am HC 10.00am Morning Worship
November 8th Third before Advent Remembrance Day	10.50 am Remembrance Day Service	10.55am Remembrance Day Service	6.00pm BCP Evensong	8.00am HC 10.50am Remembrance Day Service
November 15th Second before Advent	10.30am Together with Methodists at the Parish Church	6.00pm BCP Sung Evensong	9.15am CW Holy Communion	8.00am HC 10.00am Service of the Word
November 22nd Sunday next before Advent Christ the King	10.30am Holy Communion			8.00am HC 10.00am HC
November 29th ADVENT SUNDAY	Time and place of Benefice Service to be advised	Time and place of Benefice Service to be advised	Patronal Festival of St Andrews Time and place of Benefice Service to be advised	8.00am HC Time and place of Benefice Service to be advised

Wambrook Flowers & Cleaners

Flowers

Oct 4	Jacqueline Cosby
Oct 11 & 18	Ally Eames
Oct 25 & Nov 1	Sue Eames
Nov 8 & 15	Penny Luther
Nov 22 & 29	Elspeth Hunt

Cleaning

Elspeth Hunt
Marjie Dorling
Lesley Atkinson
Wendy Fyffe
Lesley Atkinson

Cloverleaf Parishes Information

Clergy contact details:

Rector: Rev'd Ann Kember

The Vicarage, Forton Road, Chard TA20 2HJ

Tel: 01460 351521 Email: annkember58@gmail.com

Associate Rev'd Georgina Vye,

Vicar: The Vicarage, 57 Caraway Close, Chard, TA20 1HP

01460 66159 or 07950 989916 Email: g.vye@btinternet.com

Cloverleaf Churchwardens

St Nicholas, Combe: Bobbie Boud (67901), Penny Croucher (64098)

St Mary's, Wambrook: Graeme Pidgeon (07807 284738)

Visit the Wambrook website www.wambrookparishchurch.com

St Andrew's, Whitestaunton: Robert Kemp (65404)

COMBE ST NICHOLAS METHODIST CHURCH

Services: No services until further notice

Minister: Rev Anna Flindell (01460 261766)

Steward: Arnold Coleman (64892)

Copy date for December/January issue of Cloverleaf

*Items for Cloverleaf should be e-mailed to **csnparishmag@btinternet.com** or delivered to **The Village Shop & Post Office, Combe** NO LATER THAN 12noon on **TUESDAY 10th November**. Please note: long articles may have to be edited and inclusion cannot always be guaranteed.*

Distributors: December/January Magazines will be in Combe Church ready for collection on Friday pm 20th November.

If you would like to advertise please call **01460 61896** or email **csnparishmag@btinternet.com** for availability of space and rates.

The inclusion of advertisements in this magazine is not a recommendation or endorsement by the magazine of either the advertisers or their goods or services. Readers must satisfy themselves as to the ability of the advertiser to provide the required standard of product or service

A.G.M.

Axminster Garden Machinery

• SALES • SERVICE • SPARES •
Independent Specialists



BOOK
YOUR WINTER
SERVICE NOW

FACTORY APPOINTED AUTHORISED DEALERS
OF ALL POWER EQUIPMENT WE SELL

Quality, Value and Service



Unit 1A Weycroft Avenue, Millway Rise, Axminster, EX13 5HU
Tel: 01297 631186

www.axminstergardenmachinery.co.uk



Mindline
Somerset
01823 276 892

Need someone to talk to?

Feeling isolated?



It makes a real difference talking to someone
about how you feel.

Talk to us in total confidence.

www.mindline.org

01823 276892

8pm-11pm

Tue, Wed, Fri, Sat & Sun

COMPUTER--SOLUTIONS

REPAIRS

UPGRADES

VIRUS AND SPYWARE REMOVAL

DATA RECOVERY

SYSTEM BUILDS TO YOUR SPECS

NETWORK POINTS INSTALLED

24 HOUR SERVICE

WE COME TO YOU

NO FIX NO FEE

FOR FRIENDLY HELP AND ADVICE

CALL DEN

07483-890716

Carrie & Jason welcome you to
HAYMAKER INN

WADEFORD, CHARD, TA20 3AP

01460 64161

WE ARE OPEN!

Enjoy a wide range of food and drinks, all served following Government regulations for your comfort and peace of mind.

Christmas menu now available
Bookings taken for parties of up to 6

N.T.HECTOR

ELECTRICAL SERVICES

**ALL ASPECTS OF DOMESTIC ELECTRICAL
INSTALLATIONS AND MAINTENANCE**

- Local, reliable and efficient service
- Over 30 years experience
- Work guaranteed and insured
- Competitive prices and free estimates

CLOVERLEAF COTTAGE, COMBE ST. NICHOLAS, CHARD

Tel: 01460 64449 or 07759 146172